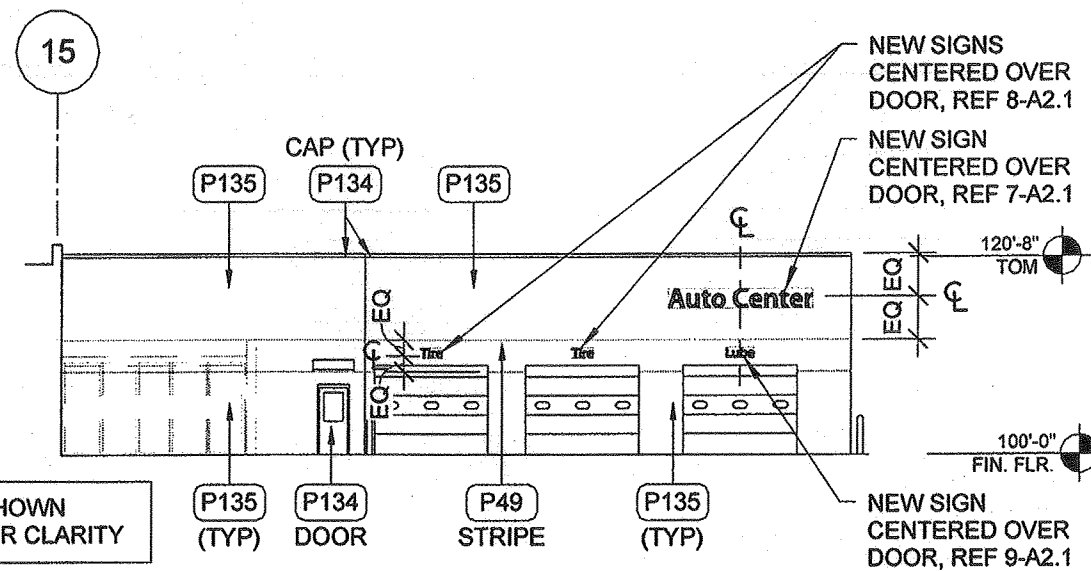
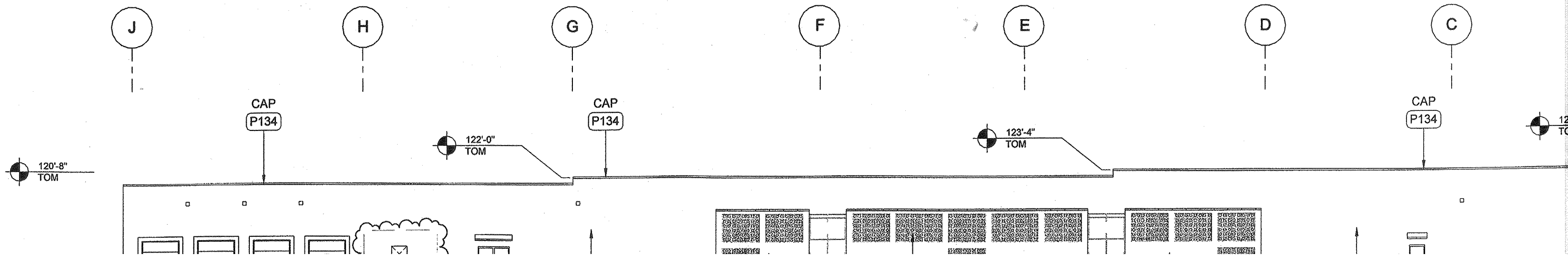


**7** SIDE ELEVATION  
1" = 20'-0"



FENCING SHOWN  
DASHED FOR CLARITY

**6** AUTO CENTER ELEVATION  
1" = 20'-0"



**5**

1. R  
2. S  
3. N  
4. N  
5. N  
6. R  
N  
O  
C  
W  
M

P5	OSHA Standard "Safety Yellow"
P21	SW# 4081 "Safety Red"
P36	SW# 6989 "Domino"
P49	SW# 7019 "Gauntlet Gray"
P76U	Medium Walmart Blue (URETHANE)
P81	SW# 6258 "Tricorn Black"
P126U	SW# 6885 "Knockout Orange"
P134	SW# 7015 "Repose Gray"
P135	SW# 7017 "Dorian Gray"
HRC4	MATCH SW# 7019 "Gauntlet Gray"
REF SPECIFICATIONS	

1  
COLOR LEGEND:  
-REMOVED P140

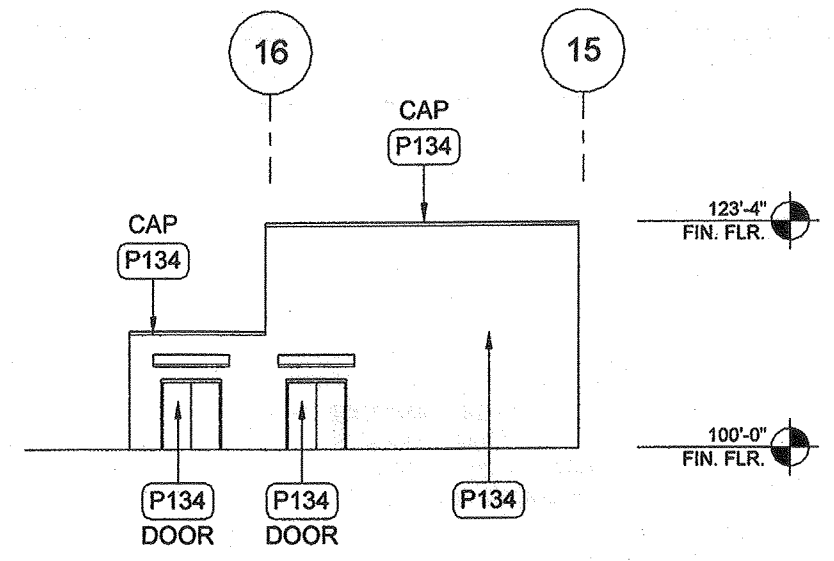
NS  
ED OVER  
EF 8-A2.1

N  
ED OVER  
EF 7-A2.1

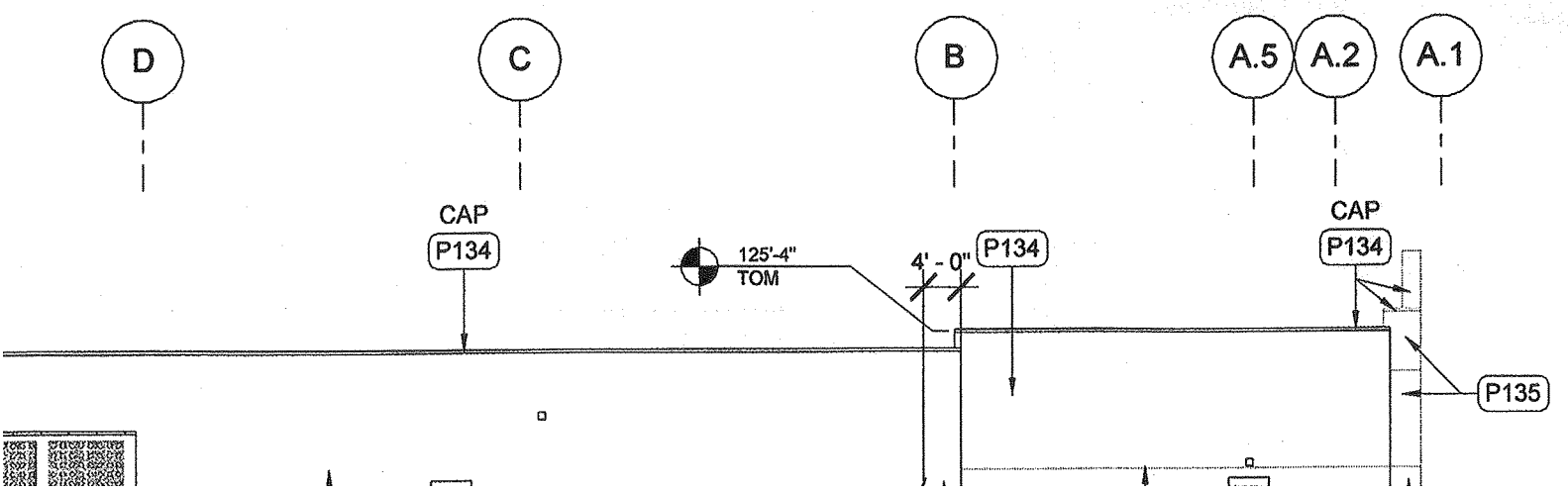
120'-8"  
TOM

100'-0"  
FIN. FLR.

N  
ED OVER  
EF 9-A2.1



**5 REAR SEASONAL SHOP**  
1" = 20'-0"



COLOR LEGEND	
P5	OSHA Standard "Safety Yellow"
P21	SW# 4081 "Safety Red"
P36	SW# 6989 "Domino"
P49	SW# 7019 "Gauntlet Gray"
P76U	Medium Walmart Blue (URETHANE)
P81	SW# 6258 "Tricorn Black"
P126U	SW# 6885 "Knockout Orange"
P134	SW# 7015 "Repose Gray"
P135	SW# 7017 "Dorian Gray"
HRC4	MATCH SW# 7019 "Gauntlet Gray"
REF SPECIFICATIONS	

1  
**COLOR LEGEND:**  
 -REMOVED P140

DEMOLITION NOTES
<ol style="list-style-type: none"> <li>REMOVE ALL UNLIT EXTERIOR STUD MOUNTED BUILDING SIGNS.</li> <li>NOT USED.</li> <li>NOT USED.</li> <li>NOT USED.</li> <li>NOT USED.</li> <li>REMOVAL OF BUILDING MOUNTED ITEMS, SHOWN OR NOTED TO BE DEMOLISHED OR AS REQUIRED BY SCOPE OF WORK, SHALL OCCUR PRIOR TO PAINTING BUILDING. COORDINATE DEMOLITION WORK SO EXTERIOR PAINTING WILL OCCUR PRIOR TO INSTALLATION OF BUILDING MOUNTED ITEMS.</li> </ol>

SHEET NOTES
<ol style="list-style-type: none"> <li>POWER WASH 100% OF EXTERIOR WALLS PRIOR TO PAINTING.</li> <li>PATCH AND REPAIR EXTERIOR WALL SURFACES, DAMAGED OR EXPOSED DUE TO REMOVAL OF BUILDING MOUNTED ITEMS, TO MATCH ADJACENT AS REQUIRED.</li> <li>REMOVE SEALANT AND BACKER MATERIAL FROM ALL BUILDING CONTROL JOINTS AND EXPANSION JOINTS. FILL AND SEAL JOINTS, REF SPEC 07900.</li> <li>REFER TO DETAILS ON SHEET A2.1 FOR SUBSTRATE AND FINISH REQUIREMENTS AT LOCATIONS OF BUILDING MOUNTED SIGNS.</li> <li>SURFACE EXISTING EIFS WHERE SHOWN (HATCHED AREA).</li> <li>PAINT EXTERIOR OF BUILDING AS SHOWN. AT WALL(S) WITH LIT ID/LOGO SIGN(S) MASK AND PAINT AROUND SIGN CHARACTERS.</li> <li>NOT USED.</li> <li>PAINT DOOR HOODS, HOLLOW METAL STEEL DOORS AND FRAMES, GUTTERS AND DOWNSPOUTS, EXPOSED METAL FLASHING, HANDRAILS, AND EXPOSED MISCELLANEOUS STEEL TO MATCH ADJACENT BUILDING COLOR UNO.</li> <li>PAINT ALL GAS PIPE ON ROOF. EXTEND PAINTING OF GAS PIPE DOWN SIDE WALLS TO GRADE OR METER. DO NOT PAINT METER OR VALVES.</li> <li>PAINT CANOPY STRUCTURAL STEEL AND FLASHING TO MATCH ADJACENT WALL.</li> <li>NOT USED.</li> <li>PAINT JIB CRANE- P36 ON JIB BOOM, P5 ON HANDRAILS.</li> <li>PAINT SPRINKLER VALVES P21. DO NOT PAINT OVER SIGHT GLASS OR FIRE ALARM BELL.</li> <li>PAINT ALL EXTERIOR BOLLARDS TO MATCH EXISTING COLOR UNLESS NOTED TO RECEIVE PLASTIC BOLLARD SLEEVE.</li> <li>PAINT SECURITY WALL PACK HOUSINGS TO MATCH ADJACENT WALL. REMOVE PAINT OVERSPRAY FROM LENSES.</li> <li>NOT USED.</li> <li>PAINT GARDEN CENTER STEEL DOORS AND FRAMES P81.</li> <li>NOT USED.</li> <li>NOT USED.</li> </ol>

**HARRISON FRENCH**  
 & ASSOCIATES  
 ARCHITECTS & ENGINEERS  
 t 479.273.7780  
 f 479.273.9436  
 1705 S. Walton Blvd, Suite 3  
 Bentonville, Arkansas 72712  
 www.hfa-ae.com

**STIPULATION FOR REUSE**  
 THIS DRAWING WAS PREPARED FOR USE ON A SPECIFIC SITE AT:  
 NEWBURGH, NEW YORK  
 CONTEMPORANEOUSLY WITH ITS ISSUE DATE ON 4/18/17 AND IT IS NOT SUITABLE FOR USE ON A DIFFERENT PROJECT SITE OR AT A LATER TIME. USE OF THIS DRAWING FOR REFERENCE OR EXAMPLE ON ANOTHER PROJECT REQUIRES THE SERVICES OF PROPERLY LICENSED ARCHITECTS AND ENGINEERS. REPRODUCTION OF THIS DRAWING FOR REUSE ON ANOTHER PROJECT IS NOT AUTHORIZED AND MAY BE CONTRARY TO THE LAW.

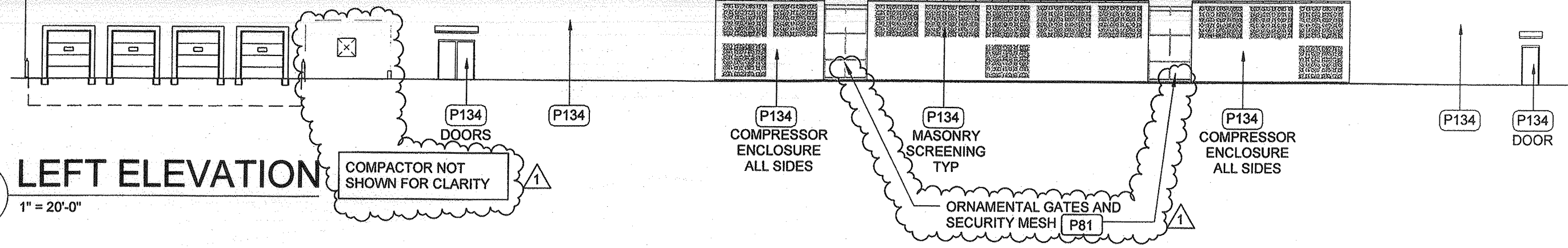
**Walmart**  
 NEWBURGH, NY  
 STORE NO: 2104  
 JOB NUMBER: 02-17-22104  
 192 SC GENERAL REMODEL

100'-0"  
FIN. FLR.

# 4 LEFT ELEVATION

1" = 20'-0"

COMPACTOR NOT SHOWN FOR CLARITY



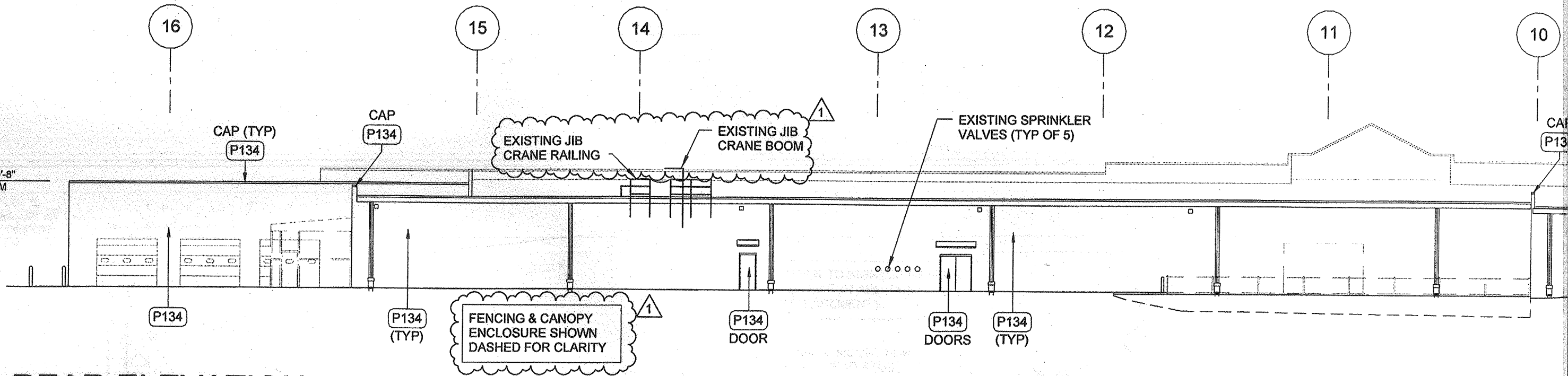
120'-8"  
TOM

# 3 REAR ELEVATION

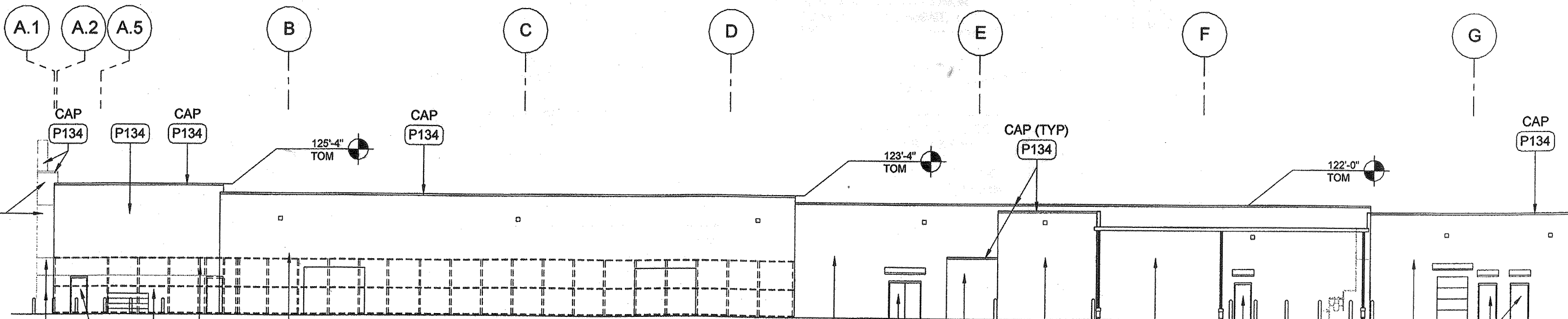
1" = 20'-0"

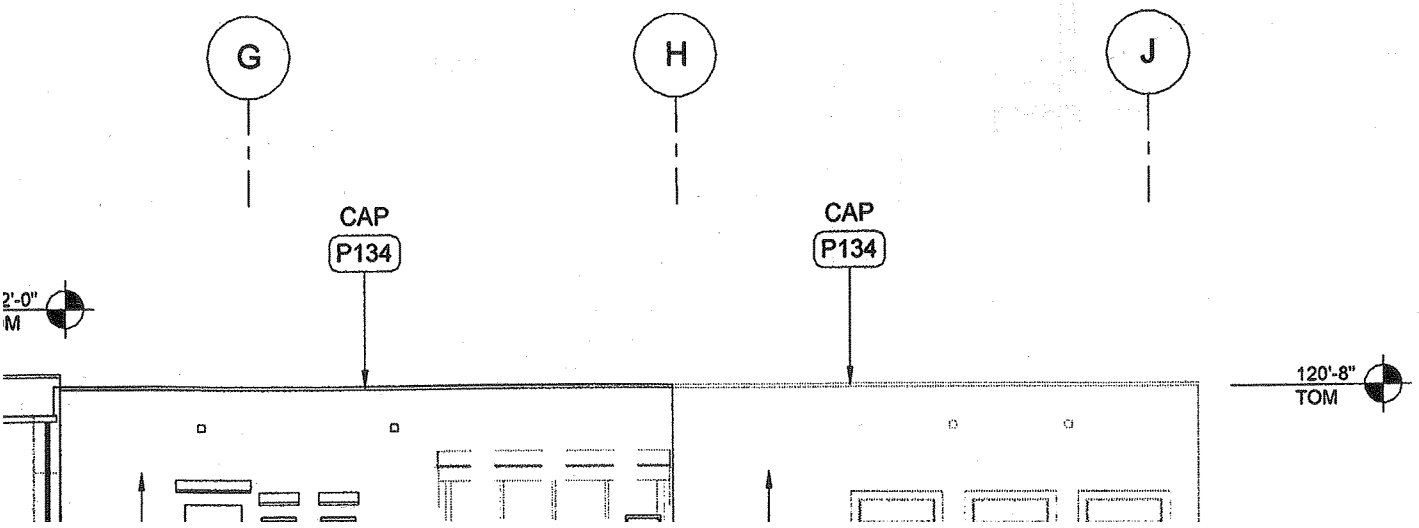
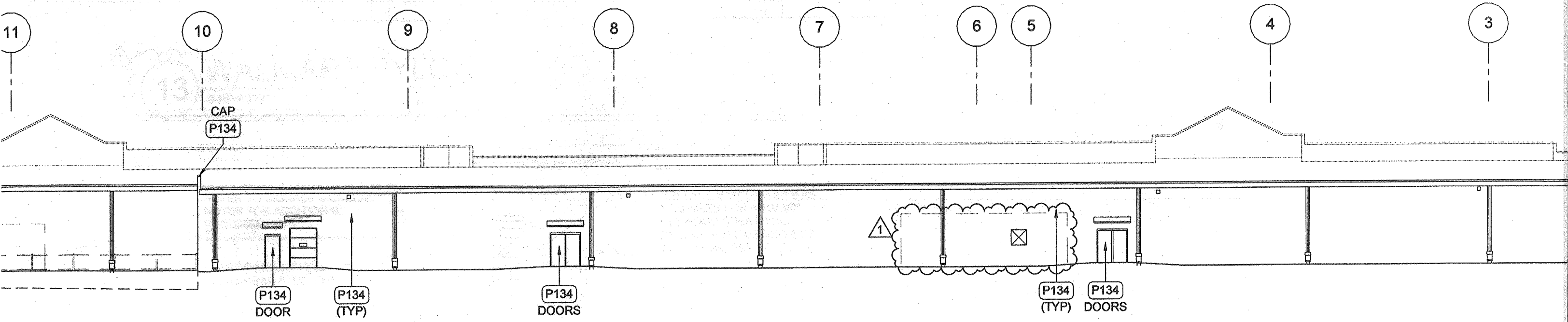
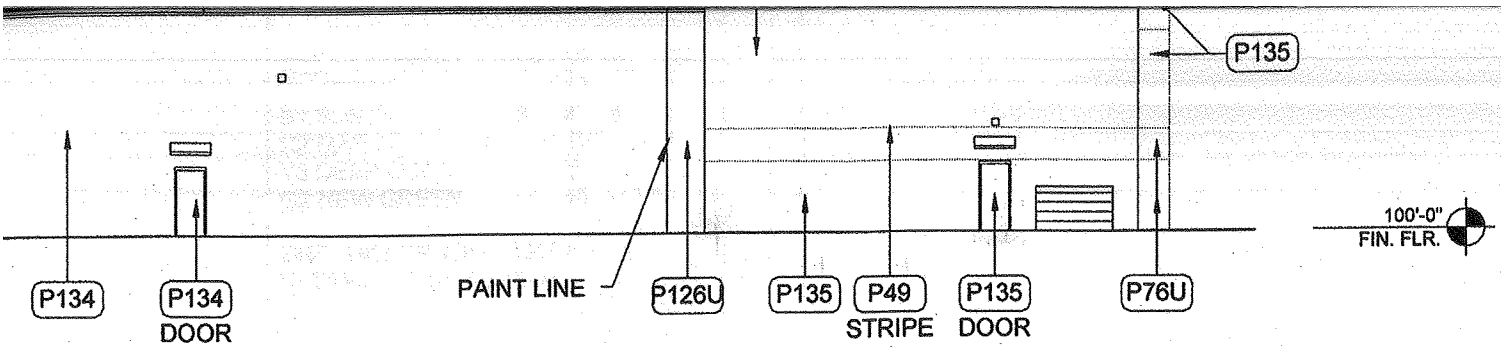
FENCING & CANOPY ENCLOSURE SHOWN DASHED FOR CLARITY

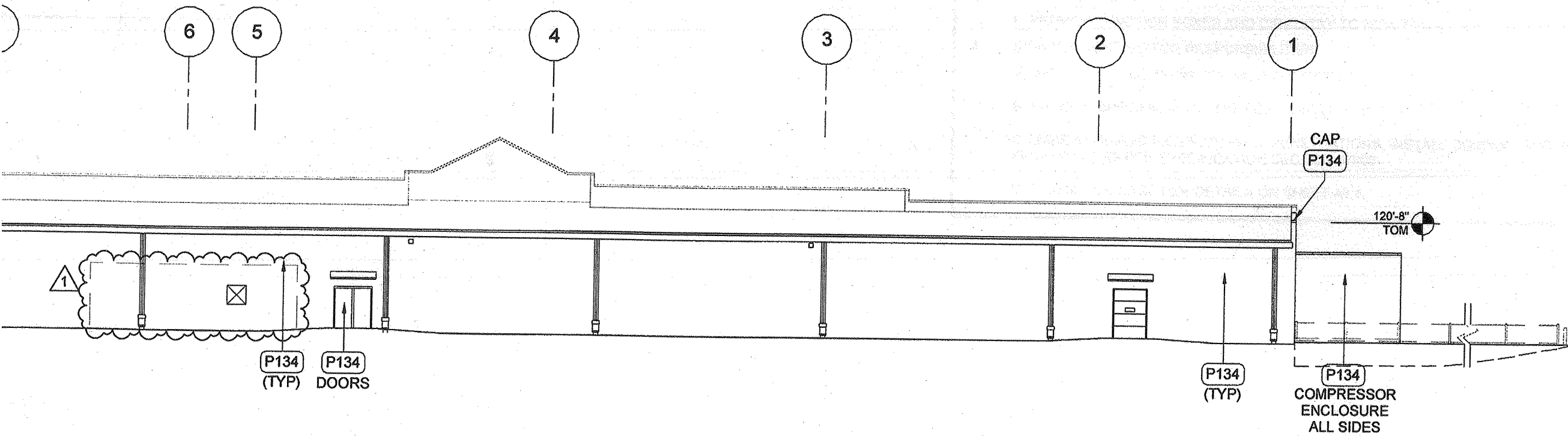
EXISTING JIB CRANE RAILING  
EXISTING JIB CRANE BOOM  
EXISTING SPRINKLER VALVES (TYP OF 5)



P135





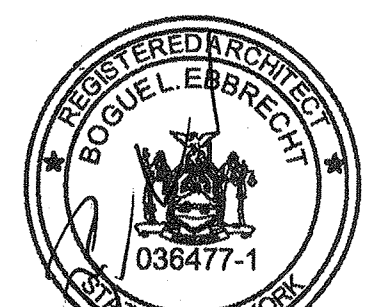


ISSUE BLOCK		
1	PR1	5/11/17

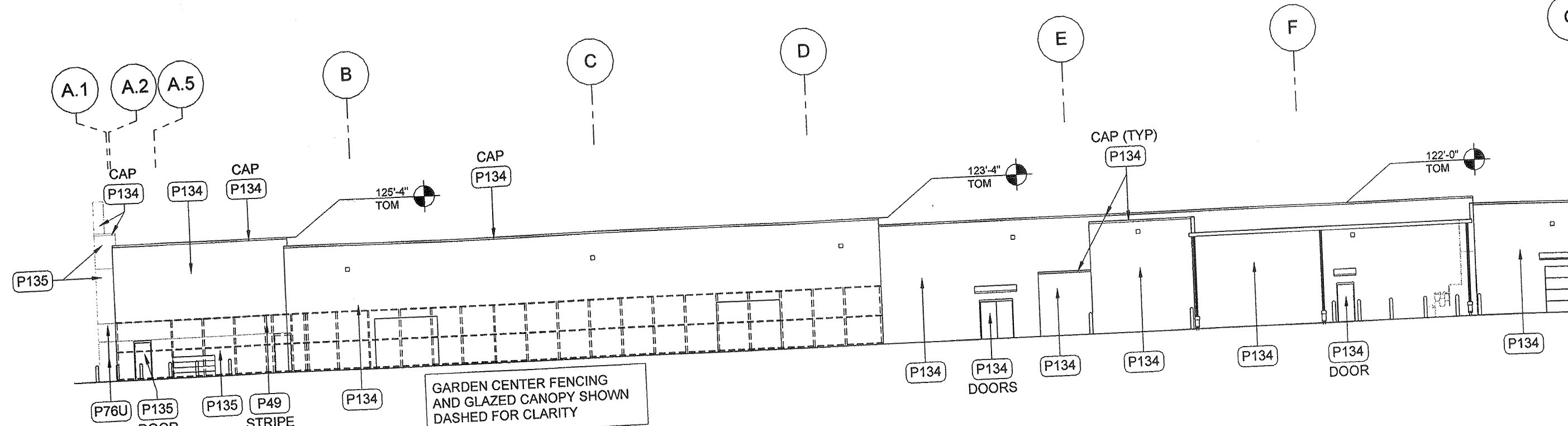
CHECKED BY:	<i>[Signature]</i>	KMH
DRAWN BY:	<i>[Signature]</i>	MKI
DOCUMENT DATE:		4/19/17
PROTO TYPE:		192 SC
PROTO CYCLE:		2/24/17

**NEW YORK ALTERATION WARNING**

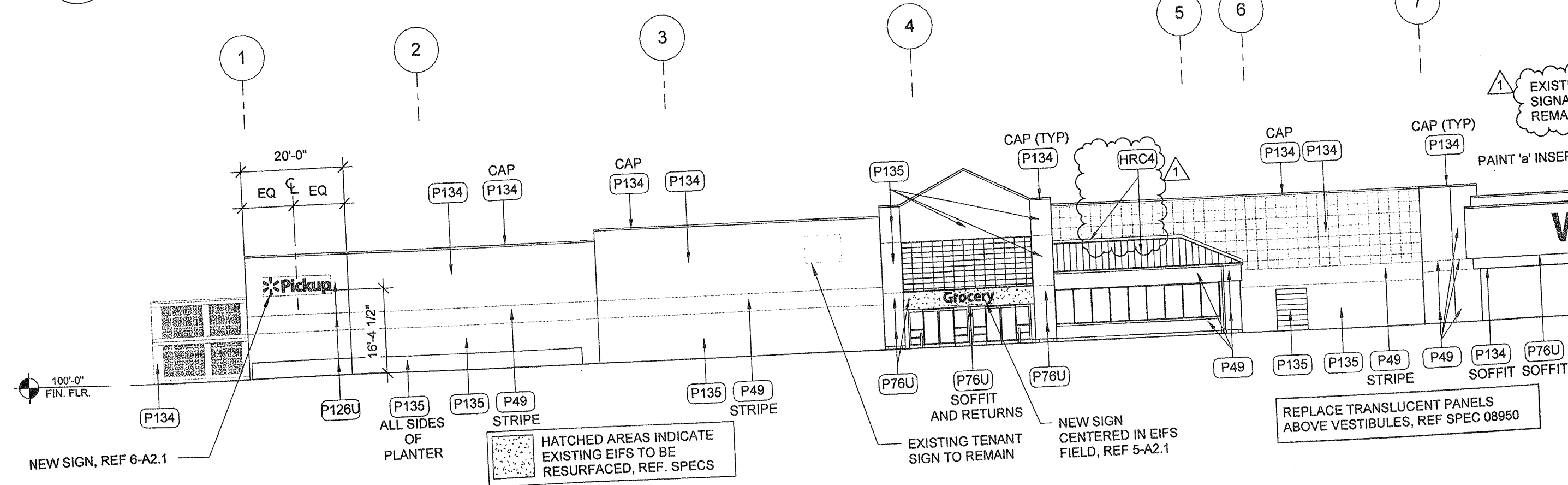
IT IS A VIOLATION OF NEW YORK REGULATION 69.5(b) FOR ANY PERSON, UNLESS ACTING UNDER THE DIRECTION OF A LICENSED ARCHITECT, TO ALTER AN ITEM IN ANY WAY WITHOUT AFFIXING TO THE ITEM HIS SEAL AND THE NOTIFICATION "ALTERED BY", FOLLOWED BY A SIGNATURE, DATE OF SUCH ALTERATION, AND A SPECIFIC DESCRIPTION OF THE ALTERATION.



3 1" = 20'-0"



2 **RIGHT ELEVATION**  
1" = 20'-0"

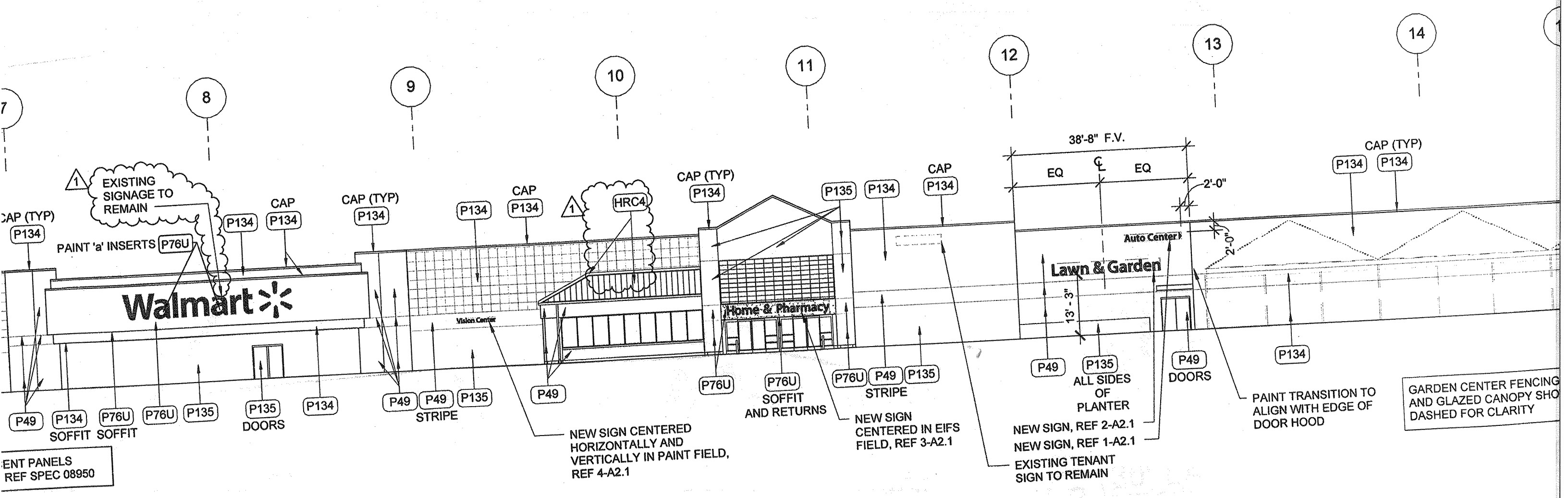
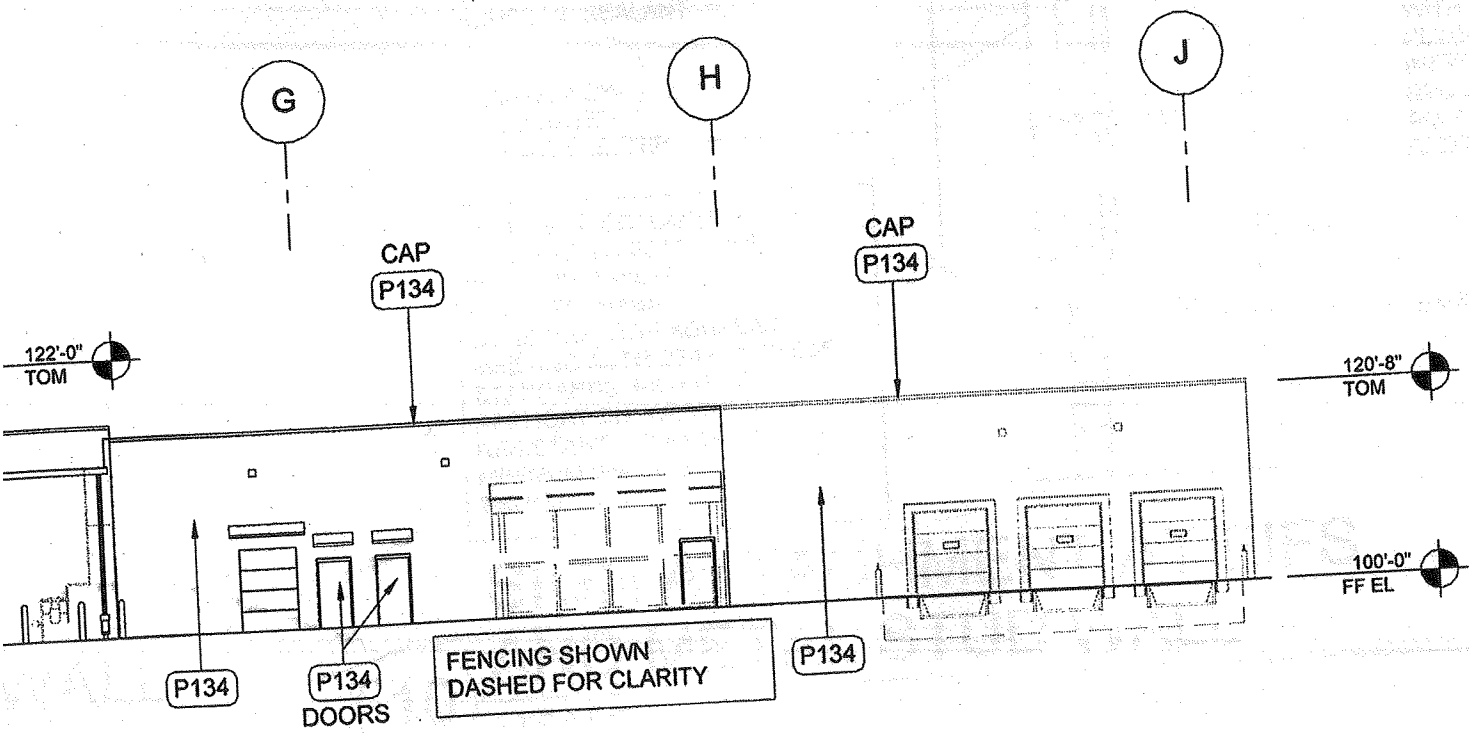


1 **FRONT ELEVATION**  
1" = 20'-0"

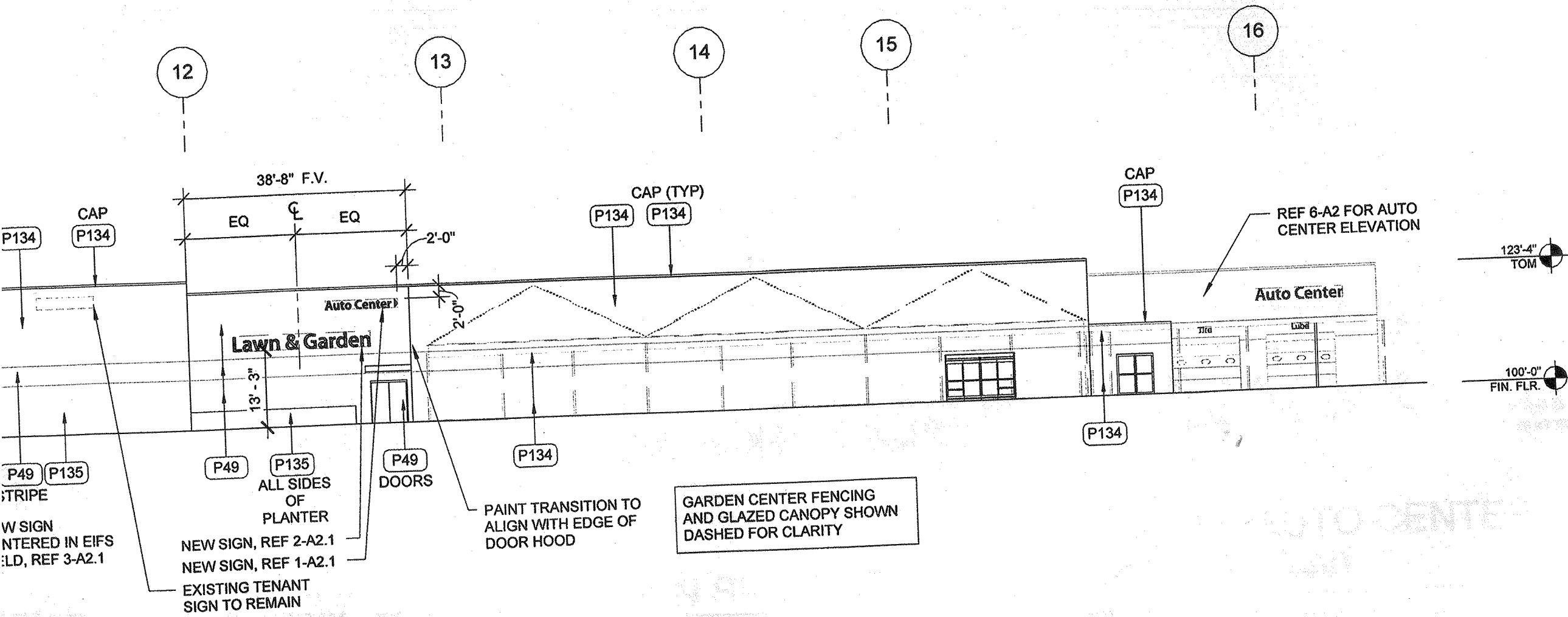
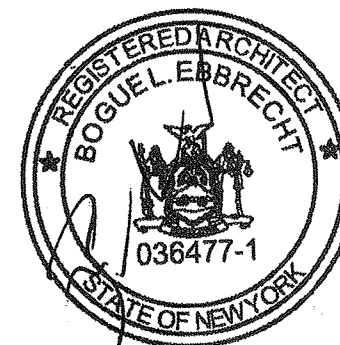
**IBEA**

20:46 AM  
Projects\2104 Newburgh, NY (RM) - Central\_Jainey.bennett.LVT





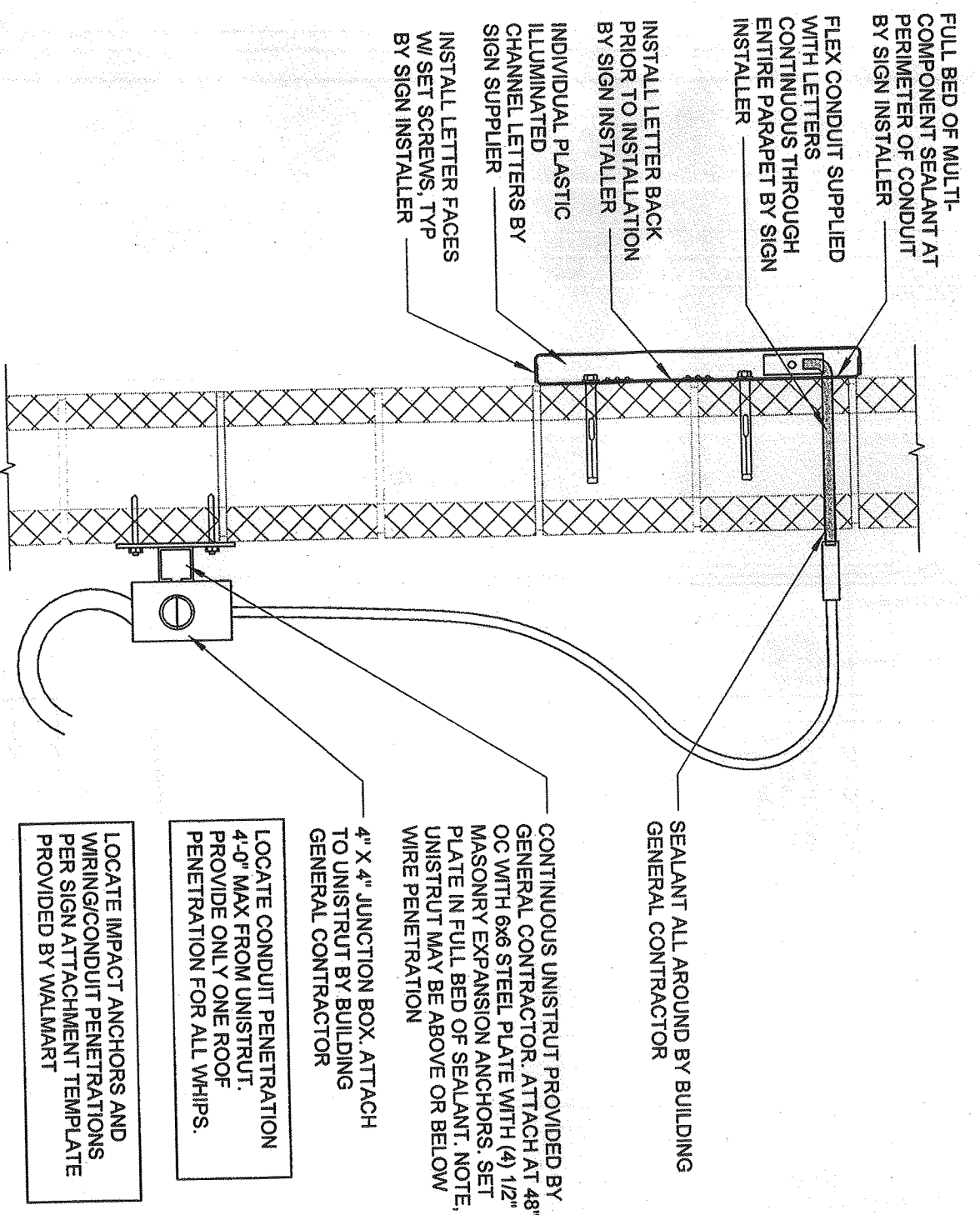




MAY 12 2017

**EXTERIOR ELEVATIONS**

SHEET: **A2**



REFER TO SIGNAGE GENERAL NOTES FOR ADDITIONAL REQUIREMENTS.

PLASTIC MOUNT FOR ALL-THREAD STUD, TYP

INSTALL 1/8" DIA ALL-THREAD STUDS INTO PLASTIC MOUNTS PRIOR TO SIGN INSTALLATION, TYP

3/8" DIA HOLE FILLED WITH ADHESIVE SEALANT. COAT ALL-THREAD STUD WITH ADHESIVE SEALANT PRIOR TO WALL ATTACHMENT, TYP

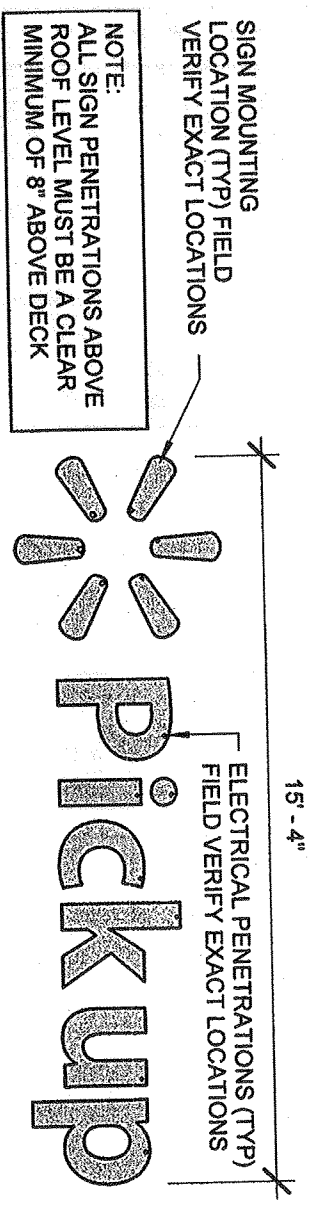
PLASTIC NON-ILLUMINATED CHANNEL LETTER

"ADHESIVE SEALANT" IS THE PRODUCT LN-950 BY LIQUID NAILS OR SIMILAR POLYURETHANE CONSTRUCTION ADHESIVE, MEETING ASTM AND C557 STANDARDS, EXTERIOR APPLICATION, WEATHER RESISTANT, LOAD WITH A MINIMUM SHEAR STRENGTH OF 250 PSI

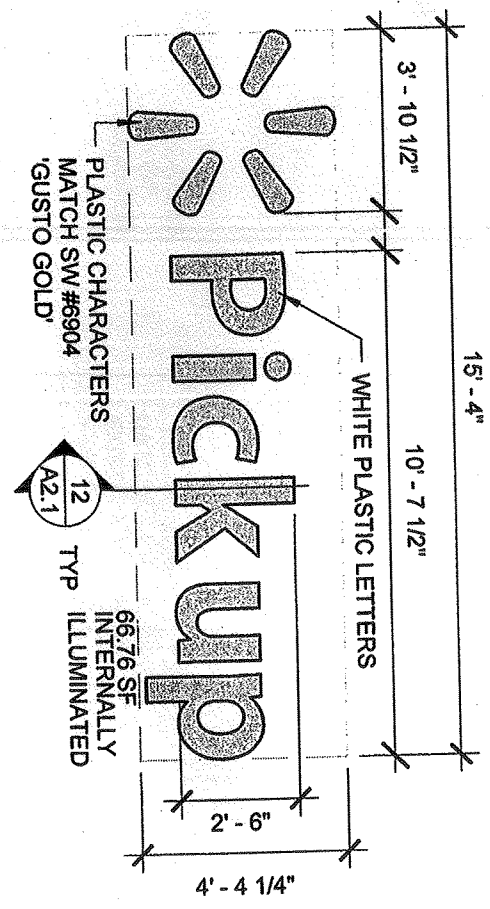
**12**

**PICKUP SIGNAGE ATTACHMENT**  
 1 1/2" = 1'-0"

NOTE TO SIGN INSTALLER:  
 ALL PRIMARY MOUNTING HOLES MUST BE UTILIZED. IF MOUNTING THROUGH PRIMARY HOLE IS OBSTRUCTED BY REBAR, METAL STUDS, CHANNELS, OR OTHER MISC METAL, SEAL PRIMARY HOLE IN SIGN CAN AND MOUNT THROUGH THE NEAREST ALTERNATE MOUNTING HOLE. PRIMARY HOLES ARE INDICATED WITH PREDRILLED HOLES THROUGH WASHERS. ALTERNATE HOLES ARE INDICATED WITH WASHERS ONLY OR ARE OTHERWISE MARKED.



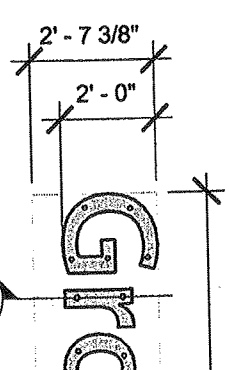
NOTE:  
 ALL SIGN PENETRATIONS ABOVE ROOF LEVEL MUST BE A CLEAR MINIMUM OF 8" ABOVE DECK



**2'-6" PICKUP SIGNAGE**

**11**

**SIGN AT**  
 1 1/2" = 1'-0"



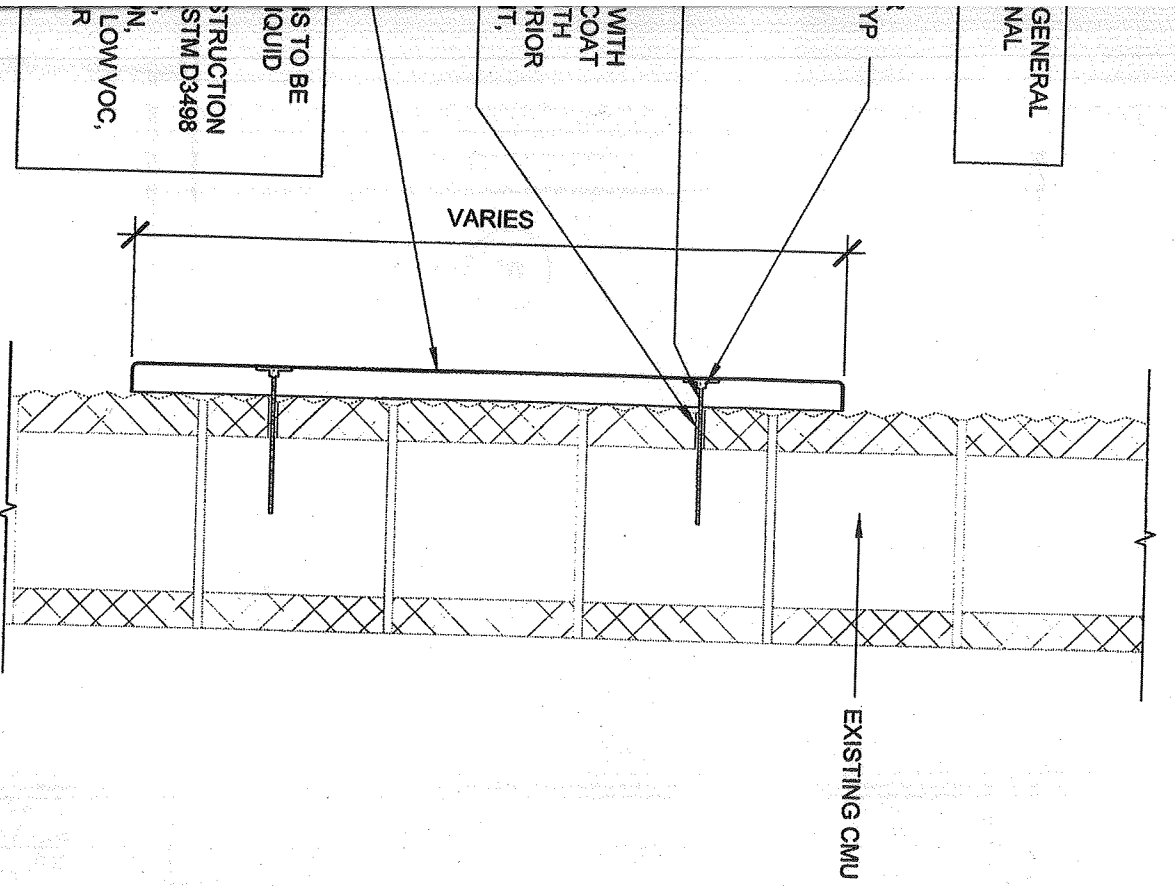
**5**

**24" GROCE**  
 1/4" = 1'-0"

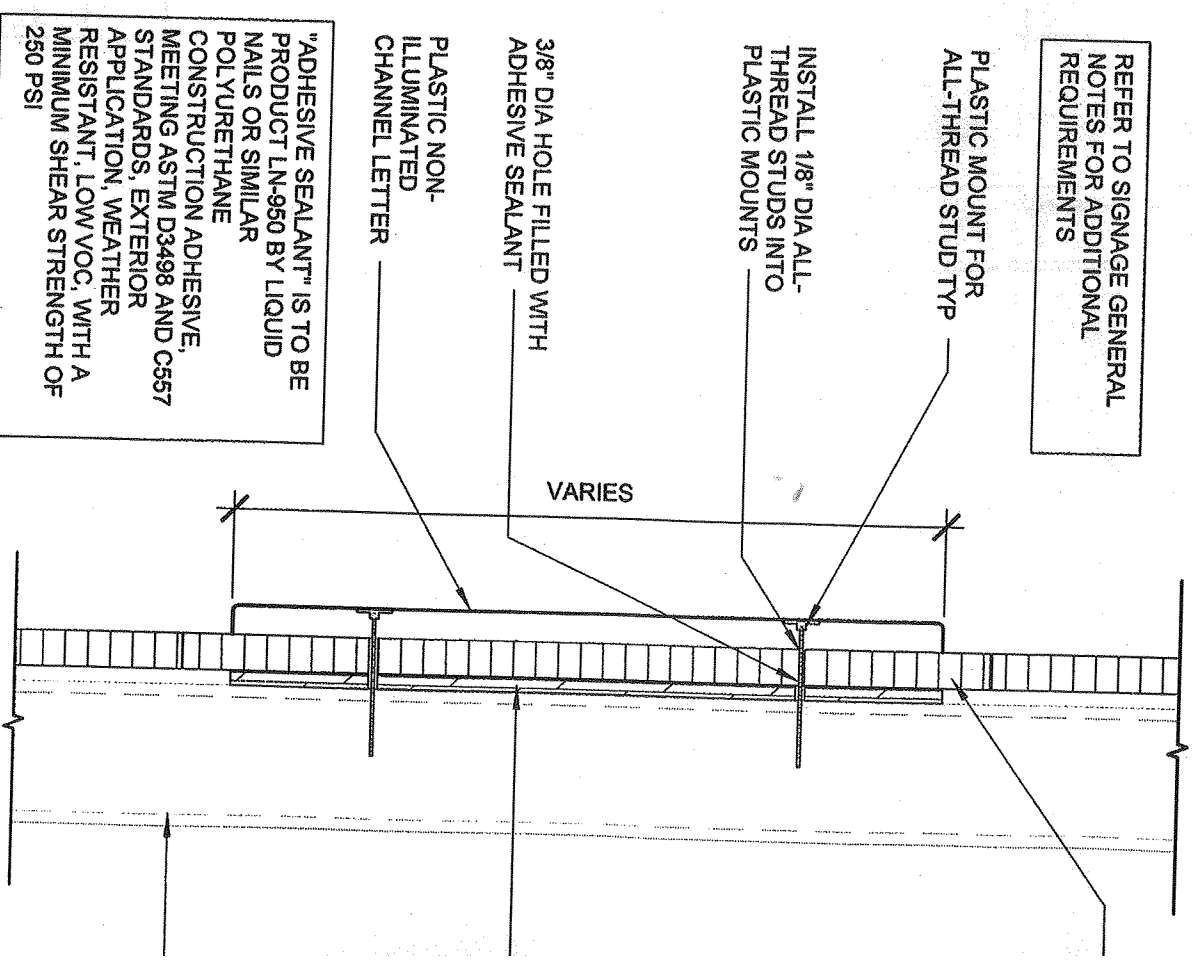
W1 WHITE	-	43	-	1
B1 BLACK	-	4	-	1
R2 MAROON	-	19	-	1
Y3 DEEP GOLD	-	48	-	1
G2 NEW GREEN	-	18	-	1
ONE GALLON #B54T00104				
UI TRADECP #796999993				

ALL SITE SIGN WORK DONE BY SIGN CONTRACTOR

**13 WALDMART PYLON**  
3/16" = 1'-0"



**ATTACHMENT AT CMU WALL**



**10 SIGN ATTACHMENT AT EIFS AND METAL STUD WALL**  
1 1/2" = 1'-0"

REFER TO SIGNAGE GENERAL NOTES FOR ADDITIONAL REQUIREMENTS

PLASTIC MOUNT FOR ALL-THREAD STUD TYP

INSTALL 1/8" DIA ALL-THREAD STUDS INTO PLASTIC MOUNTS

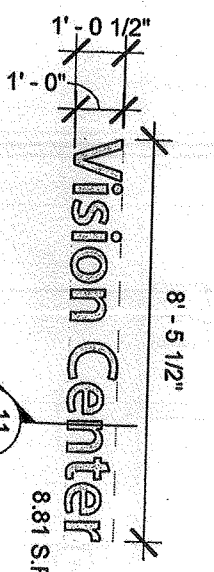
3/8" DIA HOLE FILLED WITH ADHESIVE SEALANT

PLASTIC NON-ILLUMINATED CHANNEL LETTER

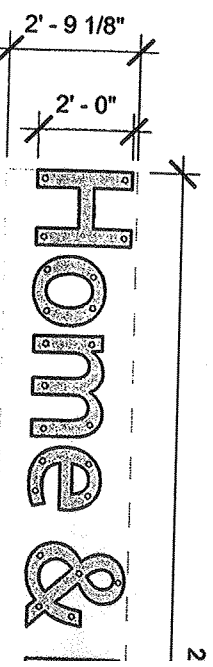
"ADHESIVE SEALANT" IS TO BE PRODUCT LN-950 BY LIQUID NAILS OR SIMILAR POLYURETHANE CONSTRUCTION ADHESIVE, MEETING ASTM D3498 AND C557 STANDARDS, EXTERIOR APPLICATION, WEATHER RESISTANT, LOWVOC, WITH A MINIMUM SHEAR STRENGTH OF 250 PSI

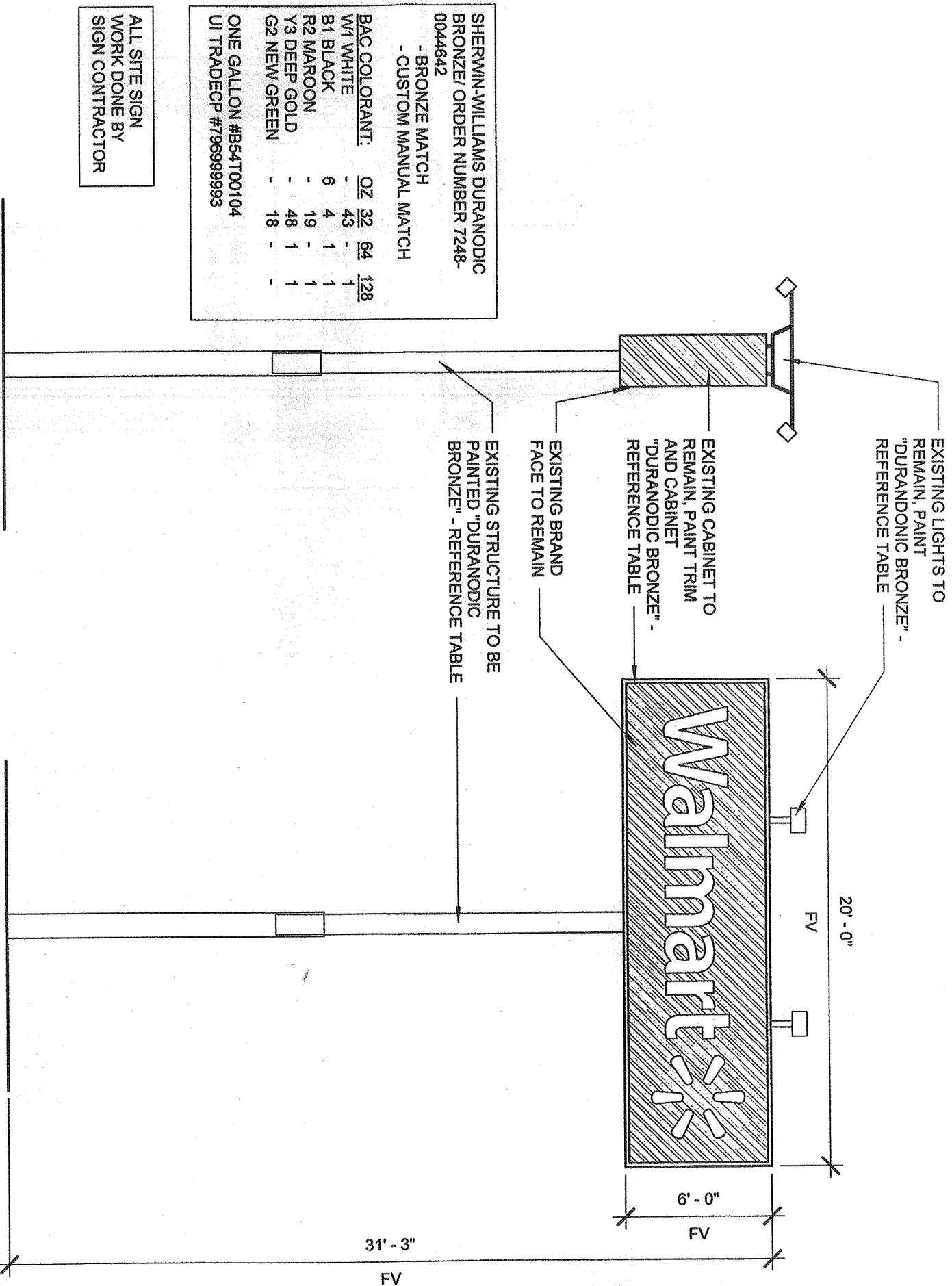
9 5/8"

**12" VISION CENTER**  
26.63 S.F.



**Home &**  
2'-9 1/8"





SHERWIN-WILLIAMS DURANODIC BRONZE / ORDER NUMBER 7248-0044642

- BRONZE MATCH  
- CUSTOM MANUAL MATCH

BAC COLORANT:

W1 WHITE	02	32	64	128
B1 BLACK	6	4	1	1
R2 MAROON	19	1	1	1
Y3 DEEP GOLD	48	1	1	1
G2 NEW GREEN	18	1	1	1

ONE GALLON #854T00104  
UI TRADECP #796999993

ALL SITE SIGN WORK DONE BY SIGN CONTRACTOR

# 13 WALMART PYLON

3/16" = 1'-0"

REFER TO SIGNAGE GENERAL NOTES FOR ADDITIONAL REQUIREMENTS

PLASTIC MOUNT FOR ALL-THREAD STUD TYP

INSTALL 1/8" DIA ALL-THREAD STUDS INTO PLASTIC MOUNTS

3/8" DIA HOLE FILLED WITH ADHESIVE SEALANT  
PLASTIC NON-ILLUMINATED CHANNEL LETTER

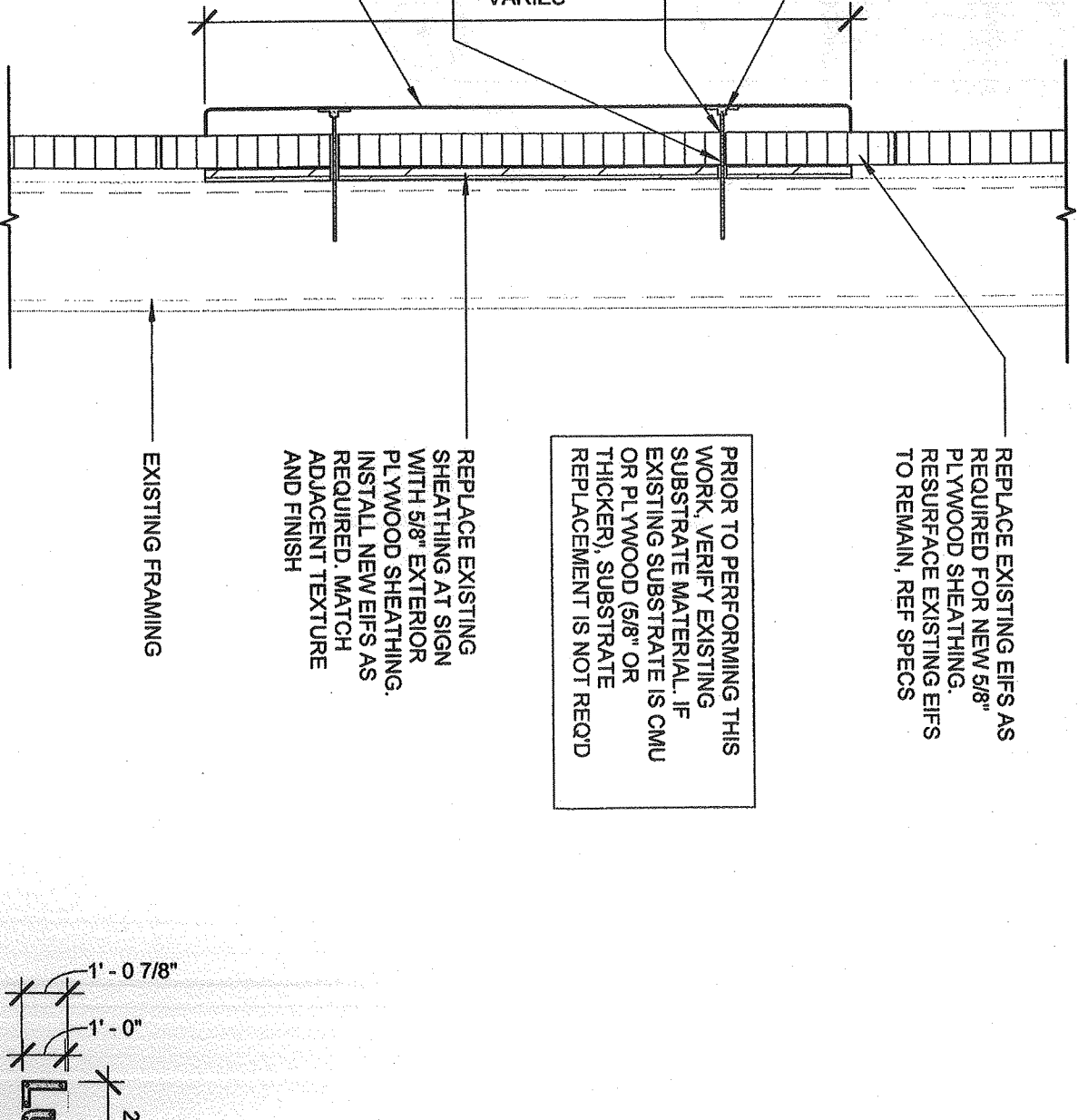
"ADHESIVE SEALANT" IS TO BE PRODUCT LN-950 BY LIQUID NAILS OR SIMILAR POLYURETHANE CONSTRUCTION ADHESIVE, MEETING ASTM D3498 AND C657 STANDARDS, EXTERIOR APPLICATION, WEATHER RESISTANT, LOW VOC, WITH A MINIMUM SHEAR STRENGTH OF 250 PSI

REPLACE EXISTING EIFS AS REQUIRED FOR NEW 5/8" PLYWOOD SHEATHING. RESURFACE EXISTING EIFS TO REMAIN, REF SPECS

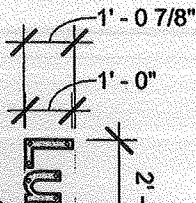
PRIOR TO PERFORMING THIS WORK, VERIFY EXISTING SUBSTRATE MATERIAL. IF EXISTING SUBSTRATE IS CMU OR PLYWOOD (5/8" OR THICKER), SUBSTRATE REPLACEMENT IS NOT REQD

REPLACE EXISTING SHEATHING AT SIGN WITH 5/8" EXTERIOR PLYWOOD SHEATHING. INSTALL NEW EIFS AS REQUIRED. MATCH ADJACENT TEXTURE AND FINISH

EXISTING FRAMING



## SIGN ATTACHMENT AT EIFS



CMU



**EXISTING SIGNAGE SCHEDULE**

LOCATION	QTY	COLOR	INDIVIDUAL AREA	TOTAL AREA
ETR)	1	WHITE		
	1	YELLOW	298.00 SF	298.00 SF
	1	WHITE	17.97 SF	17.97 SF
macy	1	WHITE	61.85 SF	61.85 SF
g	1	WHITE	49.47 SF	49.47 SF
w/ arrow)	1	WHITE	19.47 SF	19.47 SF
M"	1	YELLOW	20.25 SF	20.25 SF
<b>IGNAGE</b>				467.01 SF
<b>IGNAGE</b>	1	WHITE	17.75 SF	17.75 SF
	1	WHITE	2.38 SF	4.76 SF
	1	WHITE	3.13 SF	3.13 SF
<b>ITER SIGNAGE</b>				25.64 SF
<b>NAGE</b>	1	BLUE	122 SF	122 SF
<b>IE SIGNAGE</b>				122 SF
<b>SIGNAGE</b>			614.65 SF	

**NEW SIGNAGE SCHEDULE**

SIGNAGE LOCATION	QTY	LIGHTED	COLOR	SIZE	INDIVIDUAL AREA	TOTAL AREA
<b>FRONT SIGNAGE</b>						
Walmart (ETR)	1	LED	WHITE	5'-6"		
Spark (ETR)	1	LED	YELLOW	8'-0"	298.00 SF	298.00 SF
Grocery	1	N/A	WHITE	2'-0"	25.63 SF	25.63 SF
Home & Pharmacy	1	N/A	WHITE	2'-0"	61.85 SF	61.85 SF
Pickup	1	LED	WHITE	2'-6"		
Spark	1	LED	YELLOW	4'-4 1/4"	66.76 SF	66.76 SF
Lawn & Garden	1	N/A	WHITE	2'-6"	63.89 SF	63.89 SF
Auto Center->	1	N/A	WHITE	1'-6"	19.47 SF	19.47 SF
Vision Center	1	N/A	WHITE	1'-0"	8.81 SF	8.81 SF
McDonald's "M" (ETR)	1	N/A	YELLOW	4'-6"	20.25 SF	20.25 SF
<b>TOTAL FRONT SIGNAGE</b>						564.66 SF
<b>AUTO CENTER SIGNAGE</b>						
Auto Center	1	N/A	WHITE	2'-0"	31.47 SF	31.47 SF
Tire	2	N/A	WHITE	1'-0"	2.38 SF	4.76 SF
Lube	1	N/A	WHITE	1'-0"	3.13 SF	3.13 SF
<b>TOTAL AUTO CENTER SIGNAGE</b>						39.36 SF
<b>PYLON SITE SIGNAGE</b>						
Pylon Sign (ETR)	1	N/A	BLUE	N/A	122.00 SF	122.00 SF
<b>TOTAL PYLON SITE SIGNAGE</b>						122.00 SF
<b>TOTAL BUILDING SIGNAGE</b>						726.02 SF

NEW SIGNAGE SCHEDULE  
 -ADDED MCDONALDS AND SITE PYLON  
 -REVISED TOTAL FRONT SIGNAGE  
 -REVISED TOTAL BUILDING SIGNAGE

**SIGNAGE GENERAL NOTES**

- SIGNAGE FURNISHED BY WAL-MART AND INSTALLED BY OTHERS.
- ALL EXISTING WALMART EXTERIOR SIGNAGE IS TO REMAIN IN PLACE ON THE BUILDING UNTIL THE EXTERIOR SIGN COMPANY IS ON SITE. THE EXTERIOR SIGN COMPANY WILL REMOVE EXISTING SIGNAGE AND INSTALL NEW SIGNAGE. ONCE NEW SIGNAGE IS INSTALLED, GENERAL CONTRACTOR WILL PERFORM PATCH, REPAIR, AND PAINTING WORK NOTED IN PLANS AFTER NEW SIGNAGE IS INSTALLED.
  - FOR STORES THAT REQUIRE STRUCTURAL MODIFICATIONS OR REPAIRS FOR INSTALLATION OF NEW EXTERIOR SIGNAGE, A TEMPORARY BANNER WILL BE INSTALLED BY THE EXTERIOR SIGN COMPANY PRIOR TO REMOVAL OF EXISTING EXTERIOR SIGNAGE. BANNER WILL REMAIN IN PLACE UNTIL ALL MODIFICATIONS AND/OR REPAIRS HAVE BEEN COMPLETED AND NEW SIGNAGE IS INSTALLED. GC SHALL PRIORITIZE MODIFICATIONS/REPAIRS REQUIRED FOR INSTALLATION OF NEW EXTERIOR SIGNS WHILE EXTERIOR SIGN COMPANY IS ON SITE.
  - TEMPORARY BANNER WILL BE APPROXIMATELY 125 SF (5'X25').
  - EXTERIOR SIGN WORK NEEDS TO BE SCHEDULED, COORDINATED, AND COMPLETED DURING WEEK 6 OF THE CONSTRUCTION SCHEDULE.
- GENERAL CONTRACTOR RESPONSIBILITIES:
  - REMOVE EXISTING EXTERIOR BUILDING SIGNAGE AS NOTED ON SHEET A2. (LIGHTED ID/LOGO SIGNS WILL BE REMOVED BY OTHERS.)
  - BY END OF FIRST WEEK OF CONSTRUCTION, REVIEW EXISTING CONSTRUCTION WHERE SIGN(S) WILL BE INSTALLED. IF EXISTING CONDITIONS DO NOT MATCH SIGN ATTACHMENT DETAILS SHOWN, REQUEST APPROVAL FROM CONSTRUCTION MANAGER TO SUBMIT RFI IN ACCORDANCE WITH SECTION 01255. NOTE DIFFERENCES IN CONSTRUCTION, INCLUDING DIMENSIONS, AND INCLUDE PHOTOGRAPHS FOR CLARIFICATION.
  - NOT USED.
  - NOT USED.
  - NOT USED.
  - NOT USED.
  - VERIFY VOLTAGE AT CIRCUITS FEEDING LIGHTED SIGNAGE. REFER TO ELECTRICAL
  - MAKE FINAL TERMINATIONS ON LIGHTED SIGNAGE.
  - PROVIDE JUNCTION BOXES AND CIRCUITRY TO NEW "Pickup" AND "Spark" SIGNAGE.
  - REMOVE ALL SIGNS UNLESS NOTED OTHERWISE.
  - FURNISH SPECIFIED CONDUIT FOR LIGHTED SIGNAGE.
  - MAKE REQUIRED EXTERIOR WALL PENETRATIONS, INSTALL CONDUIT, AND SEAL PENETRATIONS PER SPECIFICATION SECTION 07900.
  - INSTALL SIGNAGE PER DETAILS ON SHEET A2.1.



**HARRISON FRENCH & ASSOCIATES**  
 ARCHITECTS & ENGINEERS

STIPULATION FOR REUSE  
 THIS DRAWING WAS PREPARED FOR USE ON A SPECIFIC SITE AT:  
 NEWBURGH, NEW YORK  
 CONTEMPORANEOUSLY WITH ITS ISSUE

ISSUE	BLOCK
1	CCD

CHECKED  
 DRAWN BY  
 DOCUMENT  
 PROTO TY  
 PROTO CY

**NEW SIGNAGE IS INSTALLED.**

A. FOR STORES THAT REQUIRE STRUCTURAL MODIFICATIONS OR REPAIRS FOR INSTALLATION OF NEW EXTERIOR SIGNAGE, A TEMPORARY BANNER WILL BE INSTALLED BY THE EXTERIOR SIGN COMPANY PRIOR TO REMOVAL OF EXISTING EXTERIOR SIGNAGE. BANNER WILL REMAIN IN PLACE UNTIL ALL MODIFICATIONS AND/OR REPAIRS HAVE BEEN COMPLETED AND NEW SIGNAGE IS INSTALLED. GC SHALL PRIORITIZE MODIFICATIONS/REPAIRS REQUIRED FOR INSTALLATION OF NEW EXTERIOR SIGNS WHILE EXTERIOR SIGN COMPANY IS ON SITE.

B. TEMPORARY BANNER WILL BE APPROXIMATELY 125 SF (5'X25').  
 C. EXTERIOR SIGN WORK NEEDS TO BE SCHEDULED, COORDINATED, AND COMPLETED DURING WEEK 6 OF THE CONSTRUCTION SCHEDULE.

**3. GENERAL CONTRACTOR RESPONSIBILITIES:**

A. REMOVE EXISTING EXTERIOR BUILDING SIGNAGE AS NOTED ON SHEET A2. (LIGHTED ID/LOGO SIGNS WILL BE REMOVED BY OTHERS.)

B. BY END OF FIRST WEEK OF CONSTRUCTION, REVIEW EXISTING CONSTRUCTION WHERE SIGN(S) WILL BE INSTALLED. IF EXISTING CONDITIONS DO NOT MATCH SIGN ATTACHMENT DETAILS SHOWN, REQUEST APPROVAL FROM CONSTRUCTION MANAGER TO SUBMIT RFI IN ACCORDANCE WITH SECTION 01255. NOTE DIFFERENCES IN CONSTRUCTION, INCLUDING DIMENSIONS, AND INCLUDE PHOTOGRAPHS FOR CLARIFICATION.

C. NOT USED.

D. NOT USED.

E. NOT USED.

F. NOT USED.

G. VERIFY VOLTAGE AT CIRCUITS FEEDING LIGHTED SIGNAGE. REFER TO ELECTRICAL

H. MAKE FINAL TERMINATIONS ON LIGHTED SIGNAGE.

**4. PROVIDE JUNCTION BOXES AND CIRCUITRY TO NEW "Pickup" AND "Spark" SIGNAGE. SIGNAGE CONTRACTOR RESPONSIBILITIES:**

A. REMOVE ALL SIGNS UNLESS NOTED OTHERWISE.

B. FURNISH SPECIFIED CONDUIT FOR LIGHTED SIGNAGE.

C. MAKE REQUIRED EXTERIOR WALL PENETRATIONS, INSTALL CONDUIT, AND SEAL PENETRATIONS PER SPECIFICATION SECTION 07900.

D. INSTALL SIGNAGE PER DETAILS ON SHEET A2.1.

ISSUE BLOCK:

1	CCD1

CHECKED BY:

DRAWN BY:

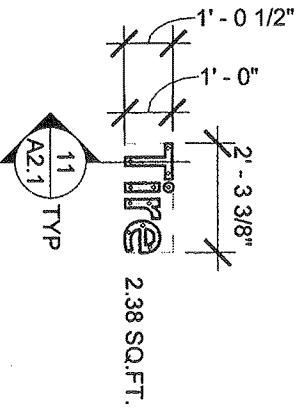
DOCUMENT:

PROTO TYPE:

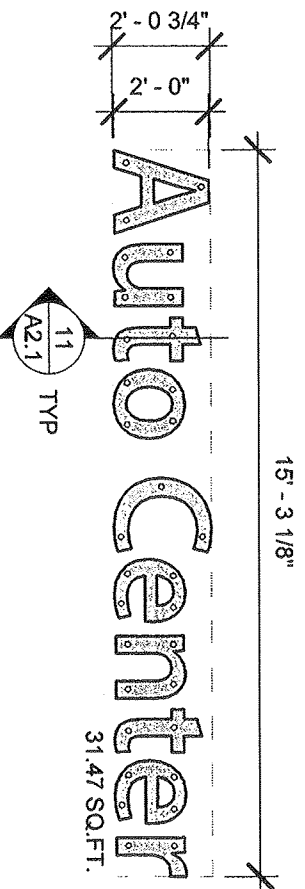
PROTO CYC:

NEW YORK

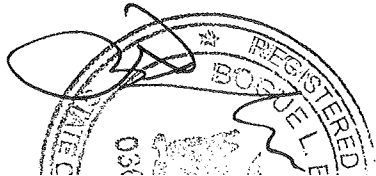
IT IS A VIOLATION OF ANY REGULATIONS UNDER THE LICENSED ALTER AN INSTALL WITHOUT HIS NOTIFICATION FOLLOWED DATE OF SIGNATURE AND A SPEC OF THE



**8 12" TIRE SIGNAGE**  
1/4" = 1'-0"



**7 24" AUTO CENTER SIGNAGE**  
1/4" = 1'-0"

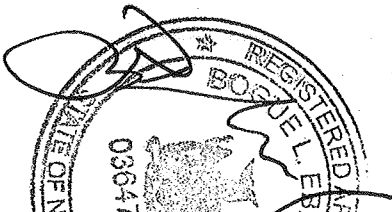


- F. NOT USED.
- G. VERIFY VOLTAGE AT CIRCUITS FEEDING LIGHTED SIGNAGE. REFER TO ELECTRICAL
- H. MAKE FINAL TERMINATIONS ON LIGHTED SIGNAGE.
- I. PROVIDE JUNCTION BOXES AND CIRCUITRY TO NEW "Pickup" AND "Spark" SIGNAGE. SIGNAGE CONTRACTOR RESPONSIBILITIES:
- A. REMOVE ALL SIGNS UNLESS NOTED OTHERWISE.
- B. FURNISH SPECIFIED CONDUIT FOR LIGHTED SIGNAGE.
- C. MAKE REQUIRED EXTERIOR WALL PENETRATIONS, INSTALL CONDUIT, AND SEAL PENETRATIONS PER SPECIFICATION SECTION 07900.
- D. INSTALL SIGNAGE PER DETAILS ON SHEET A2.1.


CHECKED BY: \_\_\_\_\_  
 DRAWN BY: \_\_\_\_\_  
 DOCUMENT \_\_\_\_\_  
 PROTO TYP \_\_\_\_\_  
 PROTO CYC \_\_\_\_\_

NEW YORK STATE

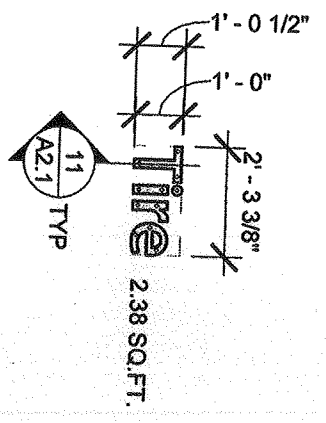
IT IS A VIOLATION OF ANY LAW OR REGULATION OF ANY PERSON UNDER THE LICENSED PROFESSIONAL ENGINEER WITHOUT A LICENSE TO ALTER ANY ITEM HIS NOTIFICATION FOLLOWED DATE OF SIGNATURE AND A SPECIFIC OF THE /



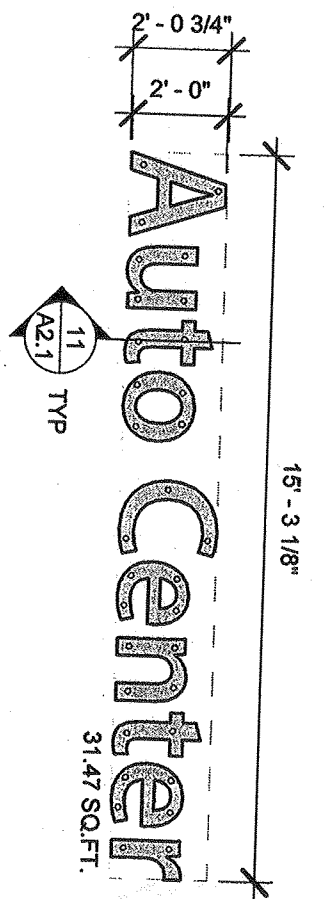
JUN 21 2017

EXTERIOR  
 DETAILS  
 SIGNAGE

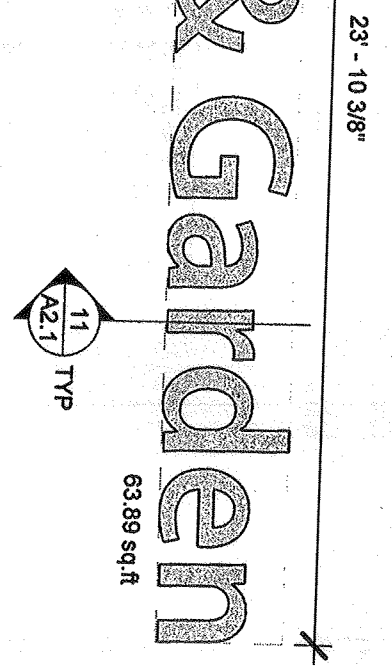
SHEET:  
**A2.**



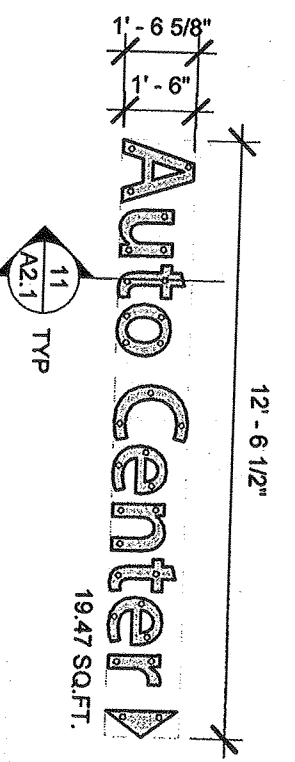
**8** 12" TIRE SIGNAGE  
 1/4" = 1'-0"



**7** 24" AUTO CENTER SIGNAGE  
 1/4" = 1'-0"



ARDEN SIGNAGE



**1** 18" AUTO CENTER (w/  
 ARROW)  
 1/4" = 1'-0"



Full Size Site-Building Plans  
are available for viewing at the

**Zoning Board of Appeals**  
Office located at  
**308 Gardnertown Road**  
Newburgh, NY

845-566-4901