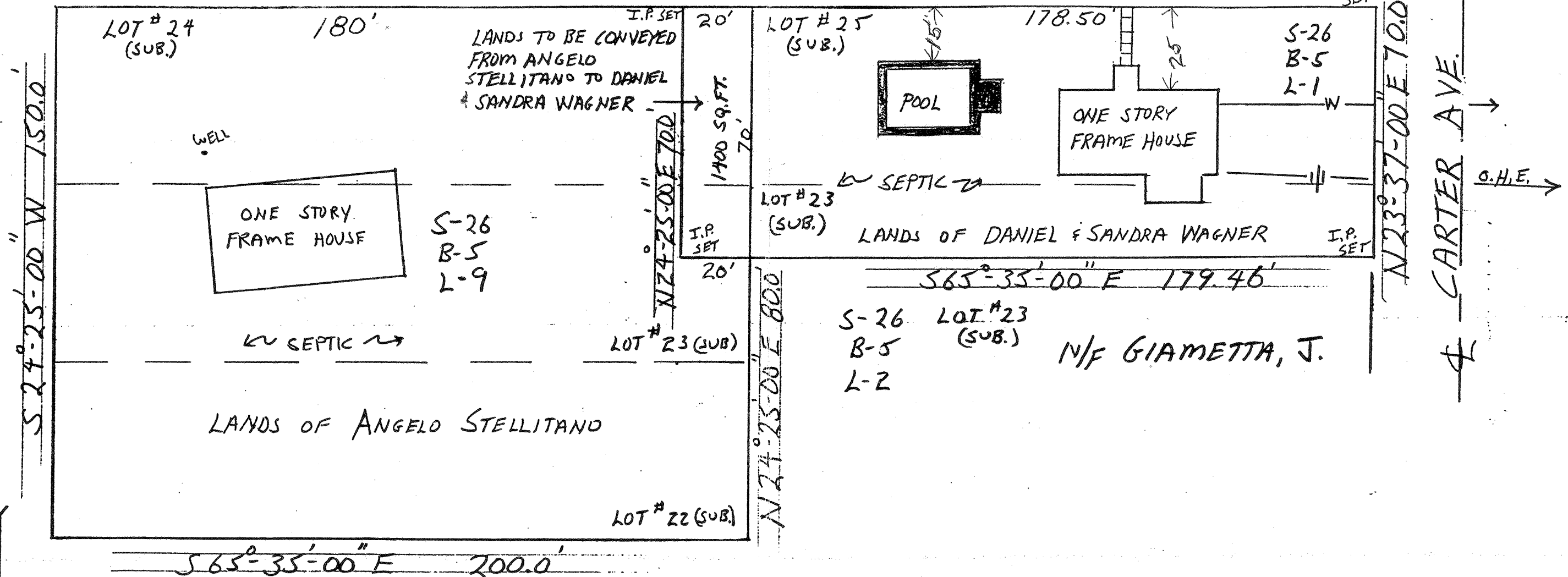


REF. MAP - "LUMVILLE HEIGHTS" FILED IN
O.C.C.O AS MAP # 987

KOHL AVE.

N 65° 35' 00" W 378.50'



CERTIFIED ACCURATE & CORRECT TO:
ANGELO STELLITANO
DANIEL & SANDRA WAGNER

BY GERALD ZIMMERMAN, P.L.S.
N.Y.S. LIC. # 49410, THIS 13 DAY
OF AUG., 1988

Gerald Zimmerman

LOT LINE CHANGE		
LANDS OF ANGELO STELLITANO		
SCALE: 1" = 30'	APPROVED BY:	DRAWN BY CH
DATE: 8-12-88	KOHL AVE.	REVISED
TOWN OF NEWBURGH - ORANGE CO.		
NEW YORK STATE		DRAWING NUMBER
		88-23-A66