

D/S Replacement Pylon Box and Post Wrap - 1 Required
Scale: N.T.S.

Sign Area 78.0 sq feet



- 1** Material Specs.
- Aluminum constructed formed cabinet painted Red PMS 485 C
 - Aluminum frame face painted Red PMS 485 C
 - Aluminum recessed face painted Red PMS 485 C
 - White LED lighting for halo illuminated w/ 3/16" white lexan lens

- 2**
- Aluminum pre-finished Dark Bronze coil returns
 - 3/16" white acrylic faces
 - 1" Duranodic bronze trim cap
 - White LED illumination

Colours:
Red 3m 3630-073
Dark Red Orca 030
Leaf to be Digitally printed

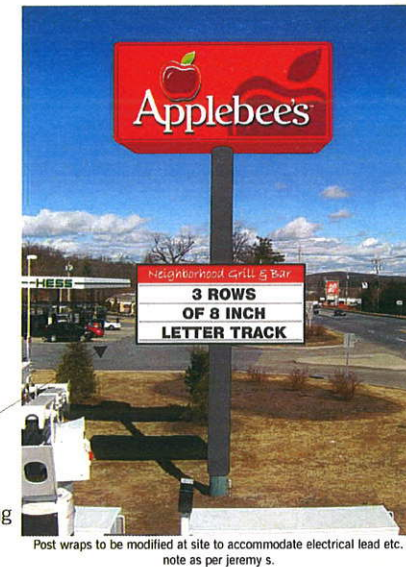
- 3**
- Opaque white "SM" applied to 1st surface

- 4**
- Orca030 vinyl applied to 1st surface

- 5**
- Aluminum constructed rolled post wraps and fasteners painted Duranodic GG 313E

- .063 Aluminum constructed flat cladding to wrap existing box painted Duranodic GG 313E

*See Structural exact details



Drawing No. APPL-PB012550.120A1

Multi Sign Drawing: APPL-MS012550

Electrical Requirements
120V

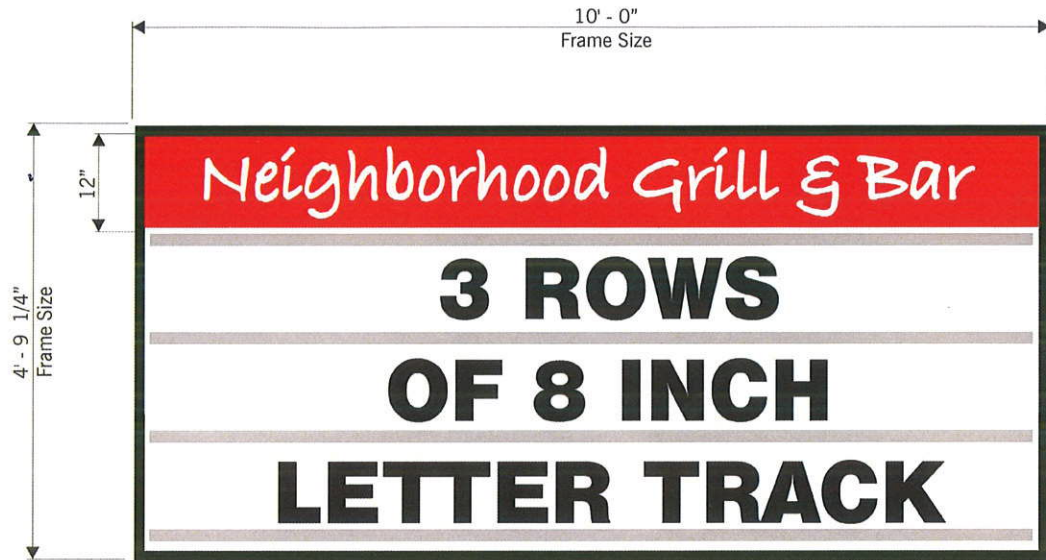
Graphic rendition is representative of specific signage. Colour / dimensional / material details should be verified using reference drawing specifications. Pride Signs Ltd. is not responsible for inherent variations caused by display and / or print variations.

- Preliminary Artwork
- Approved for Production

CLIENT APPROVAL
REVISION DATES:

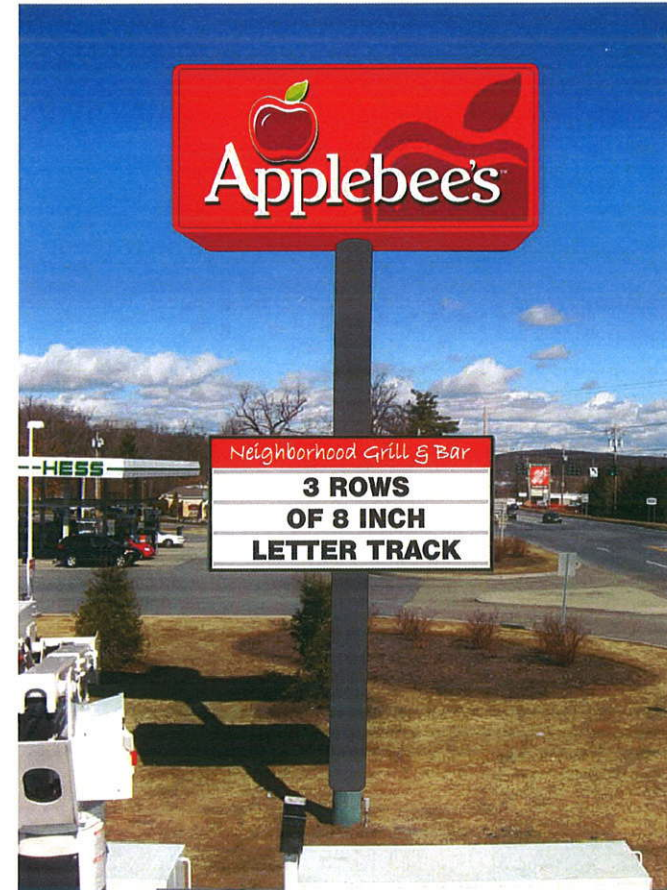
Replacement Face and Frame for Existing Pylon Box
Scale:N.T.S.

Sign Area 47.70 sq feet



Material Specifications

- Aluminum retainer painted Duranodic GG 313E
- 3/16" white acrylic faces w/ Red 3m 3630-073 applied to 1st surface and opaque blockout applied to second surface (to black out illumination of red area at night)
- Red o graph track applied to 1st surface



Post wraps to be modified at site to accommodate electrical lead etc. note as per jeremy s.

Drawing No. APPL-RF012550.000A1

Master Drawing: APPL-MS012550

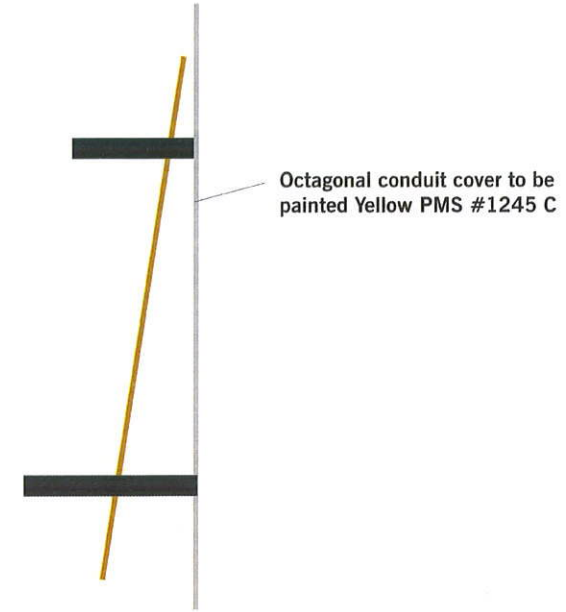
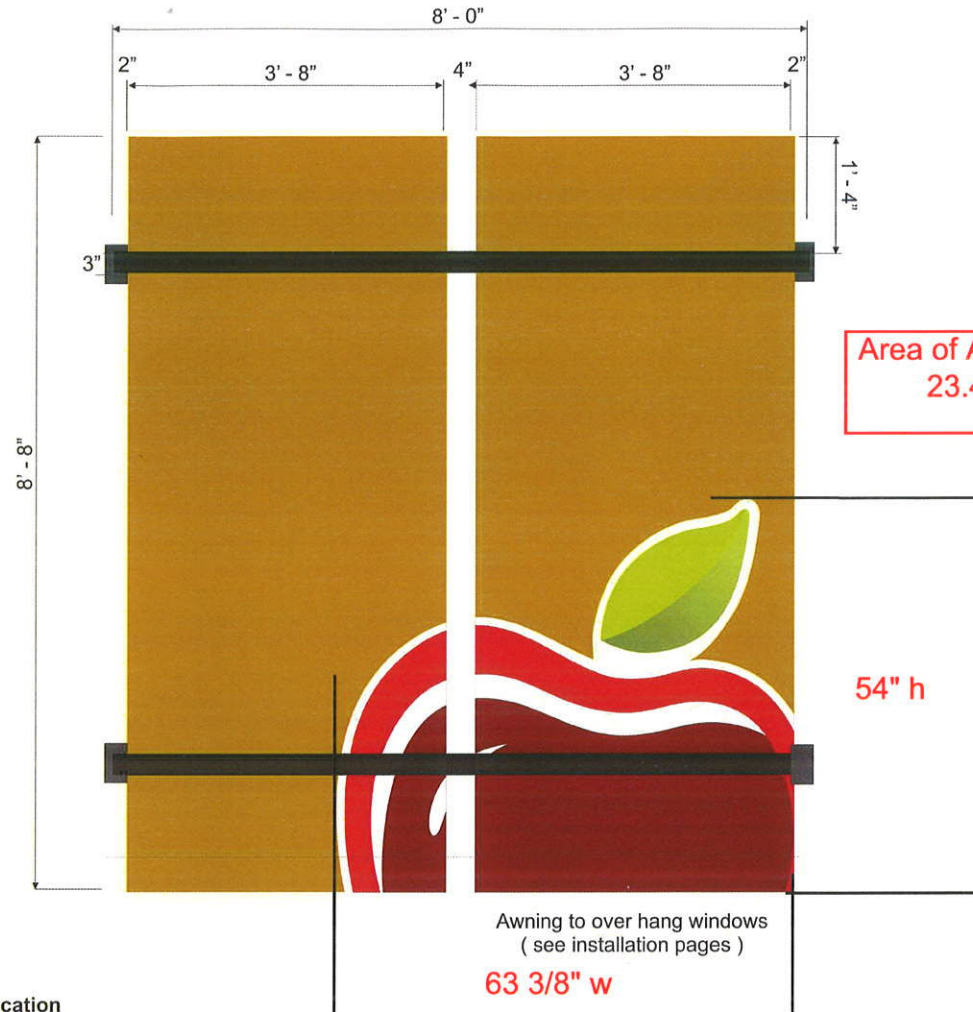
Graphic rendition is representative of specific signage. Colour / dimensions / material details should be verified using reference drawing specifications. Pride Signs Ltd. is not responsible for inherent variations caused by display and / or print variations.

- Preliminary Artwork
- Approved for Production

CLIENT APPROVAL
REVISION DATES:

Frontlit Illuminated Awnings - 3 Required

Scale: NTS



Material Specification

- Aluminum frame structure w/ aluminum awning skin (backs included) painted Yellow PMS 1245 C (Satin gloss finish)
- Aluminum tube painted black with extruded Pride LED light bar units to cast light onto awning skin
- Apple logo to be digitally printed vinyl

**All mounting hardware to be painted Black

Filename: APPL-DG070x0044.000A

Digital Specifications

Nested Digital Print Size:
Bleed Included In Overall Size

44"

70.2"

- Pantone 1797c
- Pantone 1815c
- Pantone 382c
- Pantone 371c

Digital Media

- White Translucent
- White Opaque
- Clear
- White Flex
- White Reflective

Resolution

- Recommended Media ICC Profile
- 300 DPI
- 200 DPI
- 150 DPI

Over Laminate

- Matte
- High Gloss

Cut/Contour Included

- Yes
- No

Drawing No. APPL-AW104X0096.1201

Electrical Requirements

120V

Graphic rendition is representative of specific signage. Colour / dimensional / material details should be verified using reference drawing specifications. Pride Signs Ltd. is not responsible for inherent variations caused by display and / or print variations.

- Preliminary Artwork
- Approved for Production

CLIENT APPROVAL



PRIDE SIGNS

THIS ARTWORK IS THE PROPERTY OF PRIDE SIGNS INC. AND MAY NOT BE USED IN SINGLE OR IN PART WITHOUT WRITTEN CONSENT FROM PRIDE SIGNS INC. ©2011



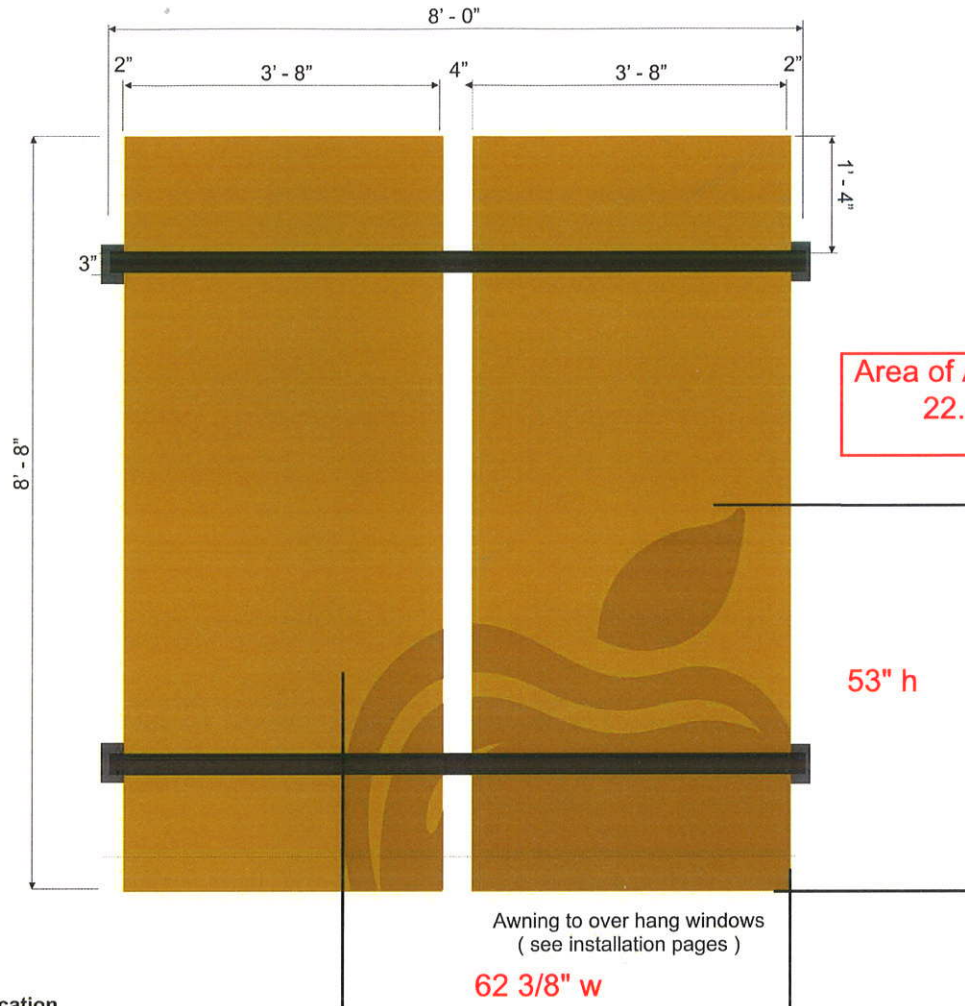
255 PINEBUSH ROAD CAMBRIDGE ONTARIO CANADA TEL: 519.622.4040 FAX: 519.622.4031 WWW.PRIDESIGNS.COM

Applebee's

DRAWN BY: B. Hardy
DATE: July 28, 2011

Frontlit Illuminated Awnings - 6 Required

Scale: NTS



Area of Apple graphic
22.40 sq feet

53" h

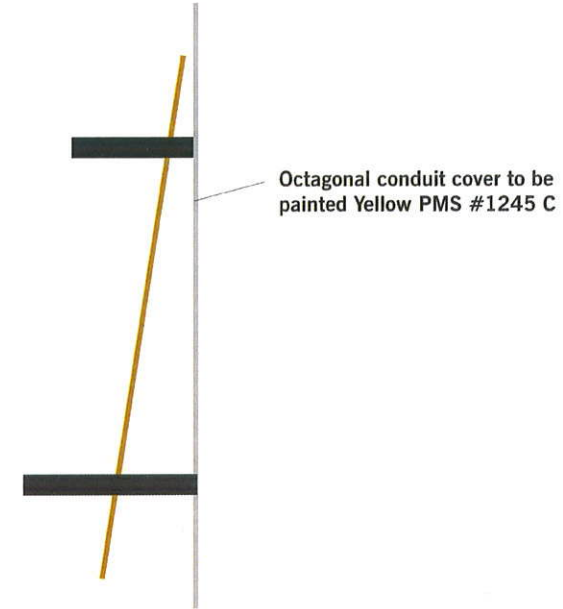
Awning to over hang windows
(see installation pages)

62 3/8" w

Material Specification

- *Aluminum frame structure w/ aluminum awning skin (backs included) painted Yellow PMS 1245 C (Satin gloss finish)
- *Aluminum tube painted black with extruded Pride LED light bar units to cast light onto awning skin
- *Apple logo to be digitally printed vinyl

**All mounting hardware to be painted Black



Octagonal conduit cover to be painted Yellow PMS #1245 C

Digital Specifications		Filename: APPL-DG068x0044.000B
Nested Digital Print Size: Bleed Included In Overall Size		
<input type="checkbox"/> White Translucent <input checked="" type="checkbox"/> White Opaque <input type="checkbox"/> Clear <input type="checkbox"/> White Flex <input type="checkbox"/> White Reflective		
Resolution		
<input checked="" type="checkbox"/> Recommended Media ICC Profile <input type="checkbox"/> 300 DPI <input type="checkbox"/> 200 DPI <input type="checkbox"/> 150 DPI		
Over Laminate		
<input checked="" type="checkbox"/> Matte <input type="checkbox"/> High Gloss		
Cut/Contour Included		
<input checked="" type="checkbox"/> Yes <input type="checkbox"/> No		
<input checked="" type="checkbox"/> Pantone 132 C		

Drawing No. APPL-AW104X0096.120H

Electrical Requirements

120V

Graphic rendition is representative of specific signage. Colour / dimensional / material details should be verified using reference drawing specifications. Pride Signs Ltd. is not responsible for inherent variations caused by display and / or print variations.

- Preliminary Artwork
- Approved for Production

CLIENT APPROVAL



PRIDE SIGNS

THIS ARTWORK IS THE PROPERTY OF PRIDE SIGNS INC. AND MAY NOT BE USED IN WHOLE OR IN PART WITHOUT WRITTEN CONSENT FROM PRIDE SIGNS INC. ©2011



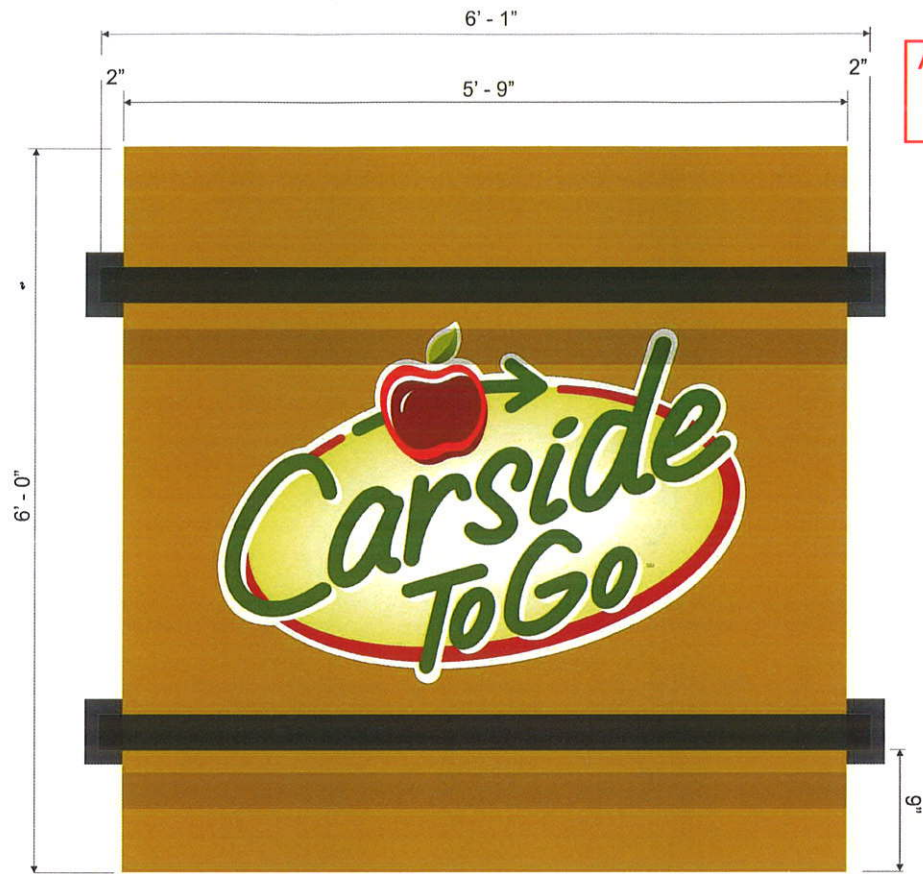
255 PINEBUSH ROAD CAMBRIDGE ONTARIO CANADA TEL: 519.622.4040 FAX: 519.622.4031 WWW.PRIDESIGNS.COM

Applebee's

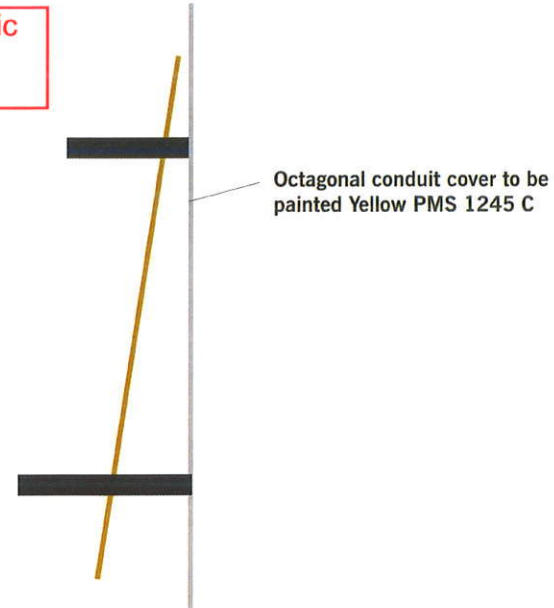
DRAWN BY: B. Hardy
DATE: July 28, 2011

Frontlit Illuminated Awnings - 1 Required

Scale: NTS



Area of Carside To Go graphic
14.33 sq feet



Material Specification

- Aluminum frame structure w/ aluminum awning skin painted Yellow pms 1245 c (Satin gloss finish)
- Aluminum tube painted black with extruded Pride LED light bar units to cast light onto awning skin
- Opaque digital image applied to awning skin

**All mounting hardware to be painted Black

Digital Specifications Filename: APPL-DG038X0055.000A

Nested Digital Print Size:
Bleed Included In Overall Size

55" Printed Size
37.5/8" Printed Size

Digital Media
<input type="radio"/> White Translucent
<input checked="" type="radio"/> White Opaque
<input type="radio"/> Clear
<input type="radio"/> White Flex
<input type="radio"/> White Reflective
Resolution
<input checked="" type="radio"/> Recommended Media ICC Profile
<input type="radio"/> 300 DPI
<input type="radio"/> 200 DPI
<input type="radio"/> 150 DPI
Over Laminate
<input checked="" type="radio"/> Matte
<input type="radio"/> High Gloss
Cut/Contour Included
<input checked="" type="radio"/> Yes
<input type="radio"/> No

Drawing No.
APPL-AW072X0073.120C

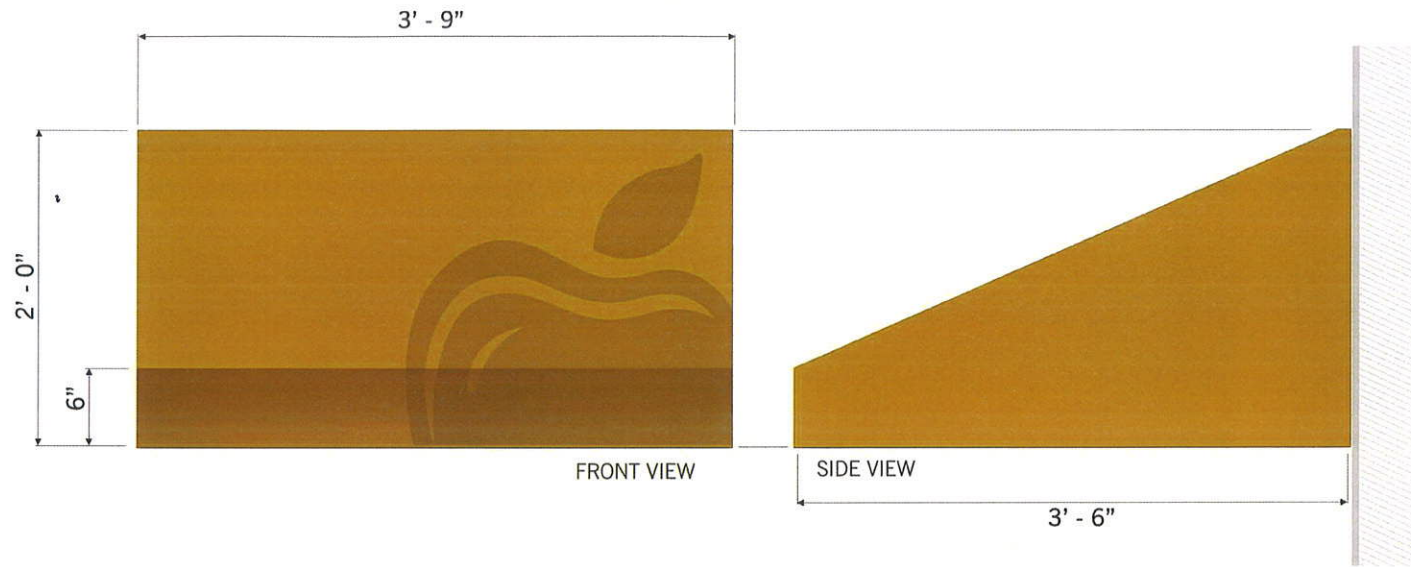
Electrical Requirements
120V

Graphic rendition is representative of specific signage. Colour / dimensional / material details should be verified using reference drawing specifications. Pride Signs Ltd. is not responsible for inherent variations caused by display and / or print variations.

Preliminary Artwork
 Approved for Production

CLIENT APPROVAL
REVISION DATES:
Oct. 20, 2011 B.H

Area of Apple graphic
3.99 sq feet



Material Specs.
 • Aluminum constructed awning frame Yellow PMS 1245c (low gloss clear coat)
 • Aluminum awning skin painted Yellow PMS 1245c (low gloss clear coat)
 Leaf graphic to be opaque digital image

Open Underside

Digital Specifications Filename: **APPL-DG023X0025.000C**

Nested Digital Print Size:
Bleed Included In Overall Size

Yellow pms 132c

Digital Media	
<input type="radio"/>	White Translucent
<input checked="" type="radio"/>	White Opaque
<input type="radio"/>	Clear
<input type="radio"/>	White Flex
<input type="radio"/>	White Reflective

Resolution	
<input checked="" type="radio"/>	Recommended Media ICC Profile
<input type="radio"/>	300 DPI
<input type="radio"/>	200 DPI
<input type="radio"/>	150 DPI

Over Laminate	
<input checked="" type="radio"/>	Matte
<input type="radio"/>	High Gloss

Cut/Contour Included	
<input checked="" type="radio"/>	Yes
<input type="radio"/>	No

Drawing No.
APPL-AW024X0045.000C

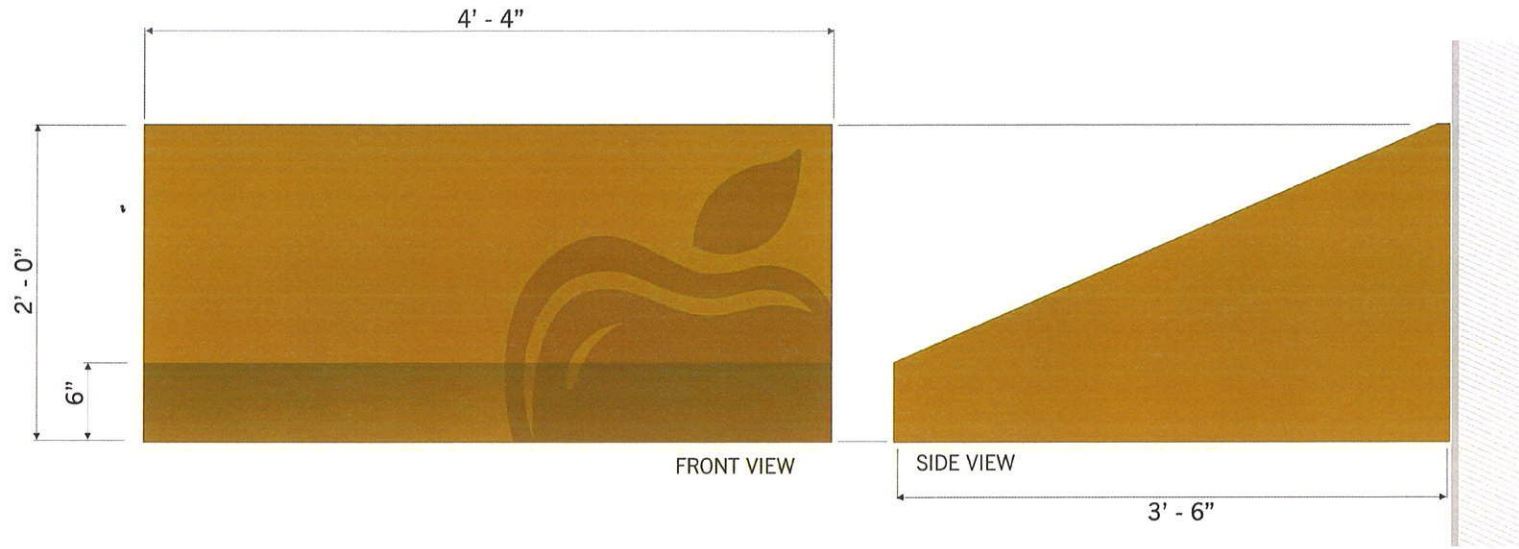
Multi Sign Drawing:

Graphic rendition is representative of specific signage. Colour / dimensional / material details should be verified using reference drawing specifications. Pride Signs Ltd. is not responsible for inherent variations caused by display and/or print variations.

Preliminary Artwork
 Approved for Production

CLIENT APPROVAL
 REVISION DATES:

Area of Apple graphic
3.99 sq feet



Material Specs.
 • Aluminum constructed awning frame Yellow PMS 1245c (low gloss clear coat)
 • Aluminum awning skin painted Yellow PMS 1245c (low gloss clear coat)
 Leaf graphic to be opaque digital image

Open Underside

Digital Specifications Filename: **APPL-DG023X0025.000C**

Nested Digital Print Size:
Bleed Included In Overall Size

Yellow pms 132c

<p>Digital Media</p> <p><input type="radio"/> White Translucent</p> <p><input checked="" type="radio"/> White Opaque</p> <p><input type="radio"/> Clear</p> <p><input type="radio"/> White Flex</p> <p><input type="radio"/> White Reflective</p> <p>Resolution</p> <p><input checked="" type="radio"/> Recommended Media ICC Profile</p> <p><input type="radio"/> 300 DPI</p> <p><input type="radio"/> 200 DPI</p> <p><input type="radio"/> 150 DPI</p> <p>Over Laminate</p> <p><input checked="" type="radio"/> Matte</p> <p><input type="radio"/> High Gloss</p> <p>CutContour Included</p> <p><input checked="" type="radio"/> Yes</p> <p><input type="radio"/> No</p>
--

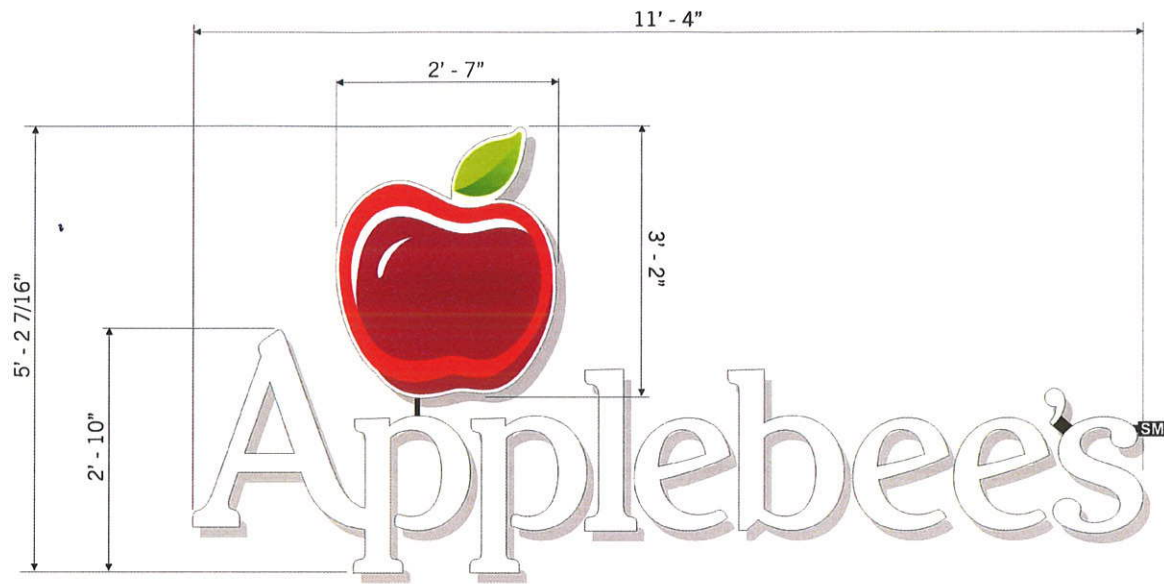
Graphic rendition is representative of specific signage. Colour / dimensional / material details should be verified using reference drawing specifications. Pride Signs Ltd. is not responsible for inherent variations caused by display and / or print variations.

- Preliminary Artwork
- Approved for Production

CLIENT APPROVAL
REVISION DATES:

Channel Letters and Logo

Sign Area 40.10 sq feet



5" Deep Letters



Material Specs.

- Aluminum pre-finished Dark Bronze coil returns
- 3/16" white LD 2447 acrylic faces
- 1" Duranodic bronze trim cap
- White LED illumination

SM Panel

- Flat aluminum panel painted Duranodic Bronze GG 313E with opaque white "SM" vinyl applied to 1st surface (Panel to be mounted to letter "S")

- Aluminum electrical jump painted Duranodic Bronze GG 313E

Digital Specifications Filename: APPL-CL009X0009.000A

Nested Digital Print Size:
Bleed Included In Overall Size

Digital Media

- White Translucent
- White Opaque
- Clear
- White Flex
- White Reflective

Resolution

- Recommended Media ICC Profile
- 300 DPI
- 200 DPI
- 150 DPI

Over Laminate

- Matte
- High Gloss

Cut/Contour Included

- Yes
- No

Drawing No. **APPL-CL062X0136.120A**

Color Specs.

- Logo Vinyl:**
- White
 - #3630-73 Dark Red
 - ORACAL #030 Dark Red

Electrical Requirements

120V

Graphic rendition is representative of specific signage. Colour, dimensional / material details should be verified using reference drawing specifications. Pride Signs Ltd. is not responsible for inherent variations caused by display and /or print variations.

- Preliminary Artwork
- Approved for Production
June 22, 2011 B.H

CLIENT APPROVAL
REVISION DATES:



PRIDE SIGNS

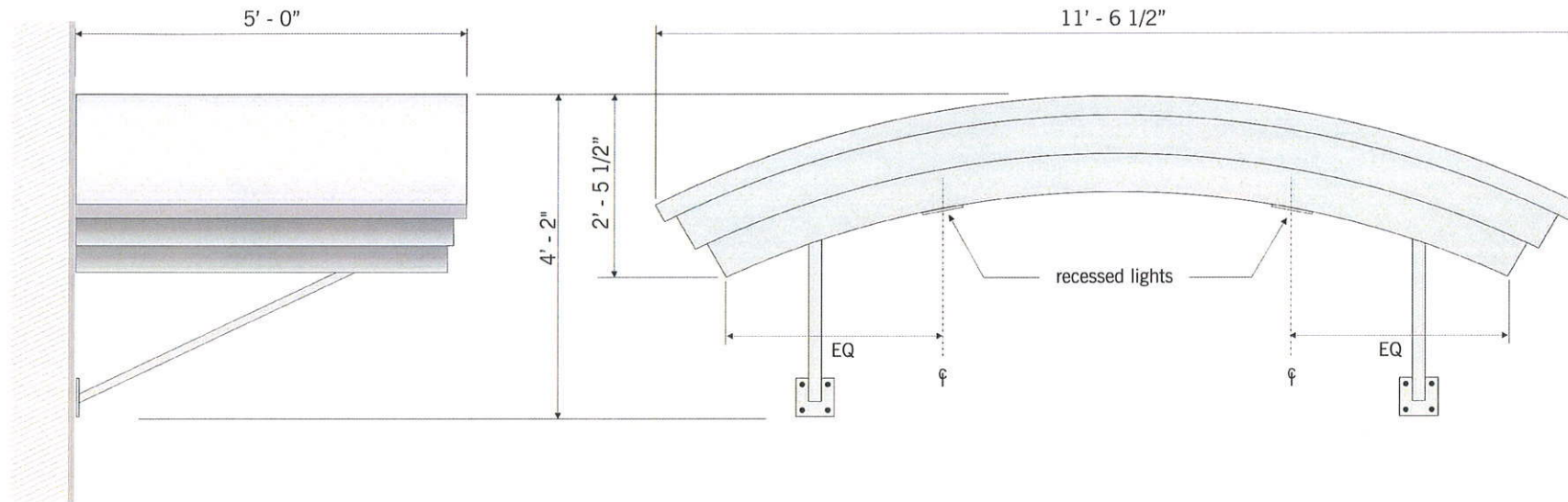
THIS ARTWORK IS THE PROPERTY OF PRIDE SIGNS INC. AND MAY NOT BE USED IN WHOLE OR IN PART WITHOUT WRITTEN CONSENT FROM PRIDE SIGNS INC. ©2011



255 PINEBUSH ROAD CAMBRIDGE ONTARIO CANADA TEL: 519.622.4040 FAX: 519.622.4031 WWW.PRIDESIGNS.COM

Applebee's

DRAWN BY: B. Hardy
DATE: June 8, 2011



Material Specs.

- Aluminum constructed formed awning structure painted grip guard brushed aluminum
- Aluminum mounting plate, tube supports and fasteners painted grip guard brushed aluminum

Electrical Requirements

120V

Graphic rendition is representative of specific signage. Colour / dimensional / material details should be verified using reference drawing specifications. Pride Signs Ltd. is not responsible for inherent variations caused by display and / or print variations.

- Preliminary Artwork
- Approved for Production

CLIENT APPROVAL

REVISION DATES:
Nov. 3, 2011 B.H.



PRIDE SIGNS

THIS ARTWORK IS THE PROPERTY OF PRIDE SIGNS INC. AND MAY NOT BE USED IN WHOLE OR IN PART WITHOUT WRITTEN CONSENT FROM PRIDE SIGNS INC. ©2011



255 PINEBUSH ROAD CAMBRIDGE ONTARIO CANADA TEL: 519.622.4040 FAX: 519.622.4031 WWW.PRIDESIGNS.COM

Applebee's

DRAWN BY: B. Hardy
DATE: Sept. 28, 2011

Non-Illuminated Routed Substrate
Scale: N.T.S.



Material Specifications

- White pre-coated aluminum panel
- Digitally printed graphics applied to surface

Digital Specifications Filename: APPL-DG020X0020.000A

Nested Digital Print Size: Bleed Included In Overall Size 	Digital Media <input type="radio"/> White Translucent <input checked="" type="radio"/> White Opaque <input type="radio"/> Clear <input type="radio"/> White Flex <input type="radio"/> White Reflective
	Resolution <input checked="" type="radio"/> Recommended Media ICC Profile <input type="radio"/> 300 DPI <input type="radio"/> 200 DPI <input type="radio"/> 150 DPI
	Over Laminate <input checked="" type="radio"/> Matte <input type="radio"/> High Gloss
	CutContour Included <input checked="" type="radio"/> Yes <input type="radio"/> No

Drawing No. **APPL-RS020X0020.000A**

Graphic rendition is representative of specific signage. Colour / dimensional / material details should be verified using reference drawing specifications. Pride Signs Ltd. is not responsible for inherent variations caused by display and / or print variations.

Preliminary Artwork
 Approved for Production
 June 22, 2011 B.H.

CLIENT APPROVAL
 REVISION DATES:
 OCT. 8, 2010 B.H.



Parking Panels - 4 Required
Scale: N.T.S.

Sign Area 2.32 sq feet



Digital Specifications Filename: APPL-DG012550.000A1

Nested Digital Print Size:
Bleed Included In Overall Size

Digital Media

- White Translucent
- White Opaque
- Clear
- White Flex
- White Reflective

Resolution

- Recommended Media ICC Profile
- 300 DPI
- 200 DPI
- 150 DPI

Over Laminate

- Matte
- High Gloss

Cut/Contour Included

- Yes
- No

Material Specifications

- White pre-coated aluminum panels
- Digitally printed graphics applied to surface

Phone number type face to be:
HeliumRR Medium

Drawing No. **APPL-RS012550.000A1**

Master Drawing: **APPL-MS012550**

Graphic rendition is representative of specific signage. Colour, dimensional / material details should be verified using reference drawing specifications. Pride Signs Ltd. is not responsible for inherent variations caused by display and / or print variations.

- Preliminary Artwork
- Approved for Production

CLIENT APPROVAL
REVISION DATES:



PRIDE SIGNS

THIS ARTWORK IS THE PROPERTY OF PRIDE SIGNS INC. AND MAY NOT BE USED IN WHOLE OR IN PART WITHOUT WRITTEN CONSENT FROM PRIDE SIGNS INC. ©2011



255 PINEBUSH ROAD CAMBRIDGE ONTARIO CANADA TEL: 519.622.4040 FAX: 519.622.4031 WWW.PRIDESIGNS.COM

Newburgh, NY



DRAWN BY: B. Hardy
DATE: March 20, 2012



Electrical Requirements

120V

Graphic rendition is representative of specific signage. Colour / dimensional / material details should be verified using reference drawing specifications. Pride Signs Ltd. is not responsible for inherent variations caused by display and / or print variations.

- Preliminary Artwork
- Approved for Production

CLIENT APPROVAL

REVISION DATES:



PRIDE SIGNS

THIS ARTWORK IS THE PROPERTY OF PRIDE SIGNS INC. AND MAY NOT BE USED IN WHOLE OR IN PART WITHOUT WRITTEN CONSENT FROM PRIDE SIGNS INC. ©2011

255 PINEBUSH ROAD CAMBRIDGE ONTARIO CANADA TEL: 519.622.4040 FAX: 519.622.4031 WWW.PRIDESIGNS.COM



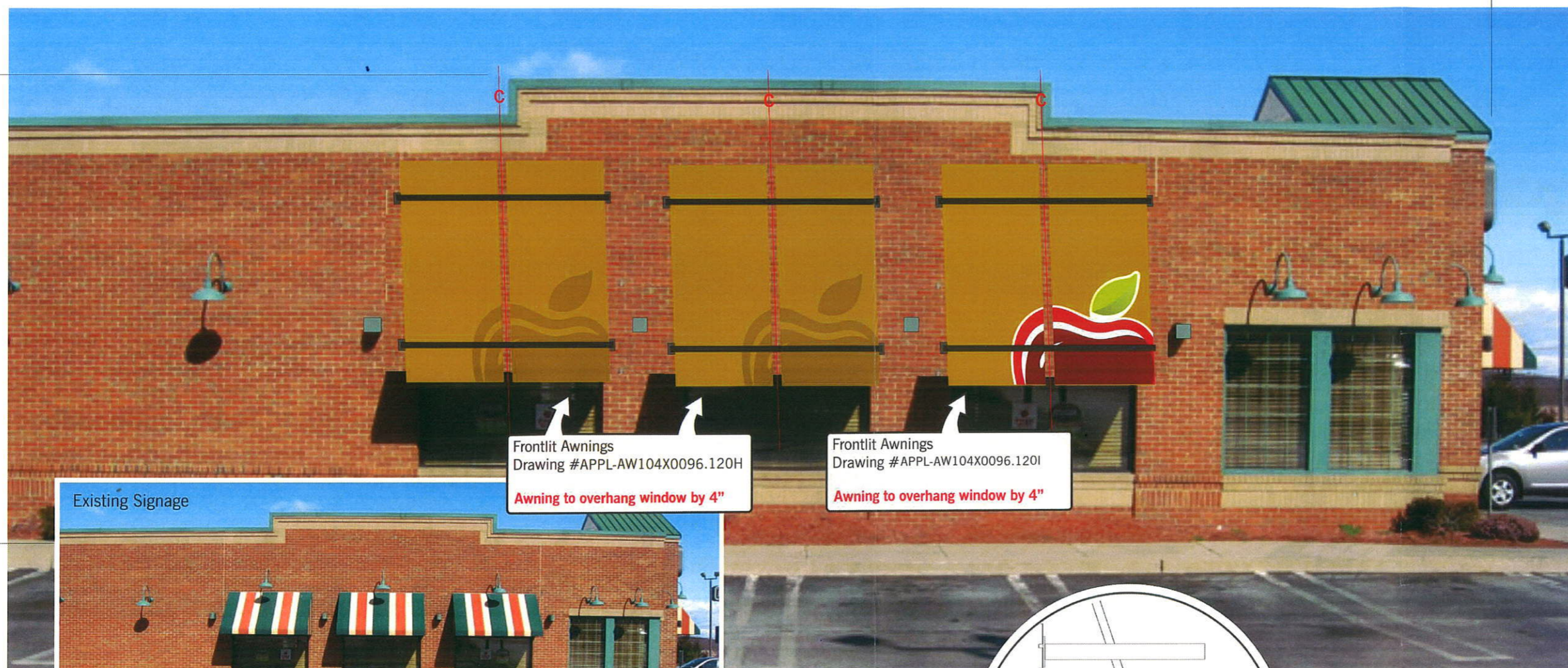
Newburgh, NY



DRAWN BY: B. Hardy
DATE: March 20, 2012

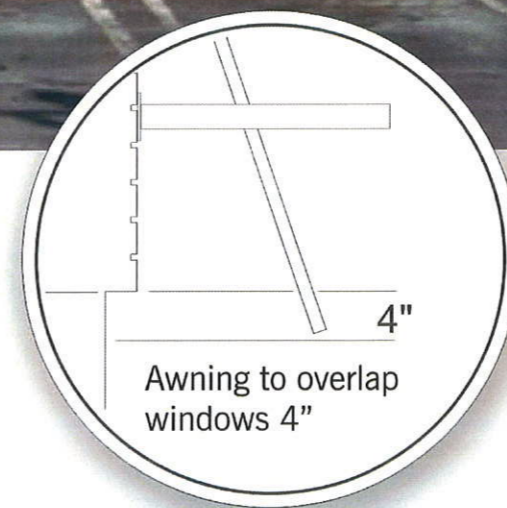
91' - 5"

17' - 5"



Frontlit Awnings
Drawing #APPL-AW104X0096.120H
Awning to overhang window by 4"

Frontlit Awnings
Drawing #APPL-AW104X0096.120I
Awning to overhang window by 4"



Electrical Requirements

120V

Graphic rendition is representative of specific signage. Colour / dimensional / material details should be verified using reference drawing specifications. Pride Signs Ltd. is not responsible for inherent variations caused by display and / or print variations.

- Preliminary Artwork
- Approved for Production

CLIENT APPROVAL

REVISION DATES:



PRIDE SIGNS

THIS ARTWORK IS THE PROPERTY OF PRIDE SIGNS INC. AND MAY NOT BE USED IN WHOLE OR IN PART WITHOUT WRITTEN CONSENT FROM PRIDE SIGNS INC. ©2011

255 PINEBUSH ROAD CAMBRIDGE ONTARIO CANADA TEL: 519.622.4040 FAX: 519.622.4031 WWW.PRIDESIGNS.COM



Newburgh, NY

Applebee's

DRAWN BY: B. Hardy
DATE: March 20, 2012



Electrical Requirements
120V

Graphic rendition is representative of specific signage. Colour / dimensional / material details should be verified using reference drawing specifications. Pride Signs Ltd. is not responsible for inherent variations caused by display and / or print variations.

- Preliminary Artwork
- Approved for Production

CLIENT APPROVAL
REVISION DATES:

Drawing No.
APPL-SP012550.REAR

Multi Sign Drawing:
APPL-MS012550



Electrical Requirements
120V

Graphic rendition is representative of specific signage. Colour / dimensional / material details should be verified using reference drawing specifications. Pride Signs Ltd. is not responsible for inherent variations caused by display and / or print variations.

- Preliminary Artwork
- Approved for Production

CLIENT APPROVAL
REVISION DATES: