



Atlantic Sign Company

2328 Florence Avenue
Cincinnati, OH 45206

(513) 241-6775

Fax (513) 241-5060

FILE NAME
WO# 100428-R5

CUSTOMER
SMOOTHIE KING

LOCATION THE SHOPPES AT UNION
SQUARE, NY 300, NEWBURGH, NY

DRAWN BY
STUART HUGHES / KS

DATE PAGE
5/23/19 12 OF 16

SALES REP.
AMBER CASSEDY

G DRIVE-THRU CANOPY RENDERING

QTY: 1

Designed Per IBC 2015 NY Edition

NYS Building Code 2016

Wind Loads	
Ultimate Design Wind Speed	115 mph
Nominal Design Wind Speed	89.1 mph
Risk Cat.	II
(3-sec Peak Gust MPH*)	
Wind Importance Factor	I = 1.00
Wind Exposure	C
Gust Factor	0.85

Snow Loads	
Ground Snow Load	Pg= 30 psf
Snow Exposure Factor	Ce= 1.0
Snow Load Importance	Is= 1.1
Thermal Factor	Ct= 1.2

Exterior components designed in accordance with applicable provisions of the ASCE 7-10



S26 OUTDOOR DRIVE THRU ALLINONE 08-18-17 TAF



GC to provide
footer as
designed by
SK architect
and set
anchor bolts"



MURDOCH ENGINEERING
SIGN STRUCTURE PROFESSIONALS

2 HUMMINGBIRD CT.
HOWELL, NJ 07731
(973) 870-8215

7/16/2019

Jere Murdoch, PE
Professional Engineer
NYPE Lic. #089862

APPROVED



Atlantic Sign Company

2328 Florence Avenue
Cincinnati, OH 45206

(513) 241-6775

Fax (513) 241-5060

FILE NAME
WO# 100428-R5

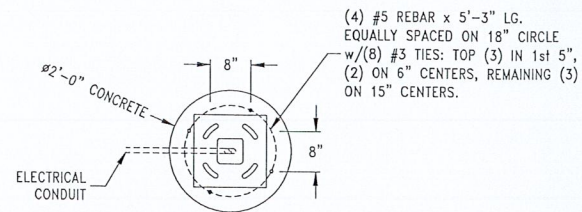
CUSTOMER
SMOOTHIE KING

LOCATION THE SHOPPES AT UNION
SQUARE, NY 300, NEWBURGH, NY

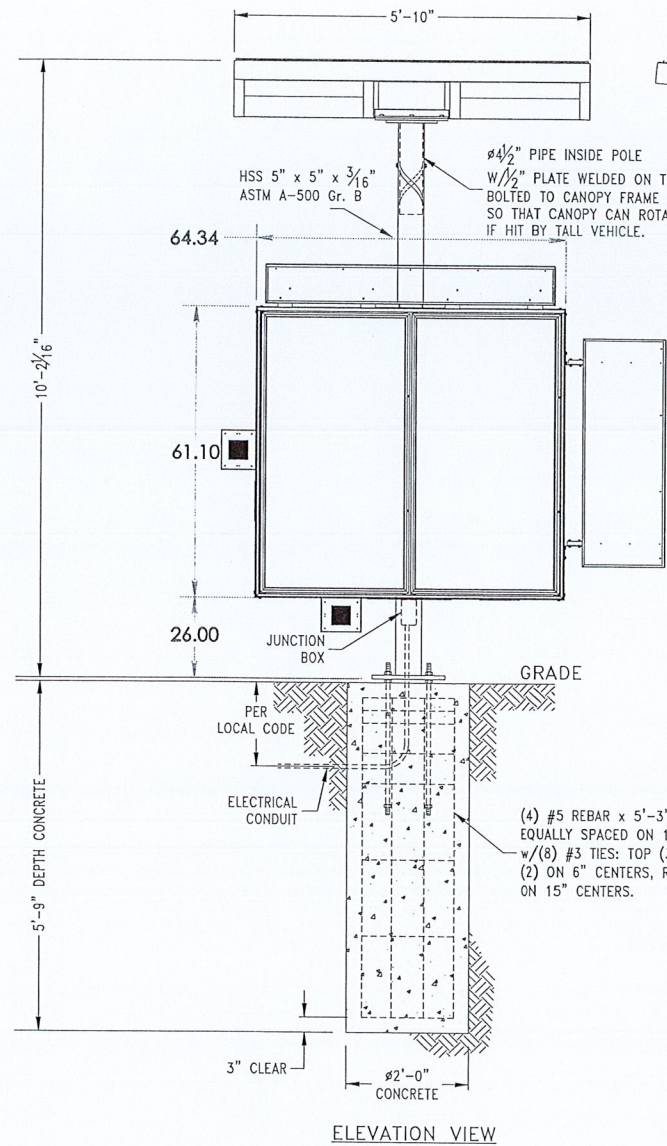
DRAWN BY
STUART HUGHES / KS

DATE PAGE
5/23/19 13 OF 16

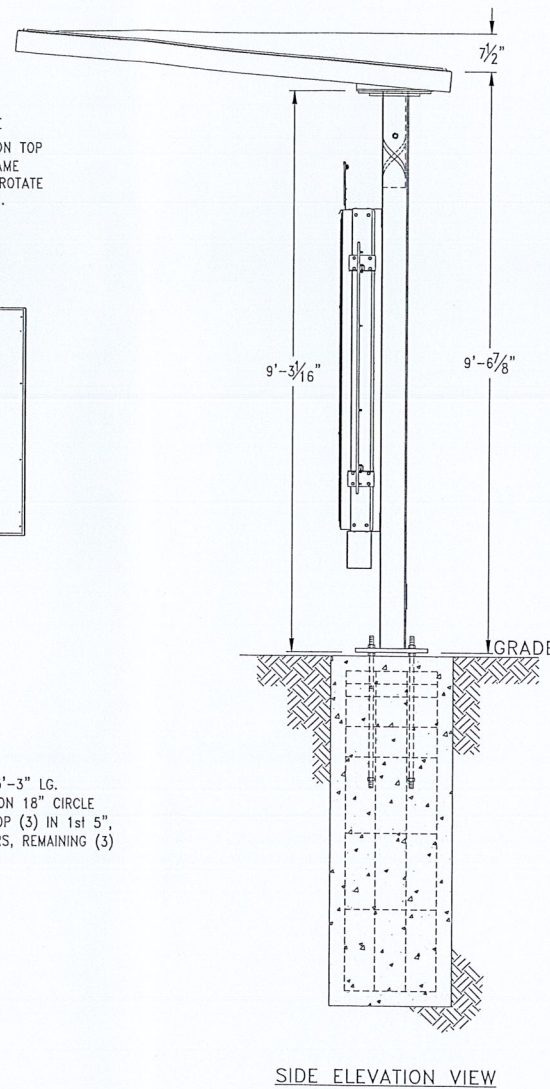
SALES REP.
AMBER CASSEDY



PLAN VIEW
QTY. CONCRETE: 0.7 CU. YDS.



ELEVATION VIEW



SIDE ELEVATION VIEW

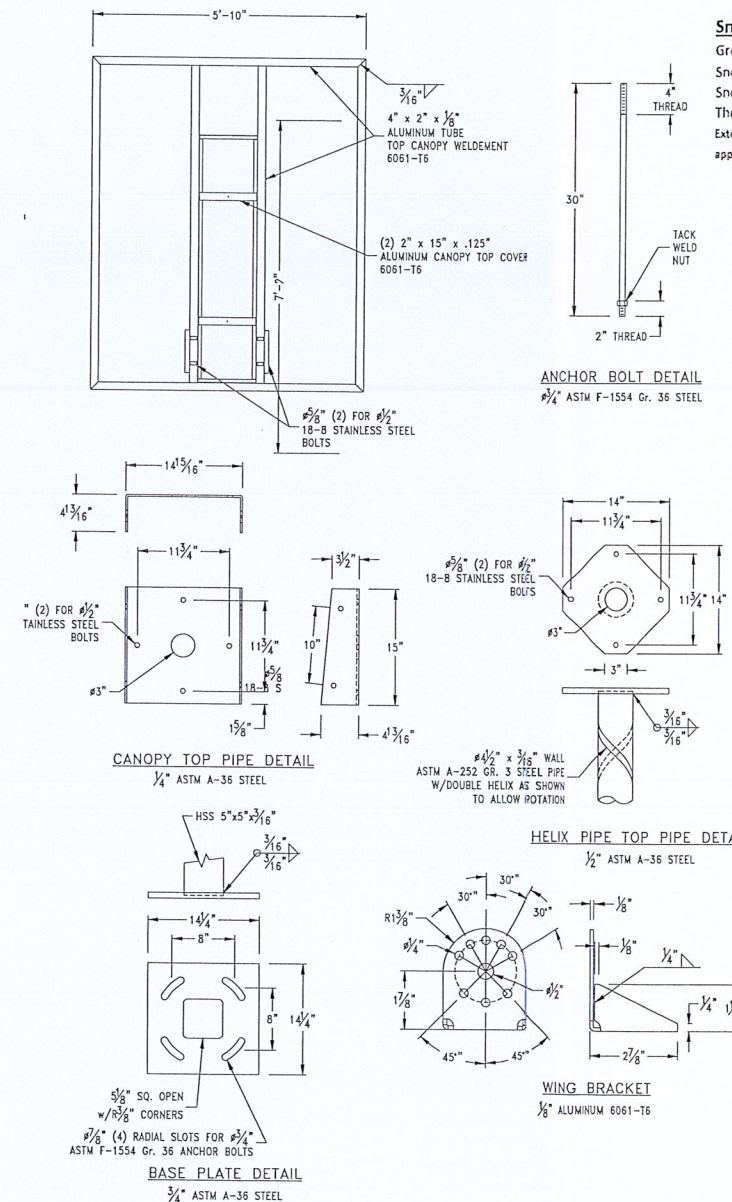
DRIVE-THRU CANOPY DETAIL

QTY: 1

Designed Per IBC 2015 NY Edition
NYS Building Code 2015

Wind Loads	
Ultimate Design Wind Speed	115 mph
Nominal Design Wind Speed	89.1 mph
Risk Cat.	II
(3-sec Peak Gust MPH*)	
Wind Importance Factor	I = 1.00
Wind Exposure	C
Gust Factor	0.85

Snow Loads	
Ground Snow Load	Pg= 30 psf
Snow Exposure Factor	Ce= 1.0
Snow Load Importance	Is= 1.1
Thermal Factor	Ct= 1.2
Exterior components designed in accordance with applicable provisions of the ASCE 7-10	



- FOUNDATION DESIGN & ENGINEERING NOTES:**
- Concrete shall have a minimum compressive strength of 3000 PSI at 28 days.
 - Reinforcing steel shall be ASTM A-615 Gr. 60.
 - Caisson footing designed using a soil bearing force of 200 PSF per foot Lateral. If these soil condition does not exist, it is the Erector's responsibility to have a new base designed for the existing soil conditions by a Licensed Engineer.
 - Anchor bolts shall be ASTM F-1554 Gr. 36 steel.
 - All electrical work to be done according to the NEC and Local Code.

DESIGN WIND LOAD:
Based on the 2012 International Building Code (ASCE 7-10) using Risk Category II, Exposure C and 115 mph wind speed.

DESIGN SNOW LOAD:
Based on Ground Snow Loads.

SEE DETAIL VIEWS - SHEET 2



MURDOCH ENGINEERING
SIGN STRUCTURE PROFESSIONALS

2 HUMMINGBIRD CT.
HOWELL, NJ 07731
(973) 570-8215

Jere Murdoch, PE
Professional Engineer
NY PE Lic. #089862

7/16/2019

APPROVED

GC to provide footer as designed by SK architect and set anchor bolts"

FILE NAME
WO# 100428-R5

CUSTOMER
SMOOTHIE KING

LOCATION THE SHOPPES AT UNION
SQUARE, NY 300, NEWBURGH, NY

DRAWN BY
STUART HUGHES / KS

DATE PAGE
5/23/19 14 OF 16

SALES REP.
AMBER CASSEDDY



MURDOCH ENGINEERING
SIGN STRUCTURE PROFESSIONALS

2 HUMMINGBIRD CT.
HOWELL, NJ 07731
(973) 570-8215

7/16/2019

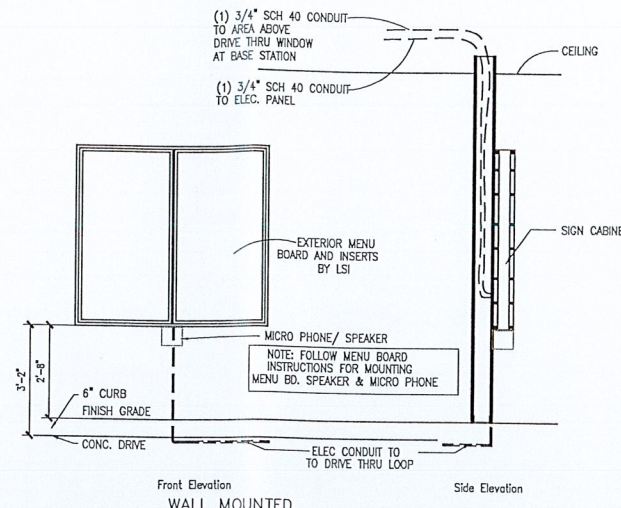
Jere Murdoch, PE
Professional Engineer
NY PE Lic. #089862

Designed Per IBC 2015 NY Edition
NYS Building Code 2016

Wind Loads
Ultimate Design Wind Speed 115 mph
Nominal Design Wind Speed 89.1 mph
Risk Cat. II
(3-Sec Peak Gust MPH*)
Wind Importance Factor I = 1.00
Wind Exposure C
Gust Factor 0.85

Snow Loads
Ground Snow Load Pg = 30 psf
Snow Exposure Factor Ce = 1.0
Snow Load Importance Is = 1.1
Thermal Factor Ct = 1.2

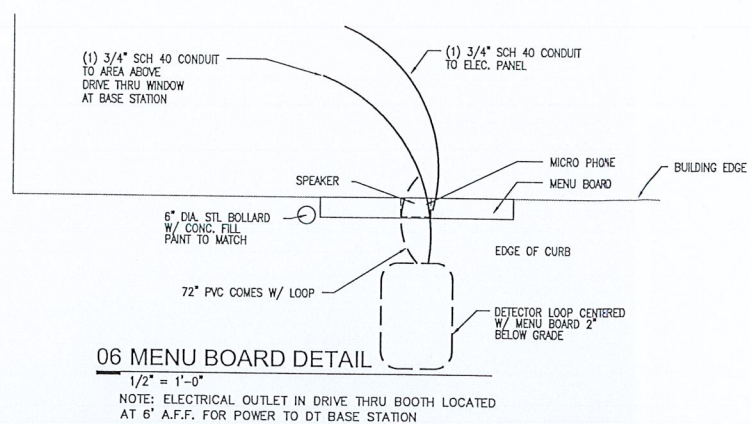
Exterior components designed in accordance with applicable provisions of the ASCE 7-10



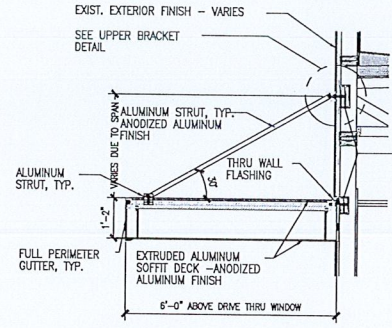
03 EXTERIOR MENU BOARD ELEVATION DETAIL
1/2" = 1'-0"

DRIVE THRU SCHEDULE

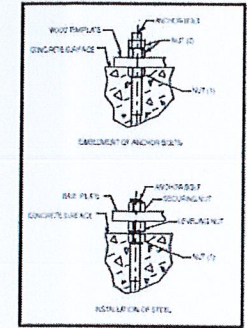
MARK	PROVIDE	INSTALL	DESCRIPTION
(A)	SEE	SEE	MENU BOARD (CONTACT JENNY @ HOWARD - 282-317-7711)
(B)	SEE	G.C.	MENU INSERT (DOES NOT INCLUDE ALL SMOOTHIE OPTIONS, BUT DOES INCLUDE TWO PROMOTIONAL GRAPHICS) (CONTACT JENNY @ HOWARD - 282-317-7711)
(C)	SEE	SEE	HME BUNDLE (HEADSETS, VEHICLE DETECTION) CONTACT CRAIG AT 770-308-1768
(D)	G.C.	G.C.	DRIVE THRU WINDOW-SEE DETAIL 5/A-9 CONTACT READY ACCESS AT 800-821-5045 FOR WINDOW ORDERS AND NATIONAL PRICING. FOR INSTALLATION DETAILS WEB SITE: WWW.READY-ACCESS.COM



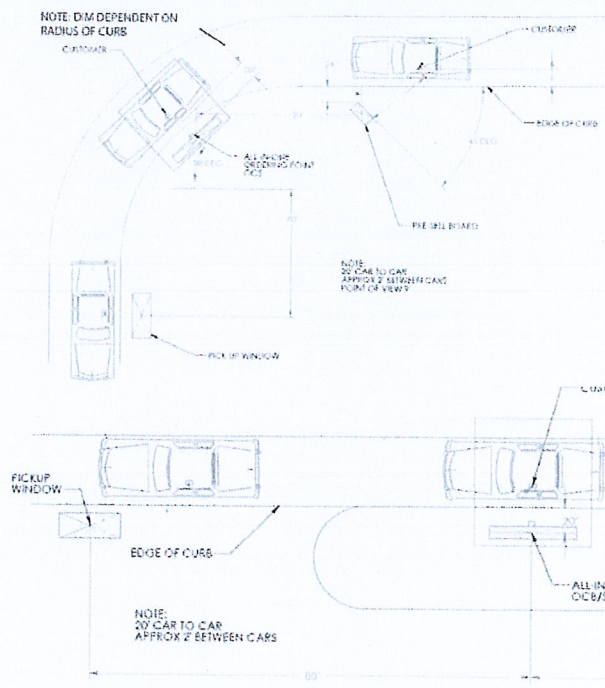
06 MENU BOARD DETAIL
1/2" = 1'-0"
NOTE: ELECTRICAL OUTLET IN DRIVE THRU BOOTH LOCATED AT 6\"/>



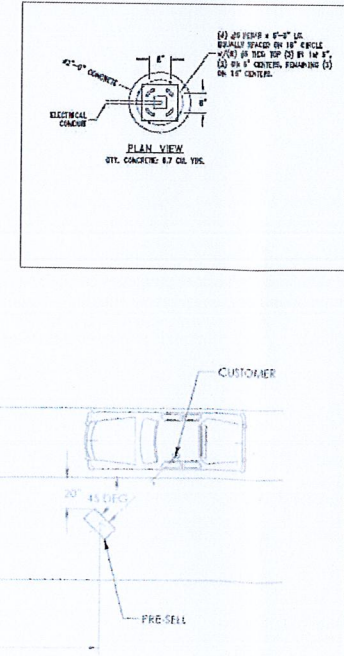
07 DRIVE THRU AWNING DETAIL
1/2" = 1'-0"



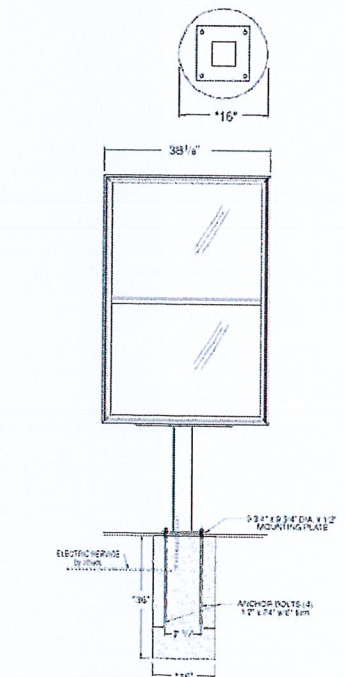
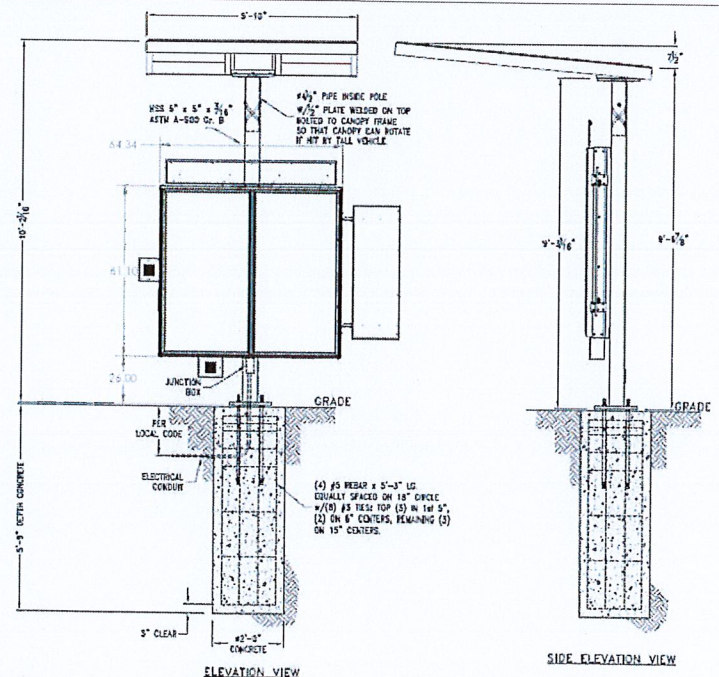
08 ANCHOR BOLT - PRE ORDER
1/2" = 1'-0"



02 TYP - DRIVE THRU MENU BOARD SET UP
1/2" = 1'-0"



05 EXTERIOR MENU BOARD ELEVATION DETAIL & ANCHOR BOLT
1/2" = 1'-0"



APPROVED

FILE NAME
WO# 100428-R5

CUSTOMER
SMOOTHIE KING

LOCATION THE SHOPPES AT UNION
SQUARE, NY 300, NEWBURGH, NY

DRAWN BY
STUART HUGHES / KS

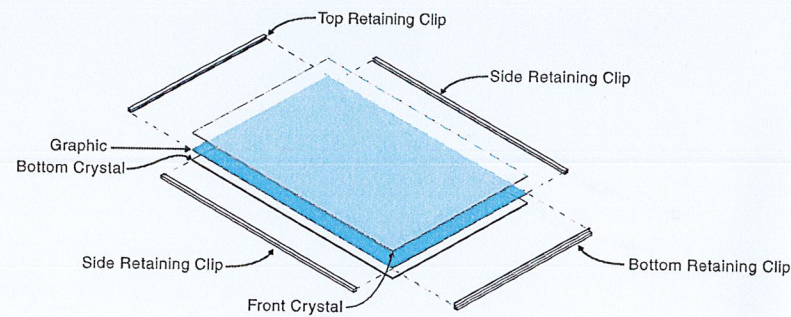
DATE PAGE
5/23/19 11 OF 16

SALES REP.
AMBER CASSEDY

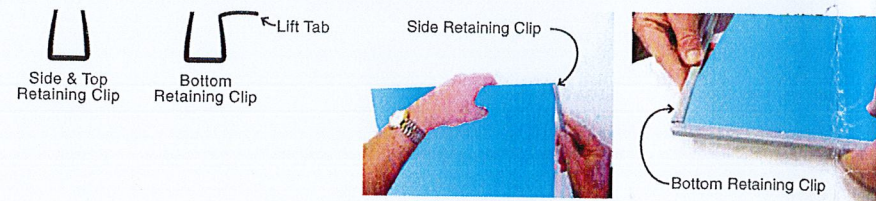
F DRIVE-THRU CANOPY GRAPHIC & MENU BOARD INSTALL

**Pre Sell
Menu Board
Graphic Replacement
Installation Guide**

- 1 Unlock and open the drive thru door. Remove the lift and drop panel from the board.
- 2 Remove all of the retaining clips from the edges of the graphic panel.
- 3 Lift off the front crystal and set aside. Remove the old graphic and set the new graphic on top of the backup crystal. Replace the top crystal.



- 4 Replace the two side retaining clips by starting at the top of the graphic panel and working your way down. Replace the top retaining clip. Replace the bottom retaining clip (clip with lift tab). Make sure all retaining clips are snug against the sides of the graphic panel.



- 5 Reinsert the graphic panel into the menu board. Close and lock the door.

GC to provide
footer as designed
by SK architect and set
anchor bolts"

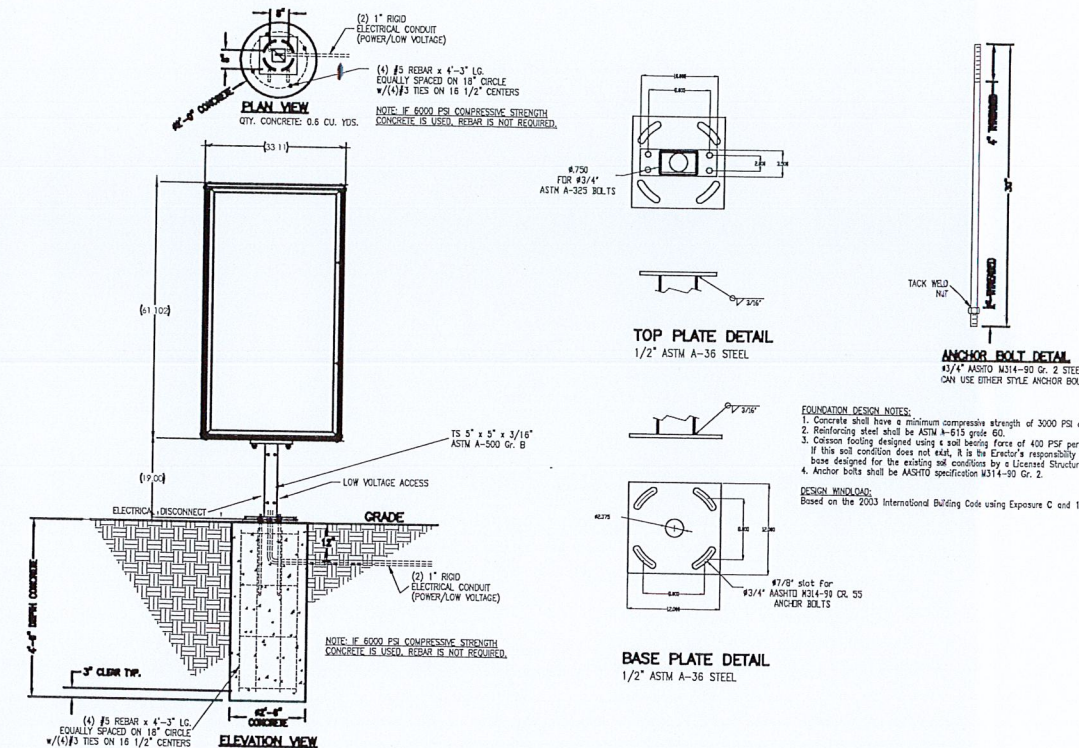
Designed Per IBC 2015 NY Edition
NYS Building Code 2016

Wind Loads	
Ultimate Design Wind Speed	115 mph
Nominal Design Wind Speed	89.1 mph
Risk Cat.	II
(3-sec Peak Gust MPH*)	
Wind Importance Factor	I = 1.00
Wind Exposure	C
Gust Factor	0.85

**Pre Sell
Menu Board
Installation Guide**

Snow Loads	
Ground Snow Load	Pg= 30 psf
Snow Exposure Factor	Ce= 1.0
Snow Load Importance	Is= 1.1
Thermal Factor	Ct= 1.2

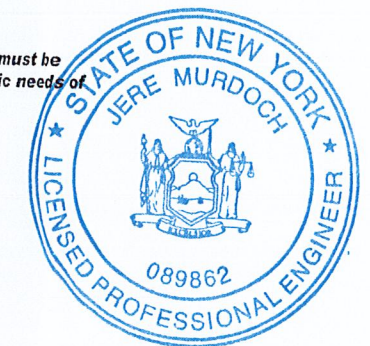
Exterior components designed in accordance with applicable provisions of the ASCE 7-10



*NOTE: These are approximate foundation measurements. The soil bearing capacity at the erection site must be considered when designing the foundation. The sign manufacturer is not able to predetermine the specific needs of each location. Consult a local engineer for design specifications.

*NOTE: This is a suggested plan. Local requirements may exceed this design. The contractor is responsible to verify this plan.

- 1 Dig hole to the desired length, width and depth. Use template provided and anchor bolts in the hole. Brace to prevent movement. Position conduit as shown. Fill hole with concrete.
- 2 Erect support structure. Make sure the electrical cover on the mounting steel is to the backside. Use a nut under plate to level. Secure with nut on top of plate.
- 3 Unpack the Pre Sell board. Remove (8) 3/8-16 x 1 1/2 bolts and washers on the bottom of the board. Do not discard.
- 4 Lift the Pre Sell board and position on support structure. Secure with the (8) 3/8-16 x 1 1/2 bolts and washers previously removed.
- 5 Remove the electrical cover on the mounting steel. Make all electrical connections in accordance with all local, state and federal codes. Test light the Pre Sell board before installing electrical cover on the mounting steel.



**MURDOCH
ENGINEERING**
SIGN STRUCTURE PROFESSIONALS

2 HUMMINGBIRD CT.
HOWELL, NJ 07731
(973) 570-8215

7/16/2019

Jere Murdoch, PE
Professional Engineer
NY PE Lic. #089862

APPROVED



Atlantic Sign Company

2328 Florence Avenue
Cincinnati, OH 45206

(513) 241-6775

Fax (513) 241-5060

FILE NAME
WO# 100428-R5

CUSTOMER
SMOOTHIE KING

LOCATION THE SHOPPES AT UNION
SQUARE, NY 300, NEWBURGH, NY

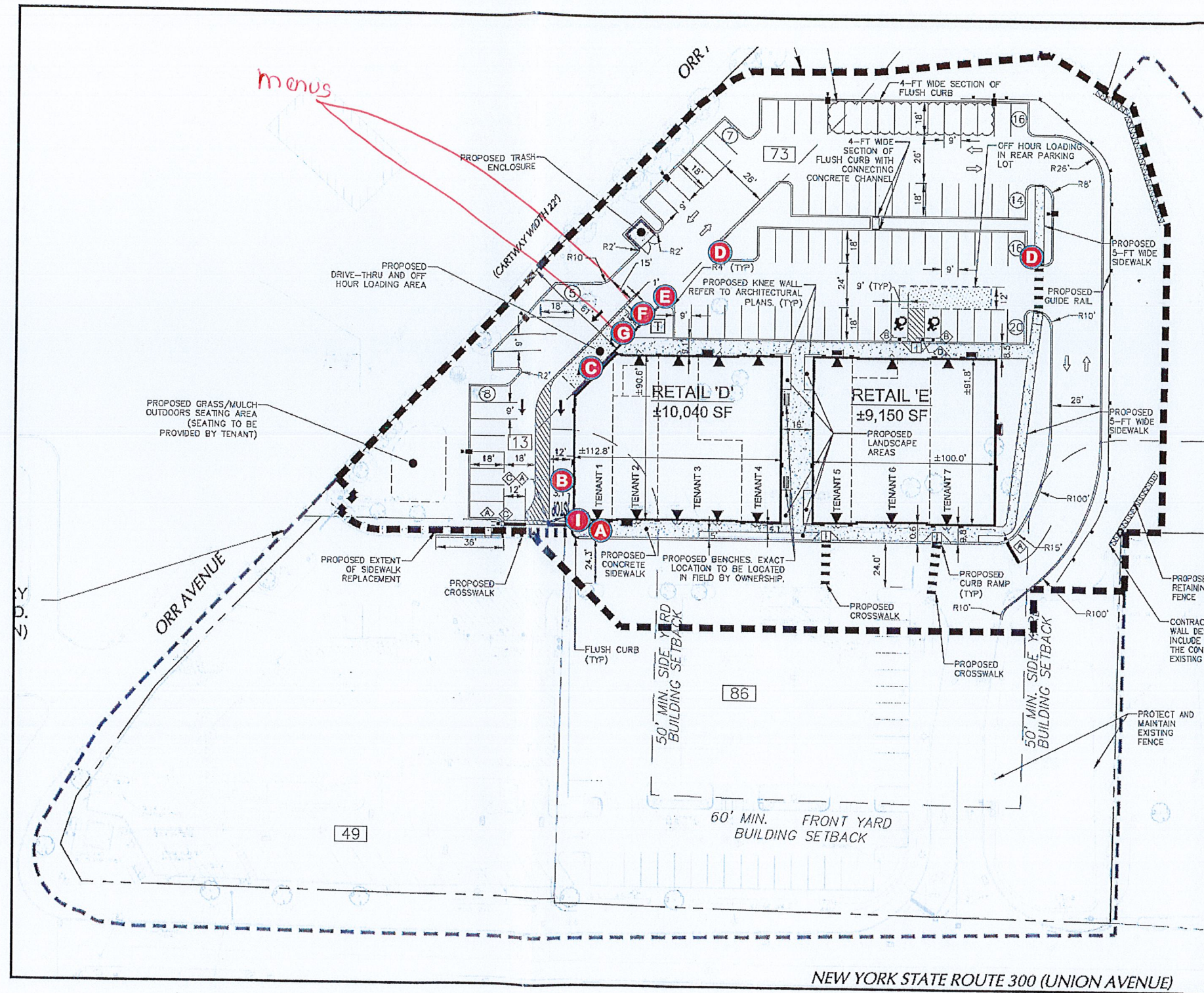
DRAWN BY
STUART HUGHES / KS

DATE PAGE
5/23/19 2 OF 16

SALES REP.
AMBER CASSEDY



SITEPLAN



Designed Per IBC 2015 NY Edition
NYS Building Code 2016

Wind Loads

Ultimate Design Wind Speed	115 mph
Nominal Design Wind Speed	89.1 mph
Risk Cat.	II
(3-sec Peak Gust MPH*)	
Wind Importance Factor	I = 1.00
Wind Exposure	C
Gust Factor	0.85

Snow Loads

Ground Snow Load	Pg= 30 psf
Snow Exposure Factor	Ce= 1.0
Snow Load Importance	Is= 1.1
Thermal Factor	Ct= 1.2

Exterior components designed in accordance with applicable provisions of the ASCE 7-10



MURDOCH ENGINEERING
SIGN STRUCTURE PROFESSIONALS
2 HUMMINGBIRD CT.
HOWELL NJ 07731
(973) 519-8215

7/16/2019

Jere Murdoch, PE
Professional Engineer
NY PE Lic. #089862

APPROVED