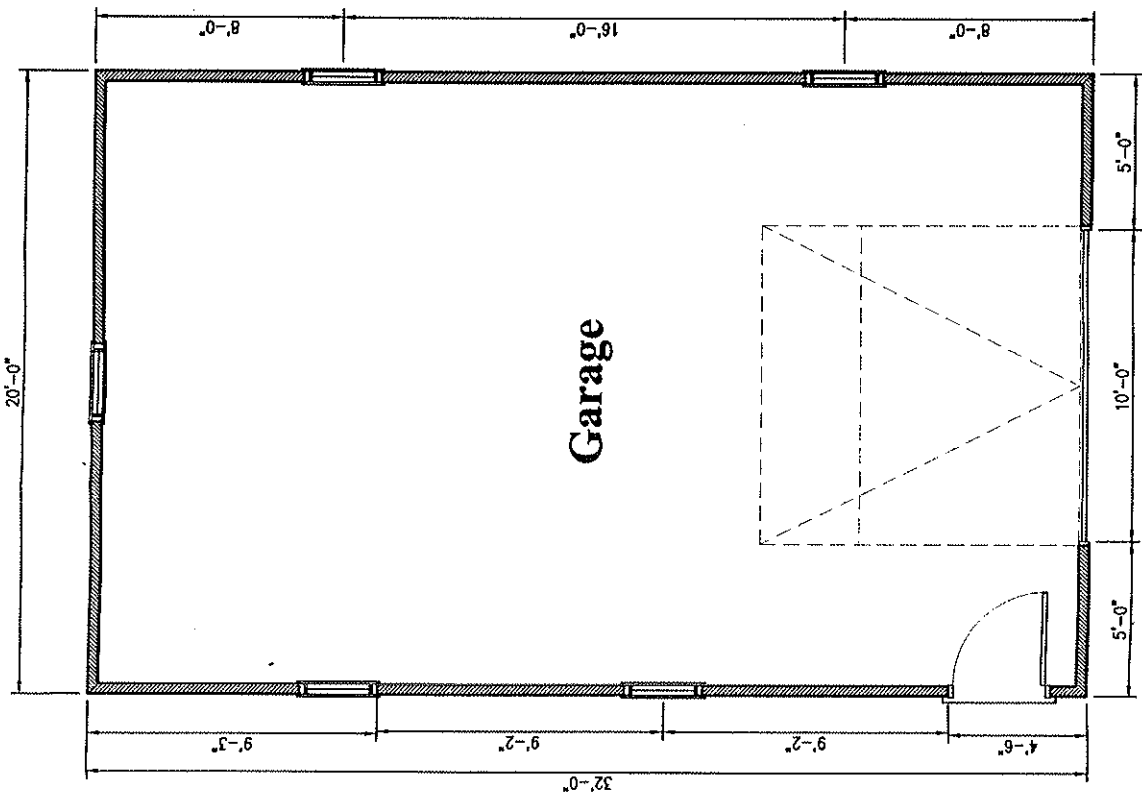
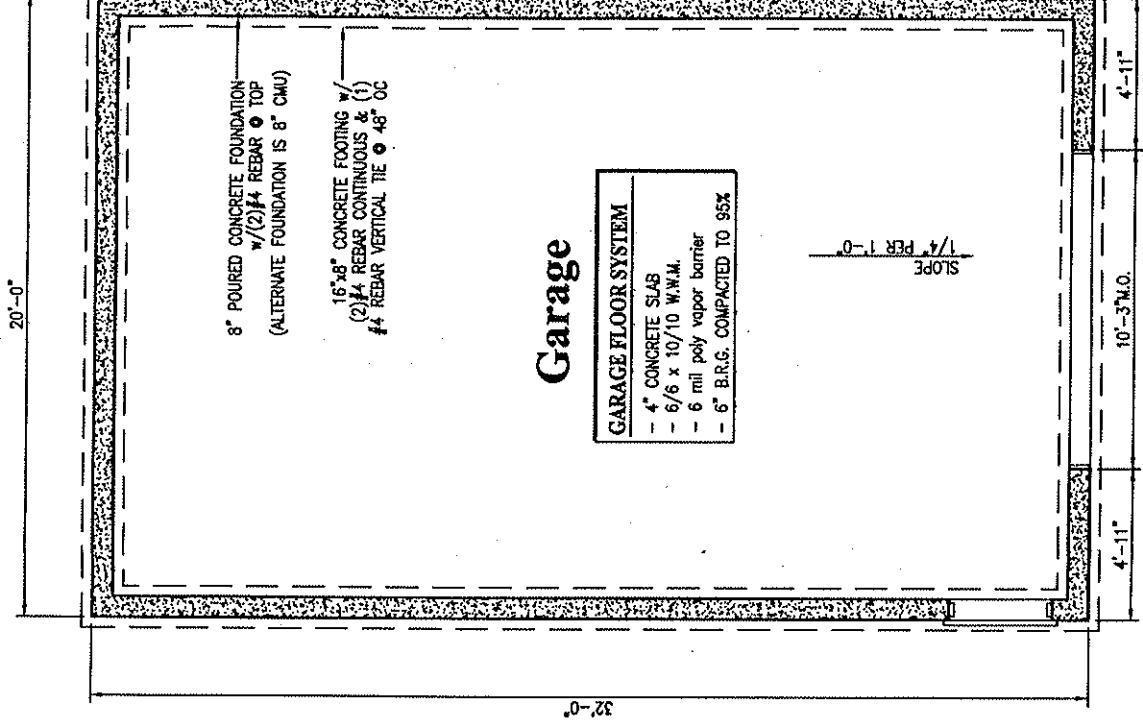


7 **Site Plan**
A1 Scale: 1"=30'-0"



5 1st Floor Plan

A1 Scale: 1/4"=1'-0"



6 Foundation Plan

A1 Scale: 1/4"=1'-0"

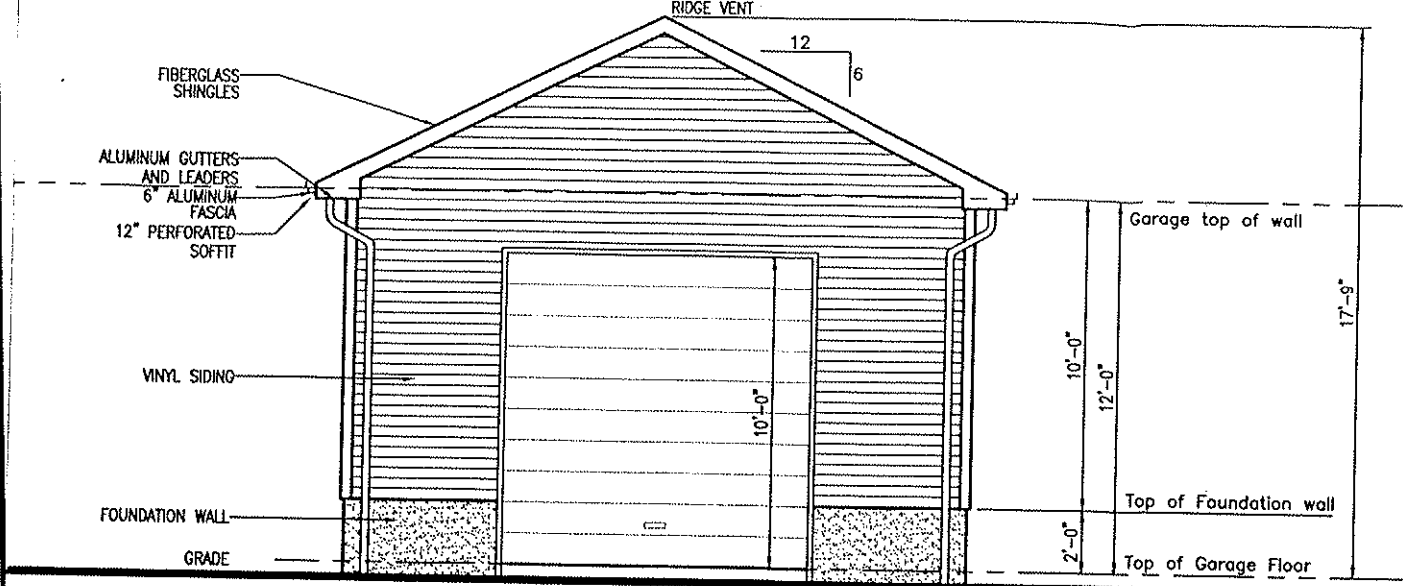
Garage

- GARAGE FLOOR SYSTEM**
- 4" CONCRETE SLAB
 - 6/6 x 10/10 W.W.M.
 - 6 mil poly vapor barrier
 - 6" B.R.C. COMPACTED TO 95%

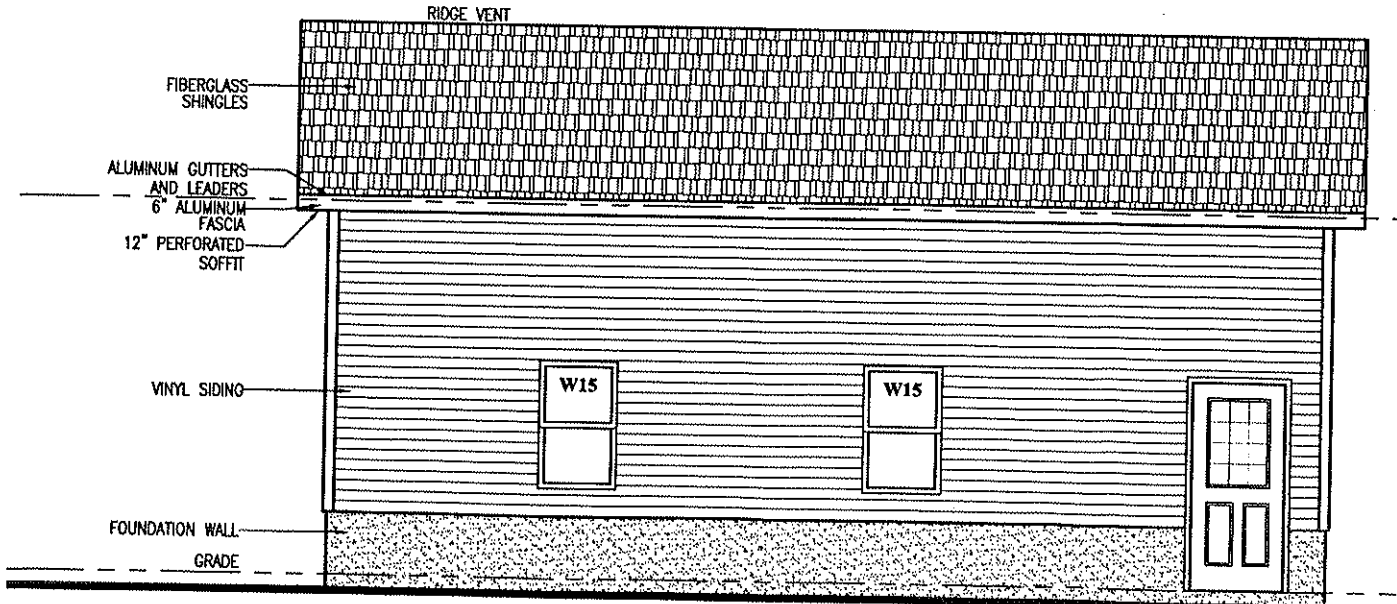
8" POURED CONCRETE FOUNDATION
w/(2) #4 REBAR @ TOP
(ALTERNATE FOUNDATION IS 8" CMU)

16"x8" CONCRETE FOOTING w/
(2) #4 REBAR CONTINUOUS & (1)
#4 REBAR VERTICAL TIE @ 48" OC

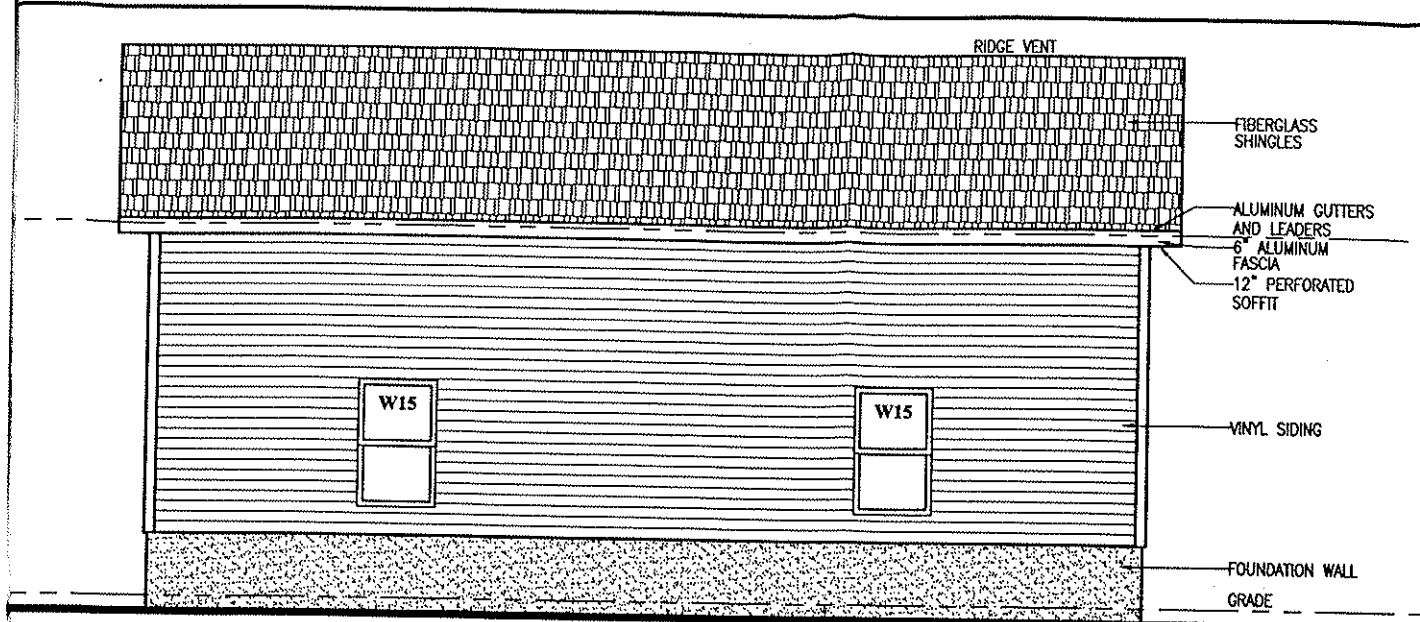
1/4" PER 1'-0" SLOPE



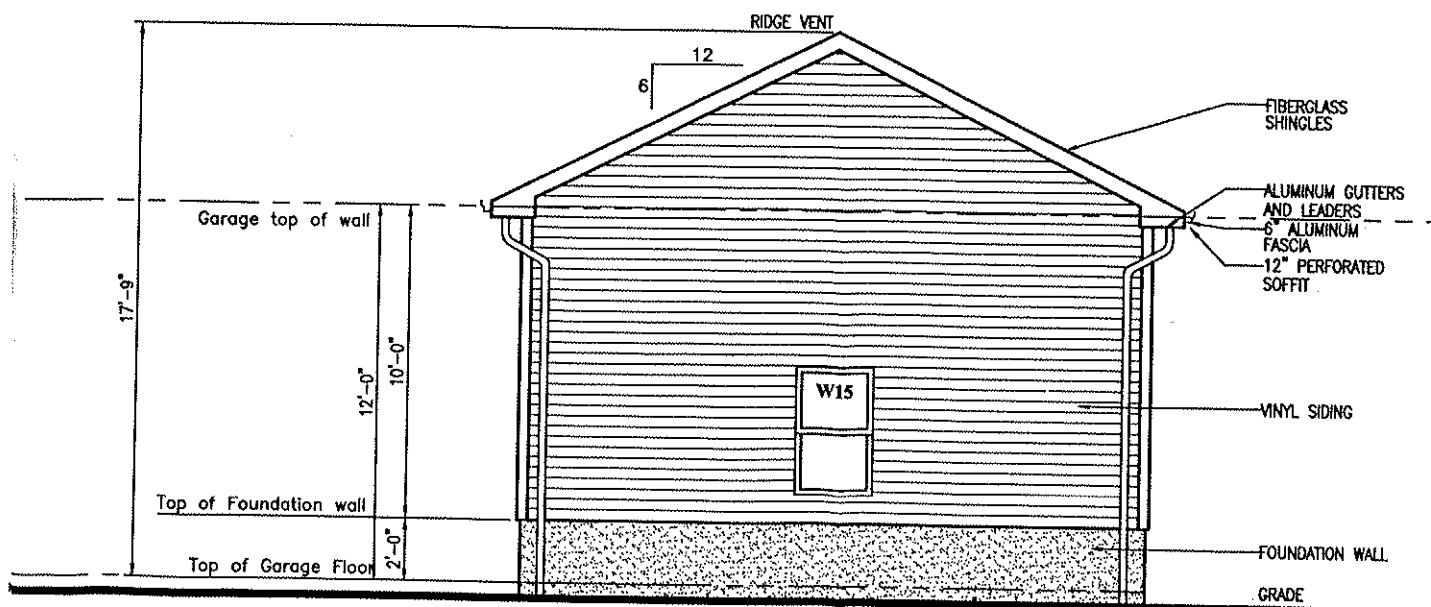
1 West Elevation
A1 Scale: 1/4"=1'-0"



3 North Elevation
A1



2
A1
South Elevation
 Scale: 1/4"=1'-0"



4
East Elevation