

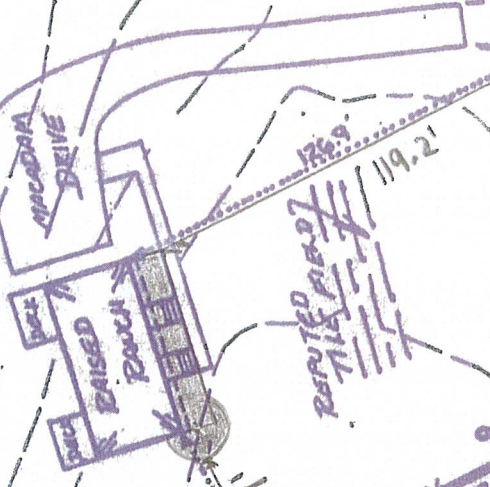
150' WIDE ROW, CH.G. & E.

n/f  
**DUBOIS**  
 LIBER. T10/CP 529  
 FAX MAP PARCELS 1-52

**ORANGE  
 ULSTER**

**MILL**

Lands to remain  
**WILLIAM WOODWARD**  
**AREA = 2.31 ACRES**  
**(100,545 S.F.)**



SCALE:

1" =	50'
1/2" =	25'
1/4" =	10.5'
1/32" =	8'
1/8" =	6.25'
3/32" =	4'
1/16" =	3.125'