

AREA: 0.92± AC.

N13°31'13"W

181.36

END POST

S78°48'15"W

24" OAK

POST & RAIL FENCE

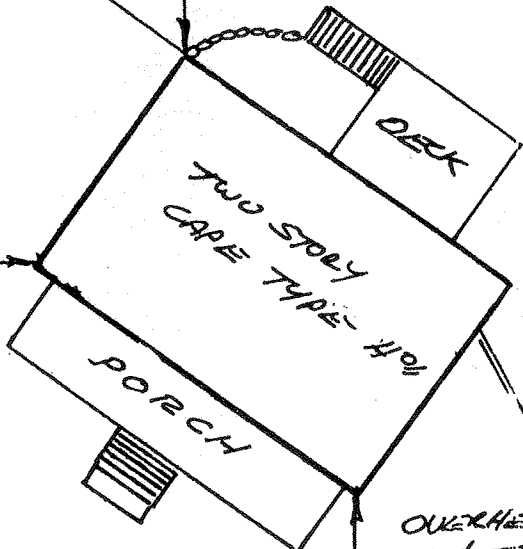
GRAVEL DRIVEWAY

GRAVEL/STONE DRIVEWAY

WELL

78'±

43.64'



DECK

TWO STORY
CAPE TYPE - HOU

PORCH

OVERHEAD
E&T
WIRES

TILE
FIELD
AREA

56.52'

S11°11'45"E

219.80

190.13

N76°26'11"E

ORANGE COUNTY
ULSTER COUNTY

EDGE
PAVEMENT

DECKER ROAD

LOT NO. 2
"A.J. & M.A. TERWILLIGER"