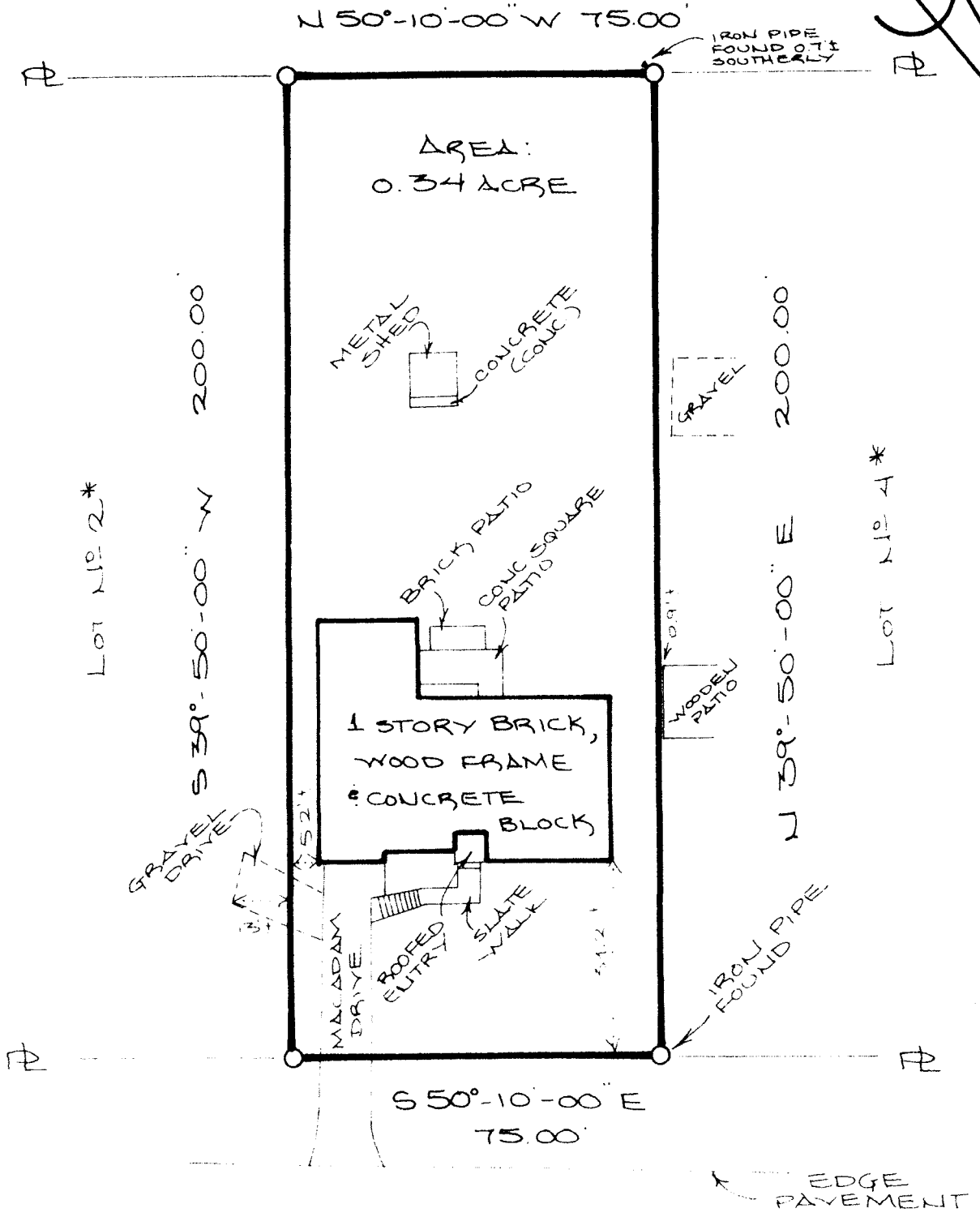


PROPOSED SUBDIVISION OF LANDS OF BUORN WETHRUS,
 MAP FILED IN THE ORANGE COUNTY CLERK'S OFFICE ON
 10/24/1988 AS MAP NO 9153.

LOT NO 2⁺



HIGHLAND AVENUE

MARK SEPT 92

MAP OF SURVEY
 LOT NO 3