

Full Size Plans

are available for viewing at the

**Zoning Board of Appeals**

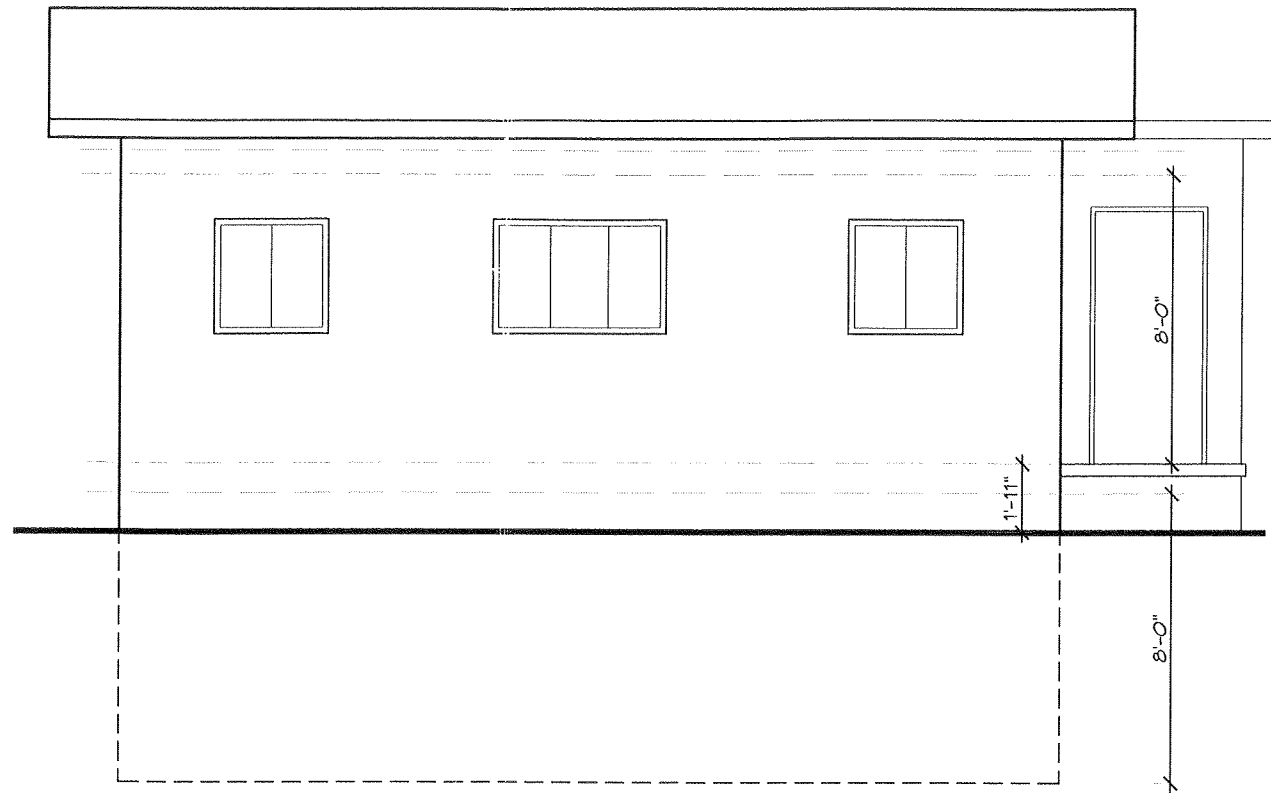
Office located at

**308 Gardnertown Road**

Newburgh, NY

845-566-4901

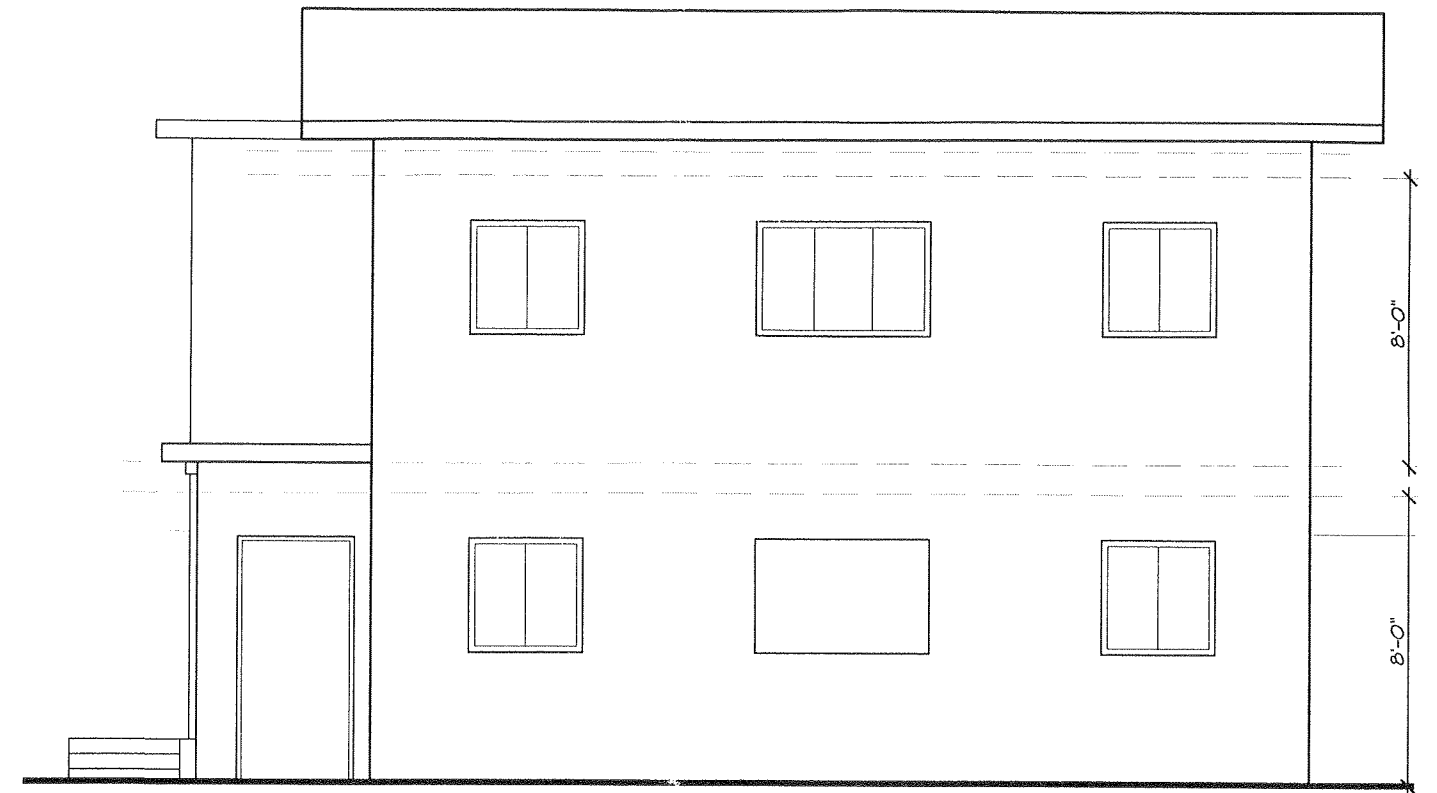




3  
EX-1

---

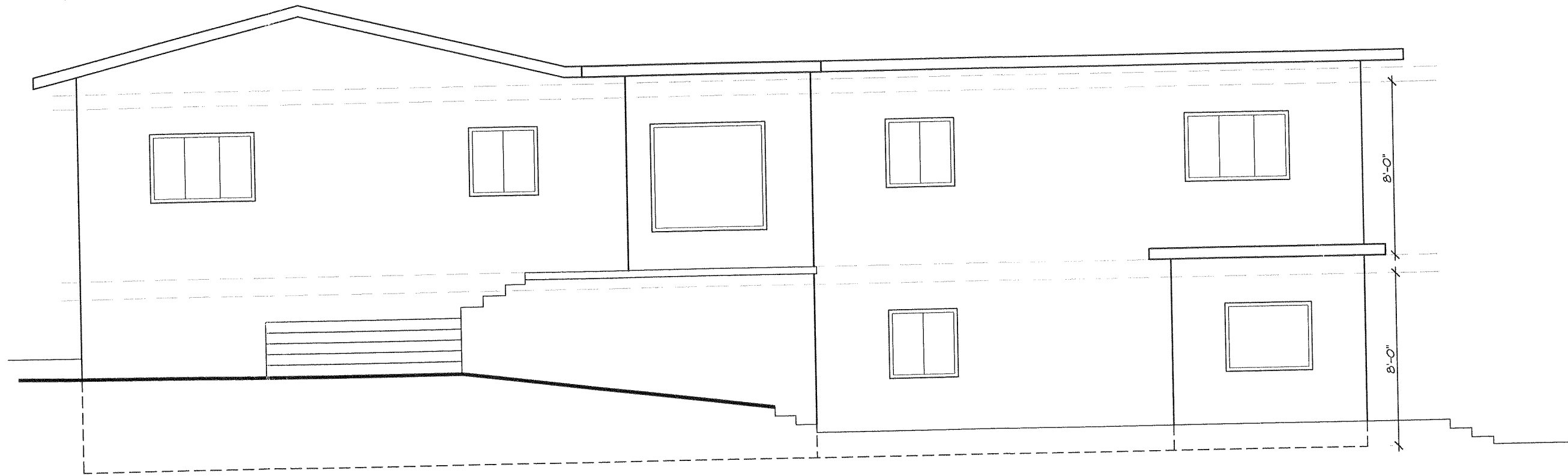
**EXISTING SOUTH ELEVATION**  
3/16" = 1'-0"



4  
EX-1

---

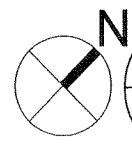
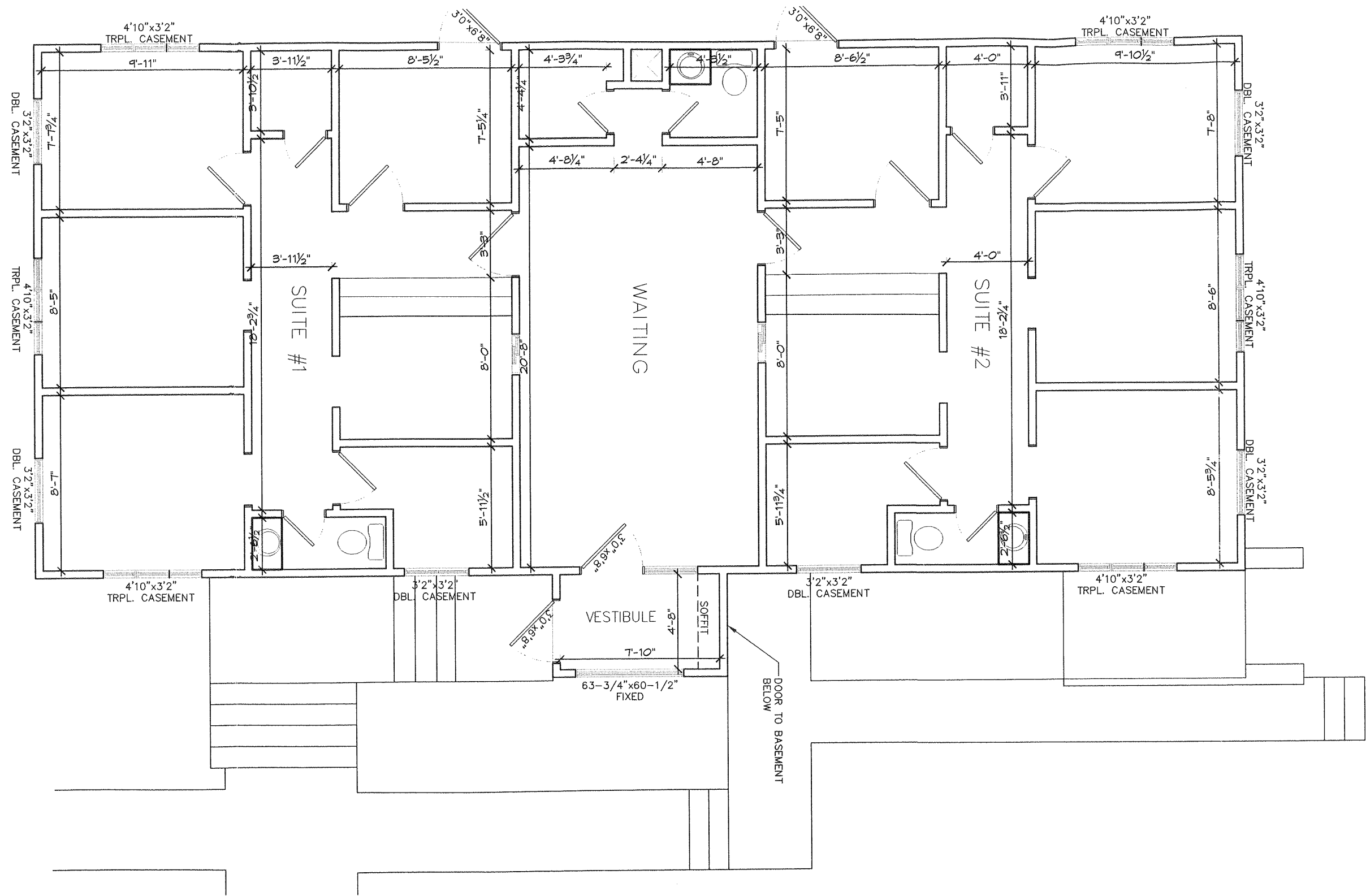
**EXISTING NORTH ELEVATION**  
3/16" = 1'-0"



5
EX-1
**EXISTING EAST ELEVATION**  
 3/16" = 1'-0"

EX-1

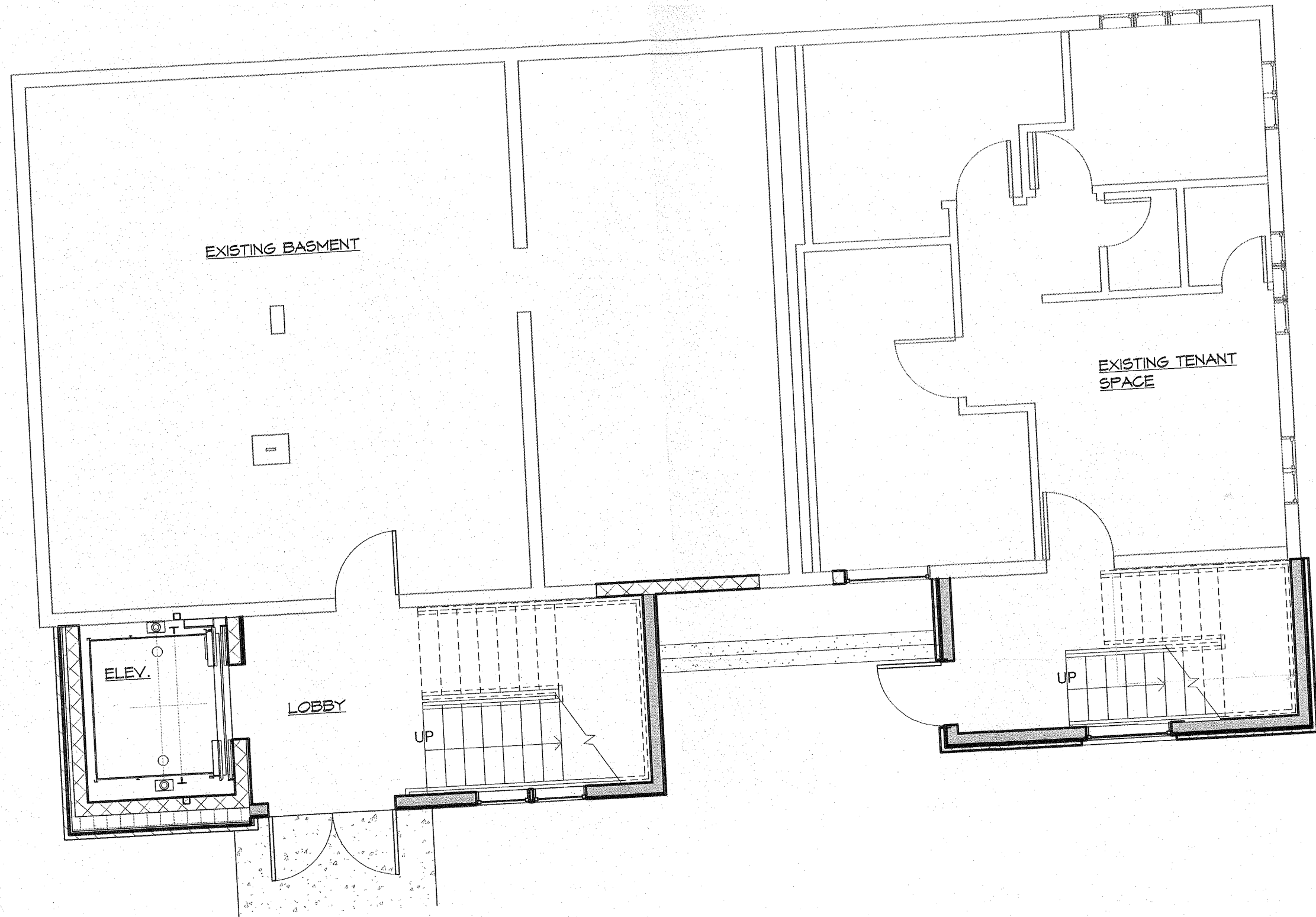
 3/16" = 1'-0"



2  
EX-1

EXISTING FLOOR PLAN

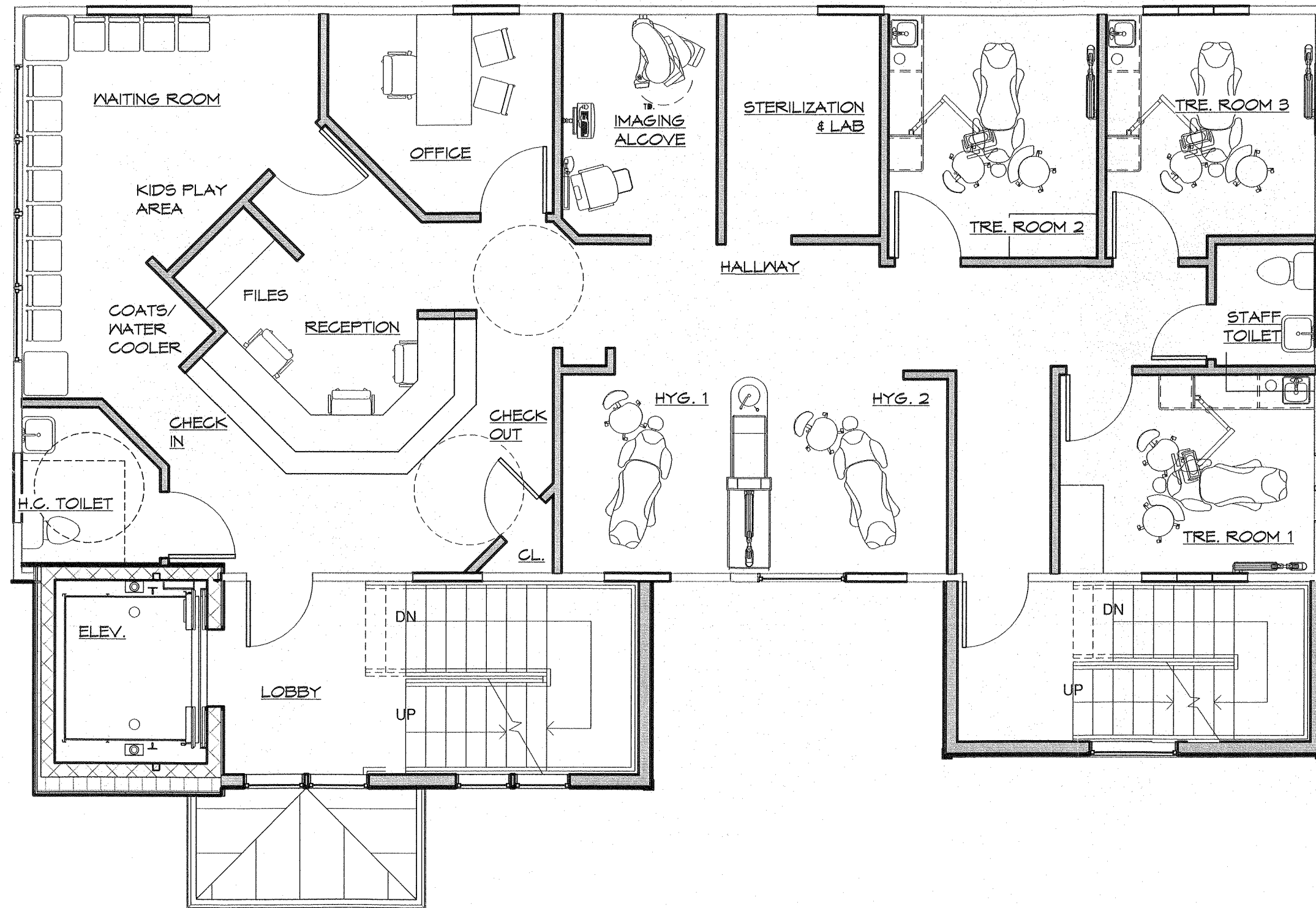
3/16" = 1'-0"



1 LOWER LEVEL PLAN  
A-1 3/16" = 1'-0"

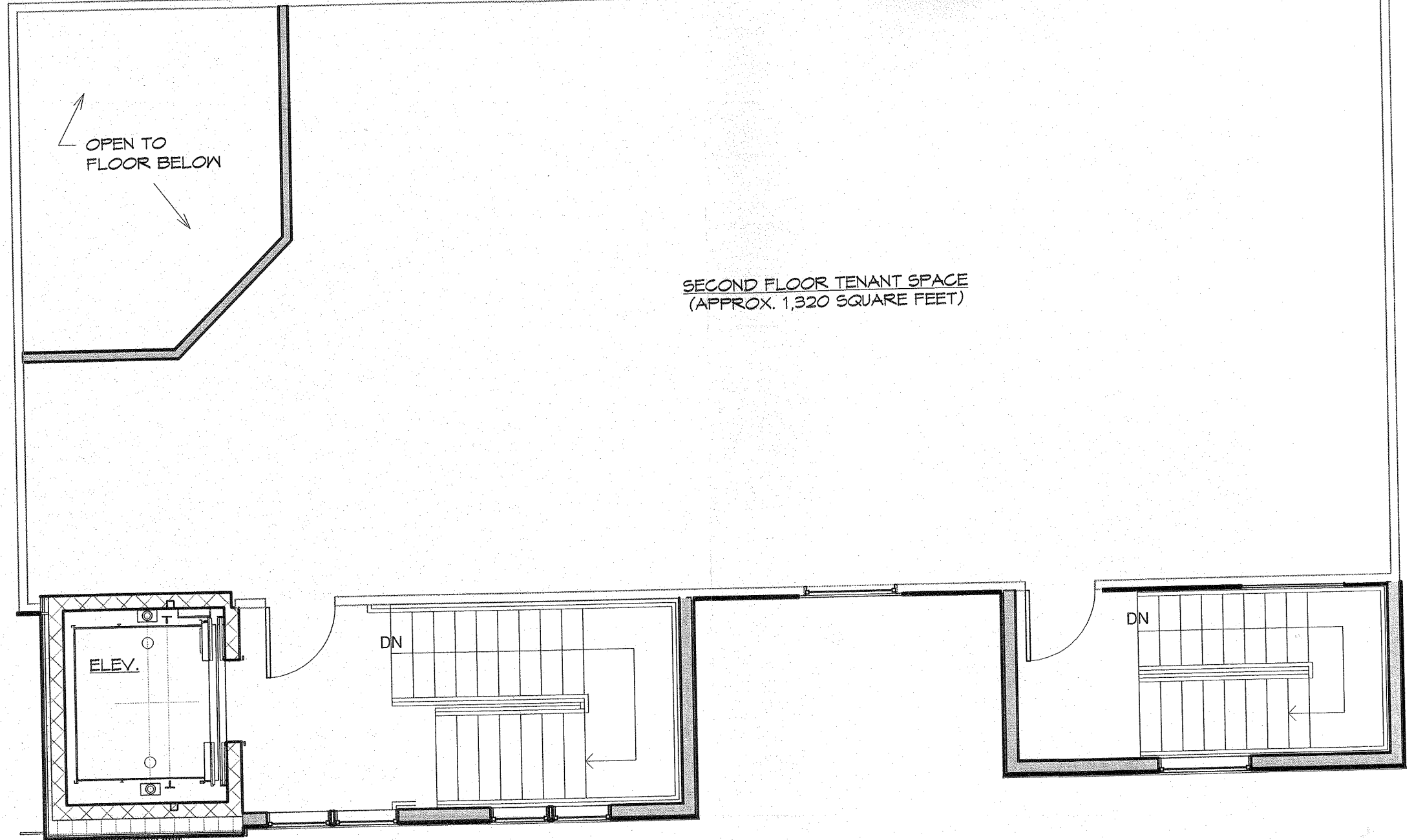
LEV  
LEV  
LEV  
LEV  
LEV  
LEV





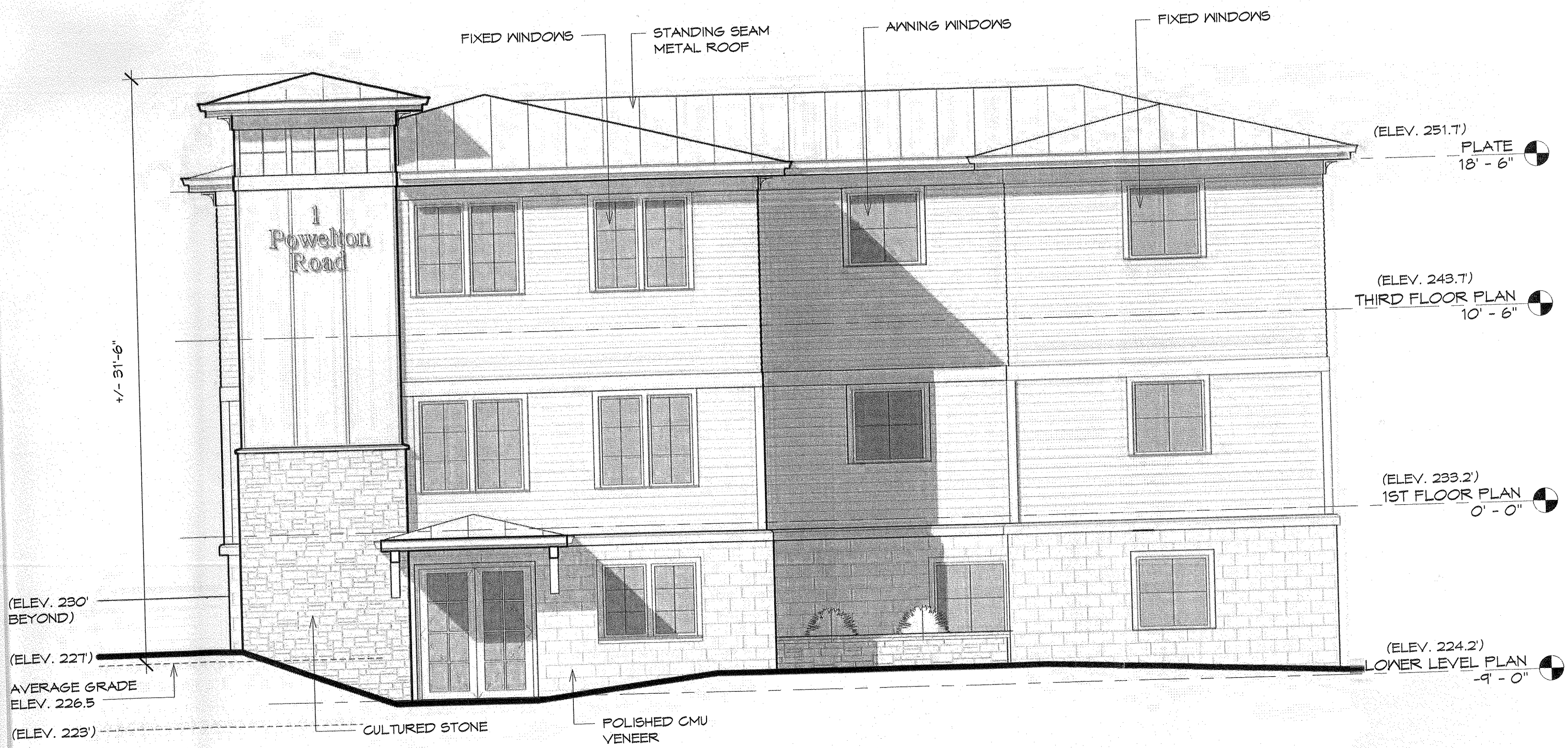

**N**  
 2  
**SECOND FLOOR PLAN**  
 A-1 3/16" = 1'-0"

THE SEAL AND SIGNATURE OF THE ARCHITECT OF RECORD.



3 THIRD FLOOR PLAN  
A-1 3/16" = 1'-0"





SIDE ELEVATION (FAST)

NOT TO SCALE. SEE INDEPENDENT FOR CONSTRUCTION WITHOUT