

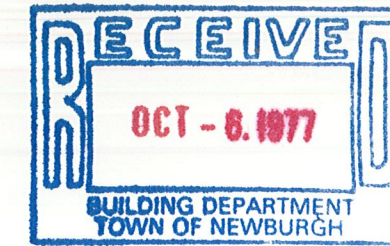
County of Orange

COUNTY CLERK'S OFFICE

Orange County Government
Center



Goshen, New York 10924



CHARLES N. WINTERS
County Clerk

Tel. (914) 294-5151

RICHARD E. RIKER
Deputy County Clerk

Date October 3, 1977

Chairman of Planning Board

Town of Newburgh

Dear Mr. McDermott :

In compliance with the Town Planning Law, this is to notify you that the Plan of Subdivision for ELIZABETH LEASE, Town of Newburgh, dated Sept. 16, 1977 and approved by you on Sept. 20, 1977, was filed in our office on Sept. 23, 1977, as Map number 4268 in Pocket 15 Folder A.

With kindest regards, I am

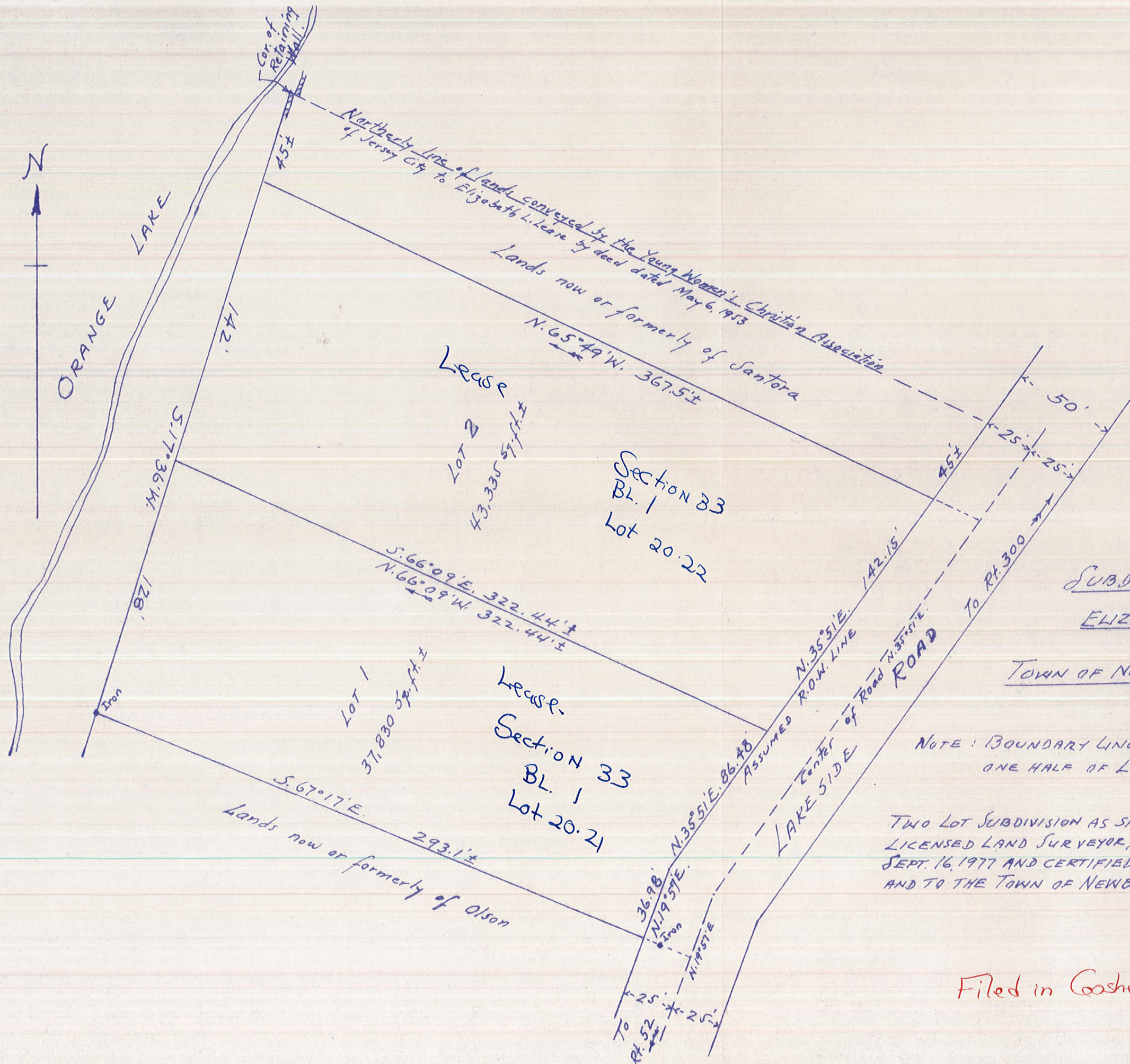
Very truly yours,

Charles N. Winters
County Clerk

By: Shirley B. Hadden
Chief Clerk

JMB

COPY to Assessor



SUBDIVISION APPROVED
Planning Board, Town of Newburgh
Orange County, New York
Jeffrey M. Verrill
 Chairman
 20 Sept 1999

SUBDIVISION OF LANDS
OF
ELIZABETH LEASE
IN THE
TOWN OF NEWBURGH, ORANGE CO., N.Y.
SCALE - 1" = 50 FT.

NOTE: BOUNDARY LINES FROM SURVEY BY OTHERS INCLUDED
 ONE HALF OF LAKESIDE ROAD - ASSUMED TO BE 50' WIDE

TWO LOT SUBDIVISION AS SHOWN WAS MADE BY GEORGE W. CORWIN
 LICENSED LAND SURVEYOR, N.Y. LICENSE N° 26352, COMPLETED
 SEPT. 16, 1977 AND CERTIFIED AS SHOWN TO ELIZABETH L. LEASE
 AND TO THE TOWN OF NEWBURGH.

Geo. W. Corwin

Filed in Coashen 9/23/77
 Map 4268