



McGOEY, HAUSER and EDSALL
CONSULTING ENGINEERS D.P.C.

RICHARD D. McGOEY, P.E. (NY & PA)
WILLIAM J. HAUSER, P.E. (NY, NJ & PA)
MARK J. EDSALL, P.E. (NY, NJ & PA)

MAIN OFFICE
33 Airport Center Drive
Suite 202
New Windsor, New York 12553

(845) 567-3100
fax: (845) 567-3232
e-mail: mheny@mhepc.com

**TOWN OF NEWBURGH
PLANNING BOARD
REVIEW COMMENTS**

PROJECT: AMENDED SITE PLAN JWCAH LIGHTING
PROJECT NO.: 14-11
PROJECT LOCATION: SECTION 97, BLOCK 2, LOT 42
PROJECT REPRESENTATIVE: DOCE ASSOCIATES
REVIEW DATE: 1 JULY 2014
MEETING DATE: 3 JULY 2014

1. The Applicants have addressed our previous comments including revisions to lighting levels consistent with the existing topography and light fixtures specified.
2. Notes have been added to the plans regarding manually activating lights for snow removal or maintenance and utilizing timers or photo sensors during events requiring use of the upper parking lot. Lighting will not be utilized if the upper parking lot is not utilized. It is our understanding that the upper parking lot is secured with a gate depicted on the plans.
3. The lighting fixtures selected are pedestrian style lighting poles with a 16.5 foot total height. Lighting fixtures will be approximately 16 feet high on the poles.

Respectfully submitted,

***McGoey, Hauser and Edsall
Consulting Engineers, D.P.C.***

Patrick J. Hines
Associate

REGIONAL OFFICES

• 111 Wheatfield Drive • Milford, Pennsylvania 18337 • 570-296-2765 •
• 540 Broadway • Monticello, New York 12701 • 845-794-3399 •

Richard I. Eldred, P.E.
2891 Route 22
Patterson, New York 12563-2228
(914) 319-7424

June 23, 2014

John P. Ewasutyn, Chairperson and Members of the Board
Town of Newburgh Planning Board

Re: Response to Review Comments by Patrick J. Hines

Dear Mr. Ewasutyn and Members of the Board

- P. Hines Review Comment 1: A review of the lighting plan submitted identifies apparent inconsistencies in the lighting levels depicted at the fixtures. Assuming all fixtures are the same as identified in the luminaire schedule, the lighting levels should be consistent at each of the fixtures.

Response: The calculations have been further reviewed and noted that they were based upon the original terrain and some of the poles being higher. The revised calculations using the 15-ft. poles and maximum lighting level at the paving of the drive and parking lot directly beneath the fixtures are presented on an updated Plan SP5 within the 'Statistics' box.

- P. Hines Review Comment 2: The red circles on the walkway to the parking lot should be identified on the lighting schedule.

Response: There are 6 – 13 watt Bollards about 3 feet high that have been added to the Luminaire Schedule.

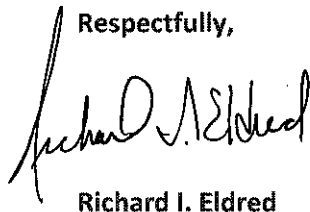
- P. Hines Review Comment 3: Revision block identifies supplemental emergency/maintenance lighting added. It is unclear on the plans (where) this lighting was added.

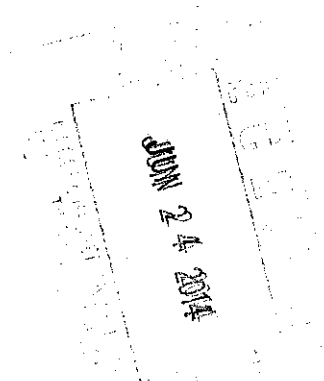
Response : The 4/13 revision is reworded to: Supplemental Maintenance Lighting – Added for Access Drive/ Upper lot.

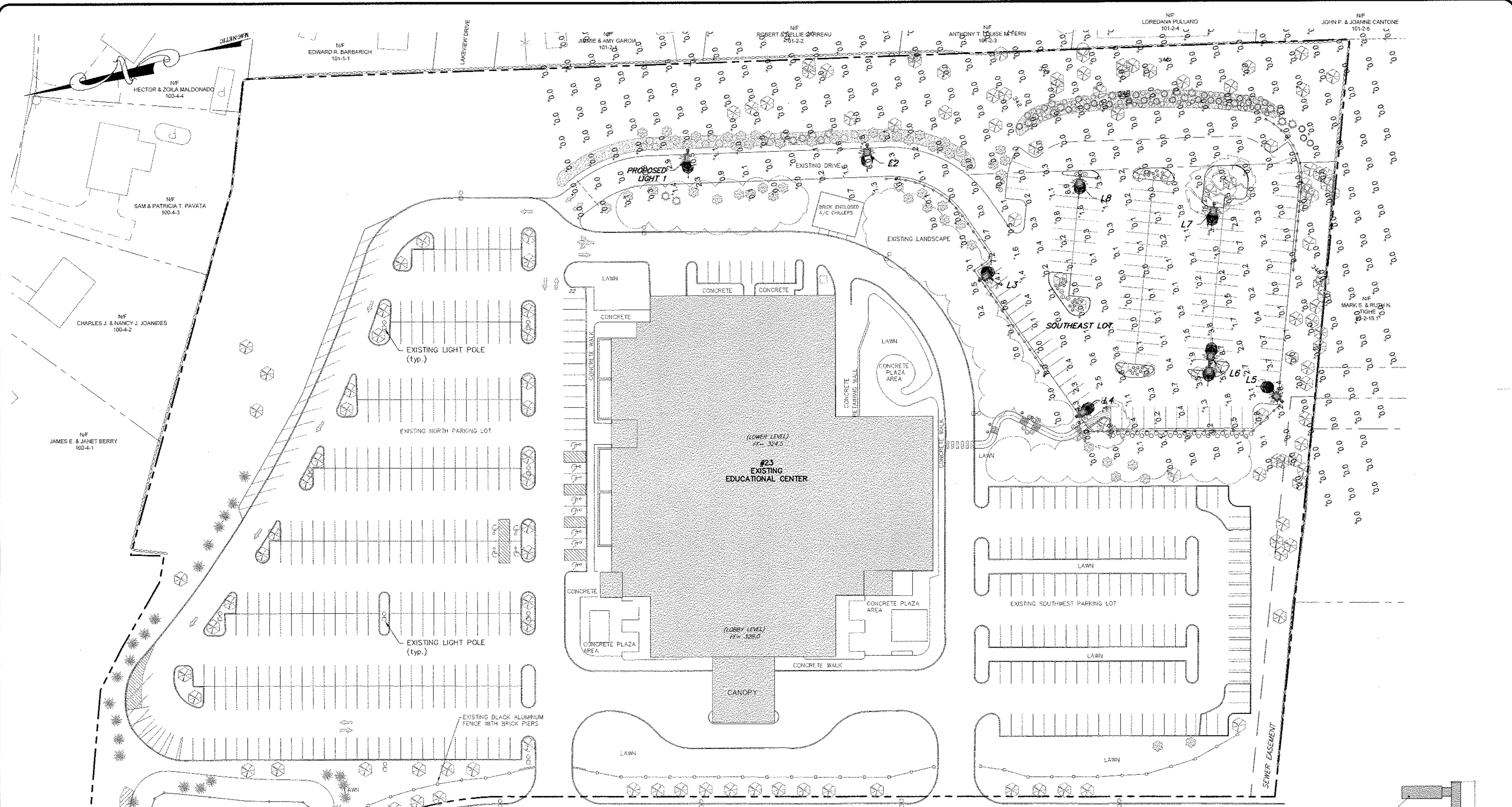
- P. Hines Review Comment 4: Method of operating and time of the lights should be added to the plans. Will lights be manually turned on, run by photo sensors used only during events?

Response: Note 1 added: Lights actuated manually for snow-plowing activities or maintenance; actuated by timer / photo sensors during events requiring overflow use to upper lot.

Respectfully,


Richard I. Eldred



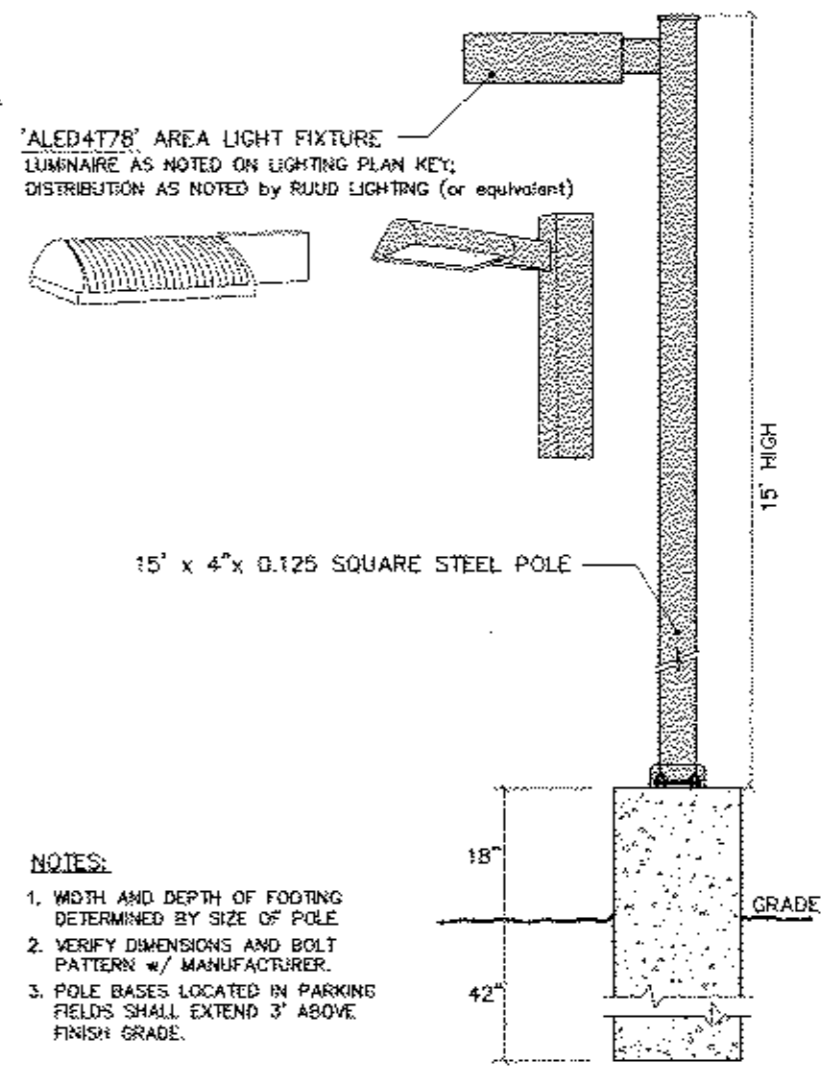


UNITY PLACE

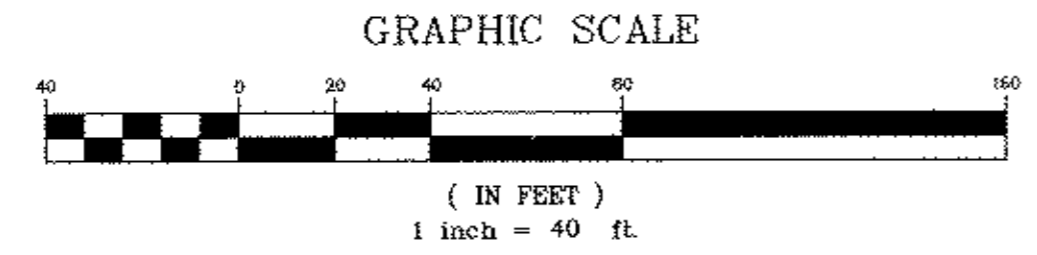
Statistic	Symbol	Avg	Max (Value beneath fixture)	Min	MaxMin	AvgMin	AvgMax
Uniformity	U	0.85	1.23	0.00	N/A	N/A	0.01
Footcandle	F	11.8	11.8	11.8	11.8	11.8	11.8
Footcandle	F	11.8	11.8	11.8	11.8	11.8	11.8
Footcandle	F	11.8	11.8	11.8	11.8	11.8	11.8
Footcandle	F	11.8	11.8	11.8	11.8	11.8	11.8
Footcandle	F	11.8	11.8	11.8	11.8	11.8	11.8

Symbol	Label	Qty	Catalog Number	Description	Lamp	Fits	Lumens	LLF	Watts
D	7	ALED4778-RVLED4778P-WRLED4778 (TYPE IV)	CAST FINISH METAL HOUSING, 0 CIRCUIT BOARD, 1 EACH WITH 1 LED, ANGLE OF REFLECTOR WITH SPECULAR FINISH AND 1 APERTURE PER LED, CLEAR FLAT GLASS LENS IN CAST WHITE PAINTED METAL LENS FRAME.	80 WHITE MULTICHIP LIGHT EMITTING DIODES (LEDs), 2 LEDS TILTED 36-DEGREES FROM VERTICAL, BASE-UP POSITION AND CANTED 18-DEGREES FROM STRAIGHT AHEAD, 2 LEDS TILTED 37-DEGREES FROM VERTICAL, BASE-UP POSITION AND CANTED 18-DEGREES FROM STRAIGHT AHEAD, 2 LEDS TILTED 37-DEGREES FROM VERTICAL, BASE-UP POSITION AND CANTED 22-DEGREES FROM STRAIGHT AHEAD.	ALED4778-100	Abalook	1,000	1.00	79.1
D	1	ALED4778-RVLED4778P-WRLED4778 (TYPE IV)	CAST FINISH METAL HOUSING, 0 CIRCUIT BOARD, 1 EACH WITH 1 LED, ANGLE OF REFLECTOR WITH SPECULAR FINISH AND 1 APERTURE PER LED, CLEAR FLAT GLASS LENS IN CAST WHITE PAINTED METAL LENS FRAME.	80 WHITE MULTICHIP LIGHT EMITTING DIODES (LEDs), 2 LEDS TILTED 36-DEGREES FROM VERTICAL, BASE-UP POSITION AND CANTED 18-DEGREES FROM STRAIGHT AHEAD, 2 LEDS TILTED 37-DEGREES FROM VERTICAL, BASE-UP POSITION AND CANTED 18-DEGREES FROM STRAIGHT AHEAD, 2 LEDS TILTED 37-DEGREES FROM VERTICAL, BASE-UP POSITION AND CANTED 22-DEGREES FROM STRAIGHT AHEAD.	ALED4778-100	Abalook	1,000	1.00	79.1
D	6	BL-ED13	13W LED BOLLARD 42 DEGREE BURNING RADIUS LIGHTING						

- NOTES**
- LIGHTS MANUALLY ACTIVATED FOR SNOW REMOVAL ACTIVITIES OR MAINTENANCE, ACTIVATED BY TRIP-POINT SENSORS DURING EVENTS REQUIRING OVERFLOW USE TO UPPER LOT.
 - ALL POLE HEIGHTS PER MANUFACTURER RECOMMENDATIONS AT 15 FEET. DESIGN SHOWS WORSE CASE CONDITION OF LIGHT SPLASH. LOWER HEIGHTS WILL RESULT IN LOWER HORIZONTAL ILLUMINATION AND HOT SPOTS AT FIXTURES.
 - CALCULATED VALUES SHOWN ON DRAWINGS ARE IN FOOT CANDLES (FC). DISTANCE BETWEEN CROSS TARGETS AT 15 FEET GRID AND DO NOT ACCOUNT FOR ADDITIONAL REDUCTIONS IN POTENTIAL, TREE SPANS AFFORDED BY LANDSCAPE SCREENING.
 - IESNA RECOMMENDED HORIZONTAL ILLUMINATION:
 - VEHICLE AREAS - HIGH ACTIVITY LEVEL: 2.0 FC AVERAGE ON PAVEMENT; MEDIUM ACTIVITY LEVEL: 1.5 FC AVERAGE ON PAVEMENT; LOW ACTIVITY LEVEL: 0.5 FC AVERAGE ON PAVEMENT
 - PEDESTRIAN AREAS - HIGH ACTIVITY LEVEL: 0.8 FC MINIMUM ON PAVEMENT; MEDIUM ACTIVITY LEVEL: 0.6 FC MINIMUM ON PAVEMENT; LOW LEVEL OF ACTIVITY: 0.2 FC MINIMUM ON PAVEMENT

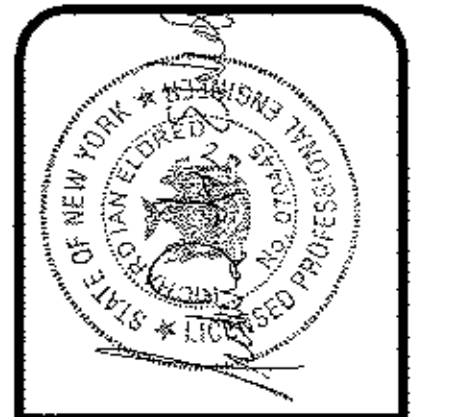


AGENCY SUBMISSION ONLY
NOT FOR CONSTRUCTION



REVISIONS

NO.	DATE	DESCRIPTION
1	3-25-08	MODIFICATIONS PER STAFF COMMENTS
2	6-2-08	MODIFICATIONS PER CONDITIONS OF
3	7-22-08	ADD TREE INVENTORY AND
4	8-11-08	COMMENTS MADE PER LETTER
5	8-11-08	COMMENTS MADE PER LETTER
6	8-11-08	COMMENTS MADE PER LETTER
7	8-11-08	COMMENTS MADE PER LETTER
8	8-11-08	COMMENTS MADE PER LETTER
9	8-11-08	COMMENTS MADE PER LETTER
10	8-11-08	COMMENTS MADE PER LETTER
11	8-11-08	COMMENTS MADE PER LETTER
12	8-11-08	COMMENTS MADE PER LETTER
13	8-11-08	COMMENTS MADE PER LETTER
14	8-11-08	COMMENTS MADE PER LETTER
15	8-11-08	COMMENTS MADE PER LETTER
16	8-11-08	COMMENTS MADE PER LETTER
17	8-11-08	COMMENTS MADE PER LETTER
18	8-11-08	COMMENTS MADE PER LETTER
19	8-11-08	COMMENTS MADE PER LETTER
20	8-11-08	COMMENTS MADE PER LETTER
21	8-11-08	COMMENTS MADE PER LETTER
22	8-11-08	COMMENTS MADE PER LETTER
23	8-11-08	COMMENTS MADE PER LETTER
24	8-11-08	COMMENTS MADE PER LETTER
25	8-11-08	COMMENTS MADE PER LETTER
26	8-11-08	COMMENTS MADE PER LETTER
27	8-11-08	COMMENTS MADE PER LETTER
28	8-11-08	COMMENTS MADE PER LETTER
29	8-11-08	COMMENTS MADE PER LETTER
30	8-11-08	COMMENTS MADE PER LETTER
31	8-11-08	COMMENTS MADE PER LETTER
32	8-11-08	COMMENTS MADE PER LETTER
33	8-11-08	COMMENTS MADE PER LETTER
34	8-11-08	COMMENTS MADE PER LETTER
35	8-11-08	COMMENTS MADE PER LETTER
36	8-11-08	COMMENTS MADE PER LETTER
37	8-11-08	COMMENTS MADE PER LETTER
38	8-11-08	COMMENTS MADE PER LETTER
39	8-11-08	COMMENTS MADE PER LETTER
40	8-11-08	COMMENTS MADE PER LETTER
41	8-11-08	COMMENTS MADE PER LETTER
42	8-11-08	COMMENTS MADE PER LETTER
43	8-11-08	COMMENTS MADE PER LETTER
44	8-11-08	COMMENTS MADE PER LETTER
45	8-11-08	COMMENTS MADE PER LETTER
46	8-11-08	COMMENTS MADE PER LETTER
47	8-11-08	COMMENTS MADE PER LETTER
48	8-11-08	COMMENTS MADE PER LETTER
49	8-11-08	COMMENTS MADE PER LETTER
50	8-11-08	COMMENTS MADE PER LETTER
51	8-11-08	COMMENTS MADE PER LETTER
52	8-11-08	COMMENTS MADE PER LETTER
53	8-11-08	COMMENTS MADE PER LETTER
54	8-11-08	COMMENTS MADE PER LETTER
55	8-11-08	COMMENTS MADE PER LETTER
56	8-11-08	COMMENTS MADE PER LETTER
57	8-11-08	COMMENTS MADE PER LETTER
58	8-11-08	COMMENTS MADE PER LETTER
59	8-11-08	COMMENTS MADE PER LETTER
60	8-11-08	COMMENTS MADE PER LETTER
61	8-11-08	COMMENTS MADE PER LETTER
62	8-11-08	COMMENTS MADE PER LETTER
63	8-11-08	COMMENTS MADE PER LETTER
64	8-11-08	COMMENTS MADE PER LETTER
65	8-11-08	COMMENTS MADE PER LETTER
66	8-11-08	COMMENTS MADE PER LETTER
67	8-11-08	COMMENTS MADE PER LETTER
68	8-11-08	COMMENTS MADE PER LETTER
69	8-11-08	COMMENTS MADE PER LETTER
70	8-11-08	COMMENTS MADE PER LETTER
71	8-11-08	COMMENTS MADE PER LETTER
72	8-11-08	COMMENTS MADE PER LETTER
73	8-11-08	COMMENTS MADE PER LETTER
74	8-11-08	COMMENTS MADE PER LETTER
75	8-11-08	COMMENTS MADE PER LETTER
76	8-11-08	COMMENTS MADE PER LETTER
77	8-11-08	COMMENTS MADE PER LETTER
78	8-11-08	COMMENTS MADE PER LETTER
79	8-11-08	COMMENTS MADE PER LETTER
80	8-11-08	COMMENTS MADE PER LETTER
81	8-11-08	COMMENTS MADE PER LETTER
82	8-11-08	COMMENTS MADE PER LETTER
83	8-11-08	COMMENTS MADE PER LETTER
84	8-11-08	COMMENTS MADE PER LETTER
85	8-11-08	COMMENTS MADE PER LETTER
86	8-11-08	COMMENTS MADE PER LETTER
87	8-11-08	COMMENTS MADE PER LETTER
88	8-11-08	COMMENTS MADE PER LETTER
89	8-11-08	COMMENTS MADE PER LETTER
90	8-11-08	COMMENTS MADE PER LETTER
91	8-11-08	COMMENTS MADE PER LETTER
92	8-11-08	COMMENTS MADE PER LETTER
93	8-11-08	COMMENTS MADE PER LETTER
94	8-11-08	COMMENTS MADE PER LETTER
95	8-11-08	COMMENTS MADE PER LETTER
96	8-11-08	COMMENTS MADE PER LETTER
97	8-11-08	COMMENTS MADE PER LETTER
98	8-11-08	COMMENTS MADE PER LETTER
99	8-11-08	COMMENTS MADE PER LETTER
100	8-11-08	COMMENTS MADE PER LETTER



CODESPOTI & ASSOCIATES, P.C.
 204 BOSTON POST ROAD, SUITE 202
 NEWBURGH, NY 10974
 TEL: 845-253-7889
 FAX: 845-253-7889-1001

AMENDED SITE DEVELOPMENT PLANS
JWCAH EDUCATIONAL CENTER
 PREPARED FOR
JWCAH, INC.
 NEWBURGH, NEW YORK

SITE LIGHTING PLAN
 UPPER LOT

DWG #	CHECKED
03726	
CAD FILE	ACAD VER
3652	LD07

DATE
2/12/08
SCALE
1" = 40'
JOB NO.
3652
SHEET
SP5

SP5