

Full Size Site Plans

are available for viewing at the

Zoning Board of Appeals

Office located at

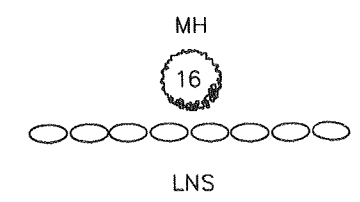
308 Gardnertown Road

Newburgh, NY

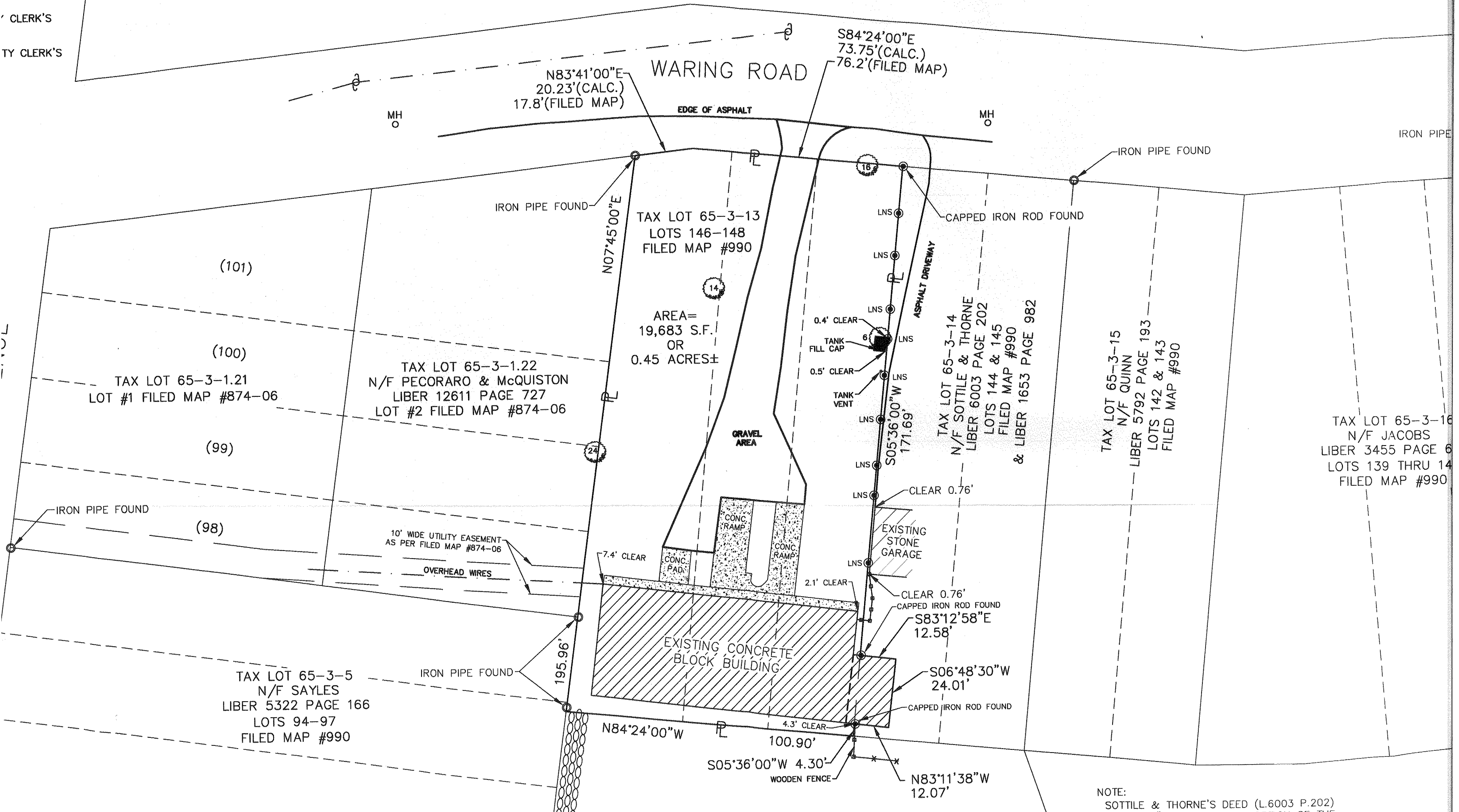
845-566-4901

FRANK
2002
TION 65.
DIVISION OF
PROPERTY",
RK'S OFFICE
.1.

CLERK'S
TY CLERK'S



DEN
DEN
DEN
DEN
DEN



TAX LOT 65-3-1.21
LOT #1 FILED MAP #874-06

TAX LOT 65-3-1.22
N/F PECORARO & McQUISTON
LIBER 12611 PAGE 727
LOT #2 FILED MAP #874-06

TAX LOT 65-3-13
LOTS 146-148
FILED MAP #990

AREA=
19,683 S.F.
OR
0.45 ACRES±

TAX LOT 65-3-14
N/F SOTTILE & THORNE
LIBER 6003 PAGE 202
LOTS 144 & 145
FILED MAP #990
& LIBER 1653 PAGE 982

TAX LOT 65-3-15
N/F QUINN
LIBER 5792 PAGE 193
LOTS 142 & 143
FILED MAP #990

TAX LOT 65-3-16
N/F JACOBS
LIBER 3455 PAGE 6
LOTS 139 THRU 143
FILED MAP #990

TAX LOT 65-3-5
N/F SAYLES
LIBER 5322 PAGE 166
LOTS 94-97
FILED MAP #990

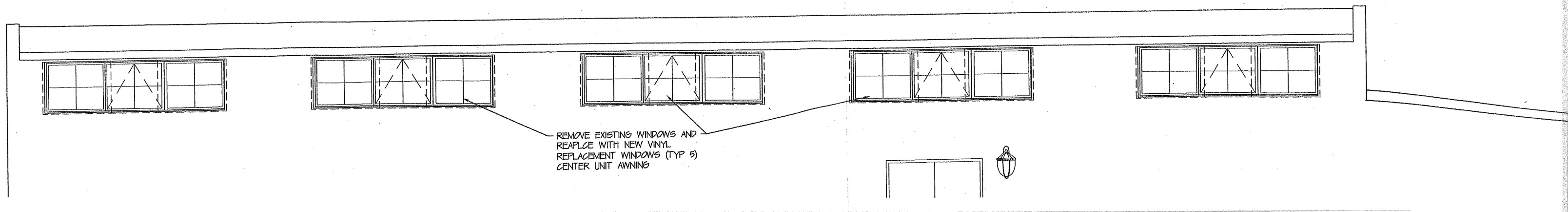
NOTE:
SOTTILE & THORNE'S DEED (L.6003 P.202)
SUPPORTS THAT PART OR PORTION OF THE



PROVIDE OPENING FOR AND INSTALL NEW FRENCH DOOR

REMOVE EXISTING OVERHEAD DOOR
INSTALL FRAMING AND WINDOW

1 NORTH ELEVATION
A-4 1" = 1'-0"



REMOVE EXISTING WINDOWS AND REAPLCE WITH NEW VINYL REPLACEMENT WINDOWS (TYP 5)
CENTER UNIT AWNING