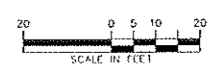
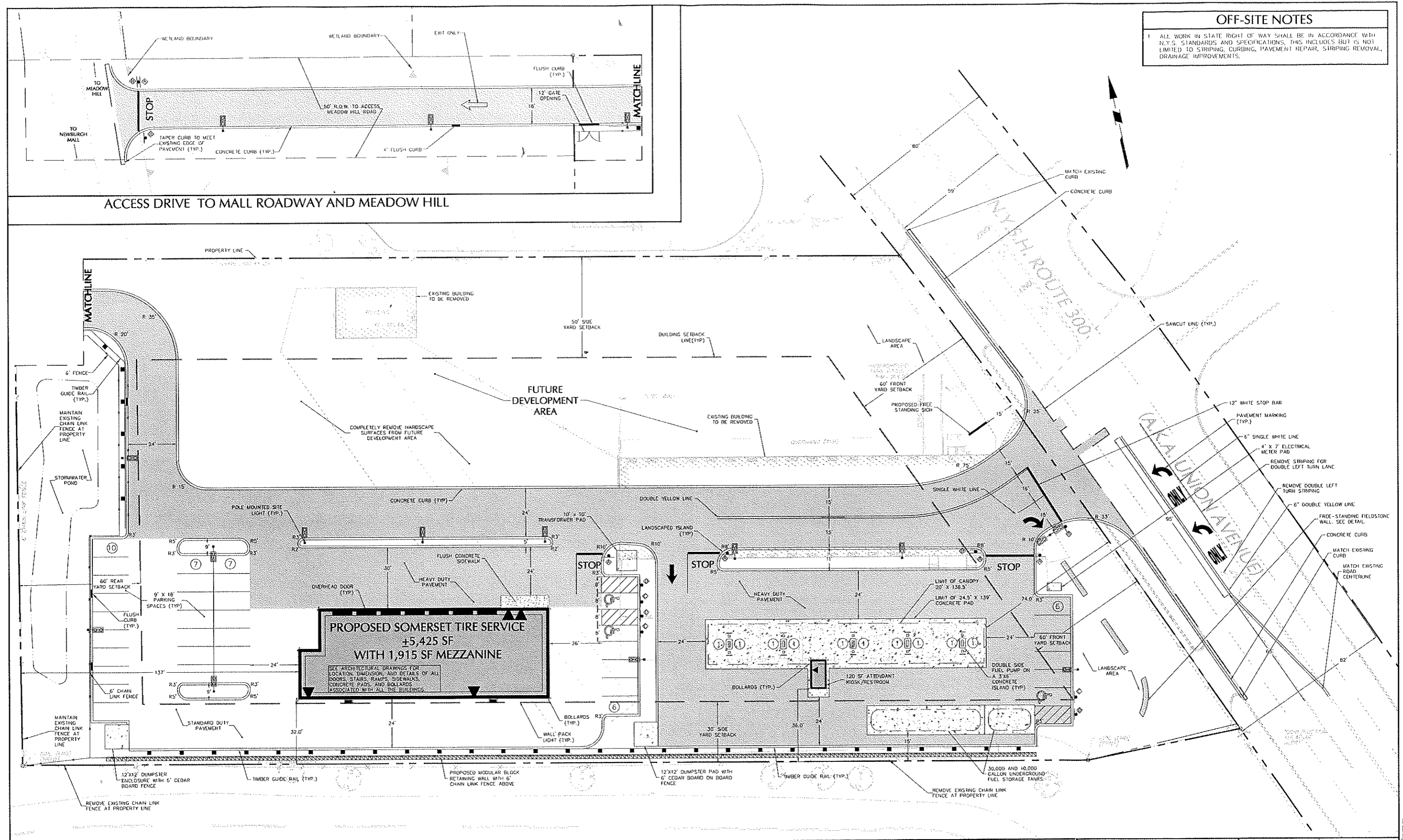


**OFF-SITE NOTES**

1 ALL WORK IN STATE RIGHT OF WAY SHALL BE IN ACCORDANCE WITH N.Y.S. STANDARDS AND SPECIFICATIONS, THIS INCLUDES BUT IS NOT LIMITED TO STRIPING, CURBING, PAVEMENT REPAIR, STRIPING REMOVAL, DRAINAGE IMPROVEMENTS.



Warning: It is a violation of the NYS Education Law Article 145 for any person, unless he is acting under the direction of a licensed Professional Engineer, to alter this item in any way.

Date	Description	No.
10/18/12	PLANNING BOARD SUBMISSION	2
4/4/12	ZONING BOARD OF APPEALS SUBMISSION	1
	Revisions	

JOHN D. PLANTE  
PROFESSIONAL ENGINEER NY Lic. No. 090145-1

**LANGAN**  
ENGINEERS & ARCHITECTS

555 Long Wharf Drive  
New Haven, CT 06511-6107  
P: 203 562 5771 F: 203 799 6142  
www.langan.com

Project  
**ROUTE 300 CENTER**  
1413 UNION AVENUE  
NEWBURGH NEW YORK

Drawing Title  
**SITE PLAN**

Project No.	140059701	Drawing No.	CS101-0101
Date	2/1/2012		
Scale	1"=20'		
Drn. By	RS		
Checked By	TSO		