

These photos follow a path from the entry on Lakeside Road up and into the property. Past the Barns and Sheds look north to see the Lower Field where the first Solar Array is promised. The photos then go up the hill along the main drive and then look north to the plowed Upper Field. Then turn south to see the D.E.C. Field, the photos end by looking down hill and over I-84.



Standing Near the Property Entrance looking South along Lakeside Road.



The Barn and Shed Area



The Lower Field from the Barn and Shed



The Road up to the Upper Fields from Barn and Shed Area.



The Upper Field looking north at planting Time.



The Upper Field looking North in high summer.



The D.E.C. Field looking south.



The Upper Field looking north and downhill back to the Barn and Shed Area.



The D.E.C Field looking west overlooking I-84.



The D.E.C Field looking south.



The tree-line at the D.E.C. Field looking south toward Amber Fields.



A close up of tree-line looking south toward Amber Fields.



4. The D.E.C. Field looking east toward Amber Fields.



5. The tree-line at the D.E.C. Field looking east toward Amber Fields.



6. A close up of the 50-foot buffer looking east toward Amber Fields.



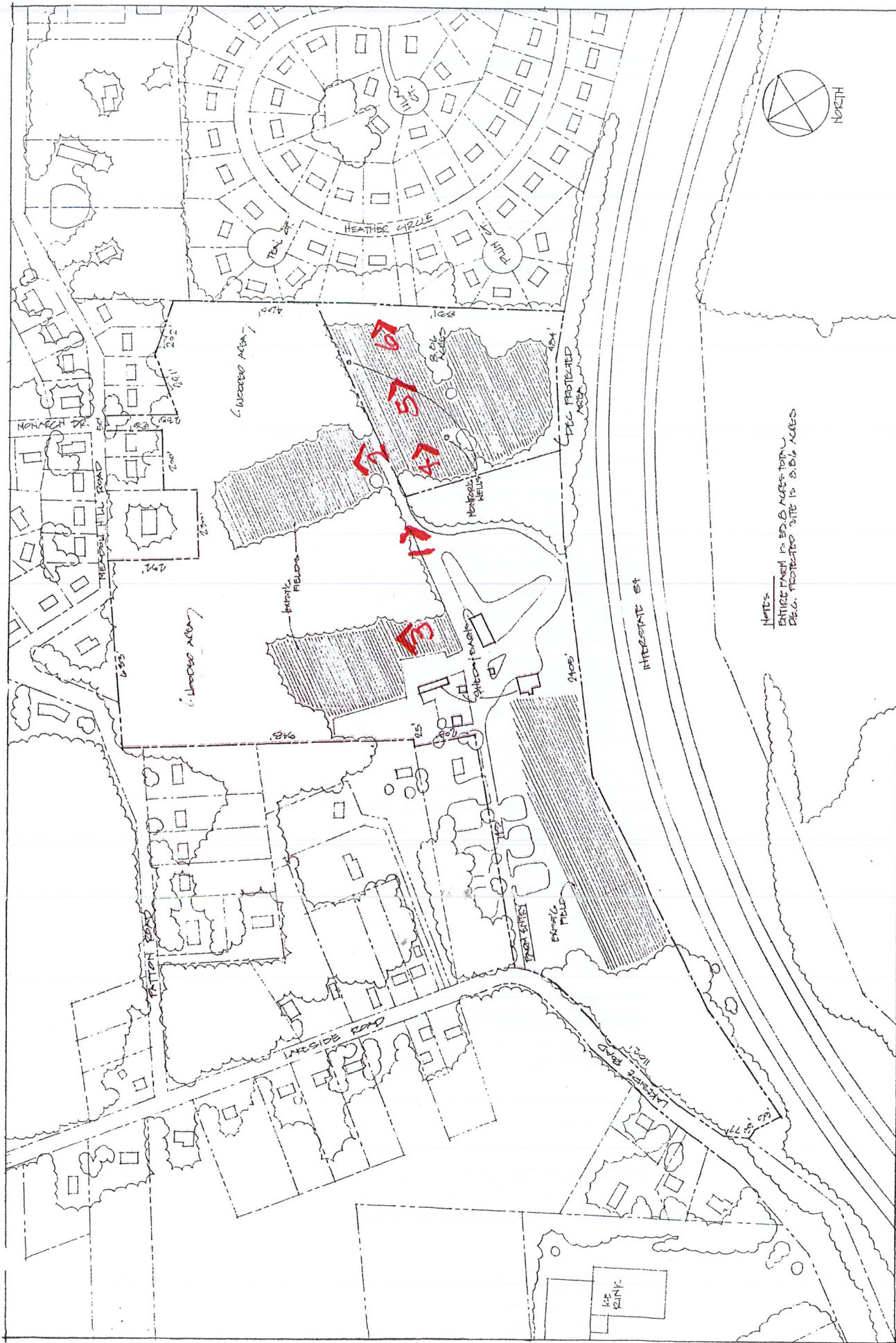
1. The road up to the upper fields from the barn and shed area.



2. The upper field looking north toward Meadow Hill Road.



3. The lower field looking north towards Patton Road.



NOTE:
ENTIRE FARM TO BE 8 ACRES TOTAL
DEVELOP RESTRICTED SITE TO 3.56 ACRES

SITE-1
8 JAN. 10

EXISTING FARM - PHOTOS
AND NEIGHBORING PROPERTY
SCALE: 1" = 200'-0"

REVISIONS	DATE	DESCRIPTION

DARRIGO SOLAR FARM
84 LAKESIDE ROAD, NEWBURGH, NY 12550
SBL: 86-1-916

JEFFREY LEASE
ARCHITECT
5010 CLYDE, NEWBURGH, NY 12550