

PROPOSED SITE PLAN FOR:
175 NORTH PLANK ROAD
TOWN OF NEWBURGH
NEW YORK

FOAM & WASH

LEGEND	
	EXISTING CONTOUR LINE
	EXISTING CONTOUR LINE TO BE REMOVED
	PROPOSED CONTOUR LINE
	SPOT ELEVATION
	T.O.R. ELEV. TOP OF RIM ELEVATION
	F.F. ELEV. FINISH FLOOR ELEVATION
	HANDICAPPED PARKING SPACE
	WALL MOUNTED LIGHT FIXTURE
	POLE MOUNTED LIGHT FIXTURE
	E.C.B. EXISTING CATCH BASIN
	N.C.B. NEW CATCH BASIN
	N.F.H. NEW FIRE HYDRANT
	N/F NOW OR FORMERLY
	E.U.P. EXISTING UTILITY POLE
	N.U.P. NEW UTILITY POLE
	NEW CHAIN LINK FENCE

ZONING DATA CHART				
TOWN OF NEWBURGH				
ZONE	B DISTRICT TAX MAP 178-4-5	REQUIRED	EXISTING	PROPOSED
LOT AREA		MIN 20,000 S.F.	1.02 ACRES 44,556 S.F.	1.02 ACRES 44,556 S.F.
LOT WIDTH		MIN 100'-0"	184'-8" ±	184'-8" ±
LOT DEPTH		MIN 125'-0"	200'-0" ±	200'-0" ±
FRONT YARD SETBACK		MIN 40'-0"	43'-6" ±	51'-6" ±
REAR YARD SETBACK		MIN 30'-0"	30'-0" ±	30'-0" ±
ONE SIDE YARD SETBACK		MIN 15'-0"	40'-0" ±	R-15-0" ± L-45'-1" ±
BOTH SIDE YARD SETBACKS		MIN 30'-0"	85'-1" ±	60'-4" ±
LOT COVERAGE BY BUILDING		MAX 50%	12.7% (5,664 S.F.)	14.1% (6,280 S.F.)
BUILDING HEIGHT		MAX 35'-0"	25'-0"	22'-10"
LOT SURFACE COVERAGE		MAX 72%	12% (32,205 S.F.)	64% (30,846 S.F.)
PARKING			15 SPACES	14 SPACES

GENERAL NOTES

1. THE PROPOSED WORK SHALL COMPLY WITH BUILDING CODE OF N.Y.S., LOCAL CODES AND ALL OTHER APPLICABLE CODES AND ORDINANCES.

INDEX TO DRAWINGS	
SHT. #	TITLE
S-1	PROPOSED SITE PLAN, ZONING DATA CHART, SITE LOCATION MAP, LEGEND AND DETAILS
S-2	PROPOSED LANDSCAPE PLAN, PLANTING SCHEDULE AND DETAILS
S-3	PROPOSED LIGHTING PLAN, LIGHTING SCHEDULE AND DETAILS
S-4	ELEVATIONS AND SIGN DETAILS

OWNER'S CONSENT

THE UNDERSIGNED OWNER OF THE PROPERTY HEREON STATES THAT HE IS FAMILIAR THESE PLANS, THEIR CONTENT AND LEGENDS, AND HEREBY CONSENTS TO ALL SAID TERMS AND CONDITIONS AS STATED THEREON.

SIGNED THIS _____ DAY OF _____, 20__

OWNER _____

PLANNING BOARD ENDORSEMENT

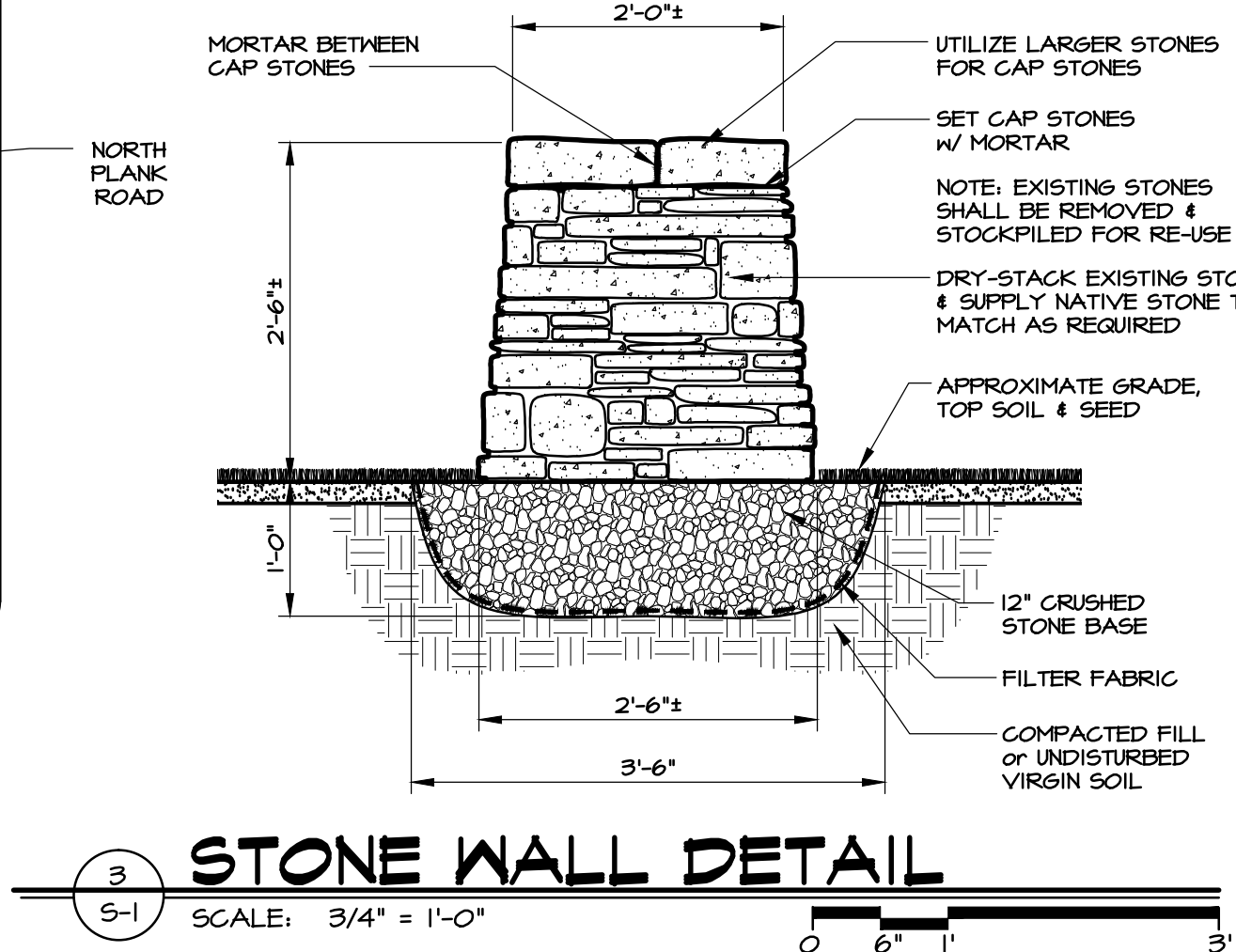
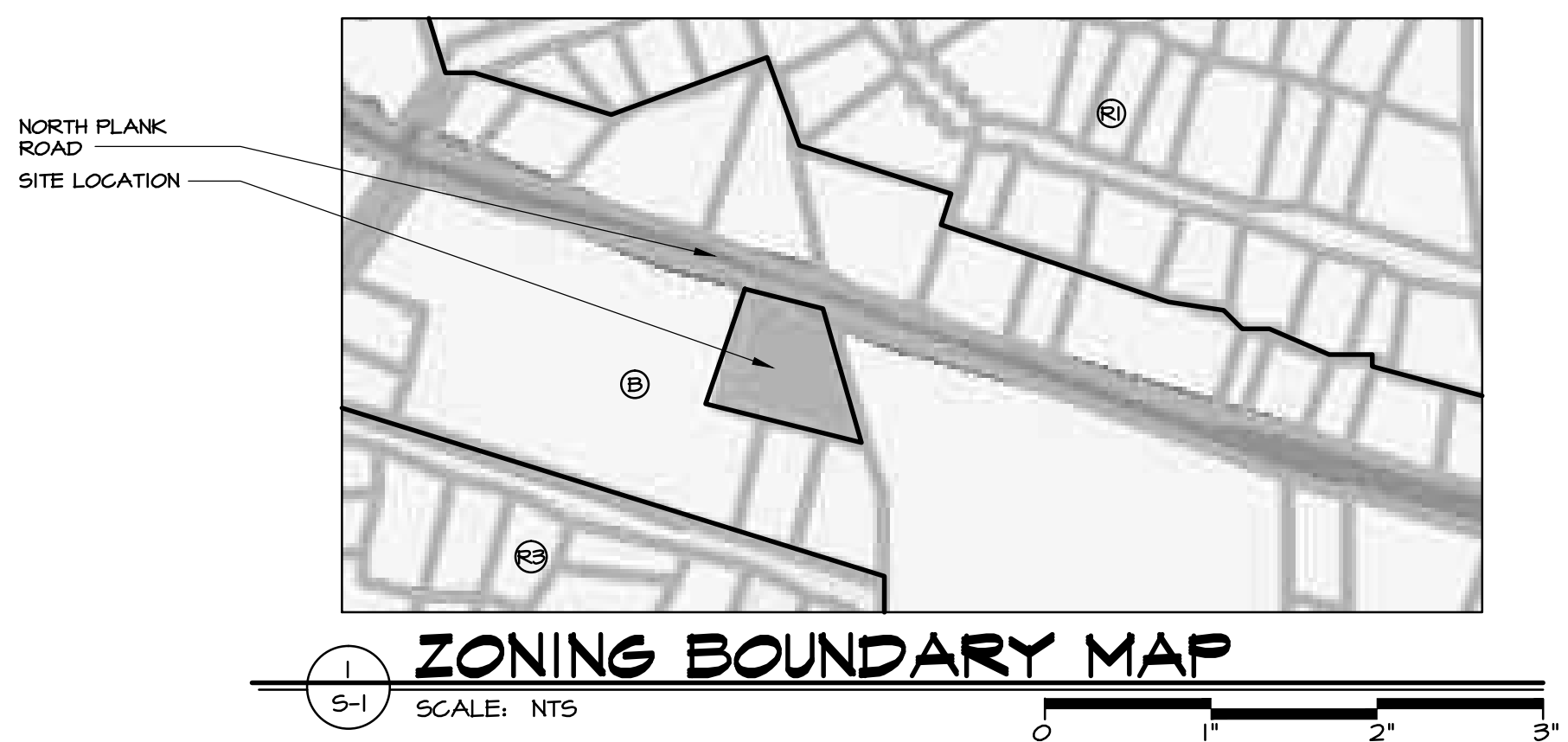
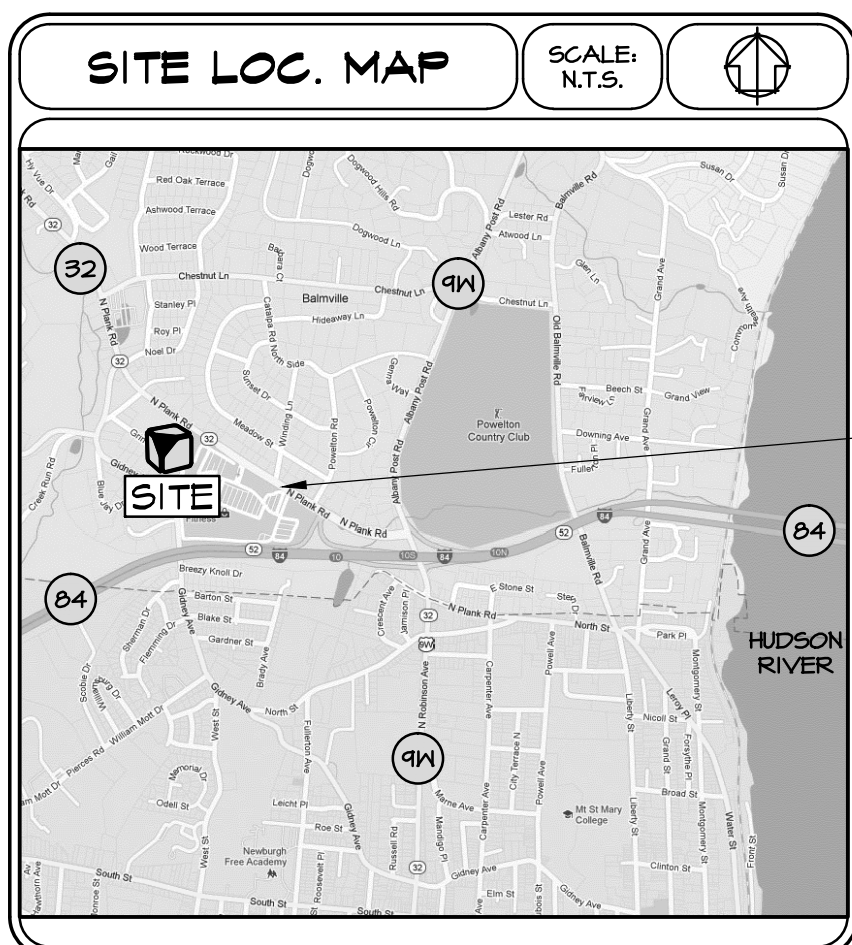
APPROVED BY RESOLUTION OF THE PLANNING BOARD OF THE TOWN OF LLOYD, SUBJECT TO ALL CONDITIONS AND REQUIREMENTS OF SAID RESOLUTION. ANY CHANGE, ERASURE, MODIFICATION, OR REVISION OF THIS PLOT AS APPROVED SHALL VOID THIS APPROVAL.

CHAIRMAN - TOWN PLANNING BOARD _____ DATE _____

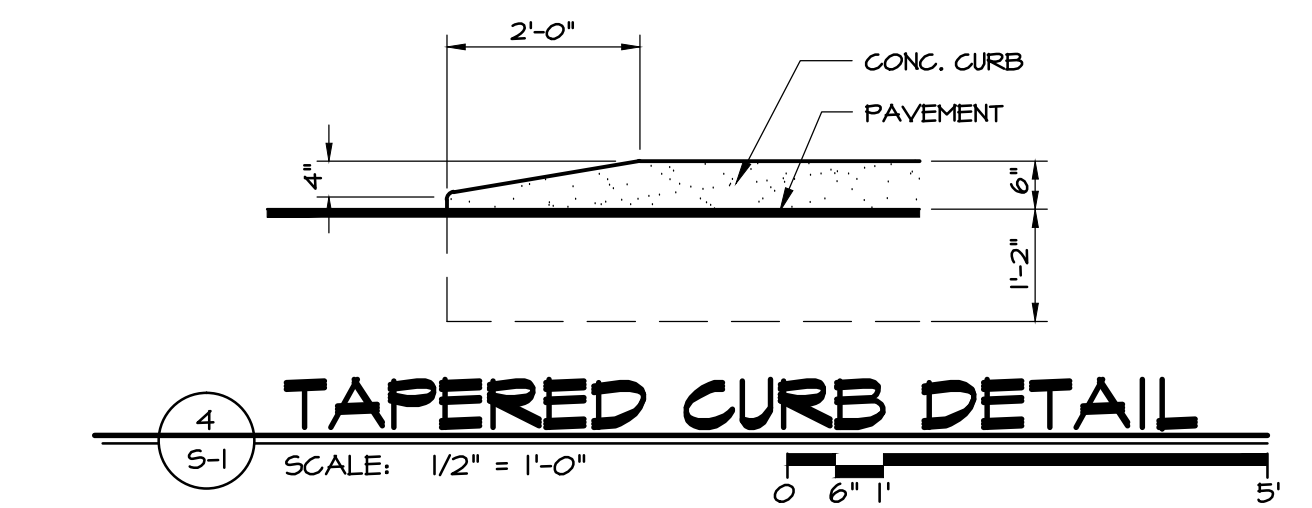
OWNER'S ENDORSEMENT

I HEREBY GRANT MY APPROVAL TO THIS PLOT AND THE PLANS SHOWN HEREON.

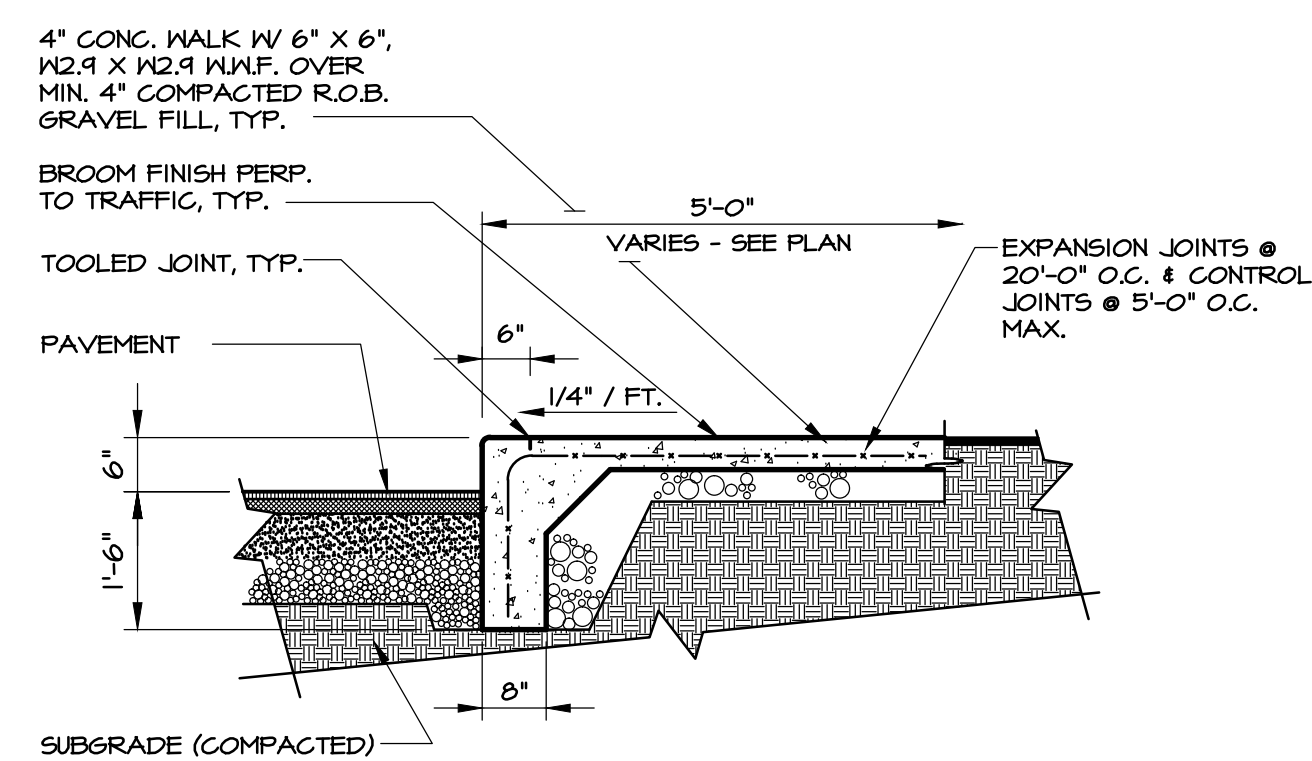
GARY BARIGHT, TGS ASSOCIATES, INC. _____ DATE _____



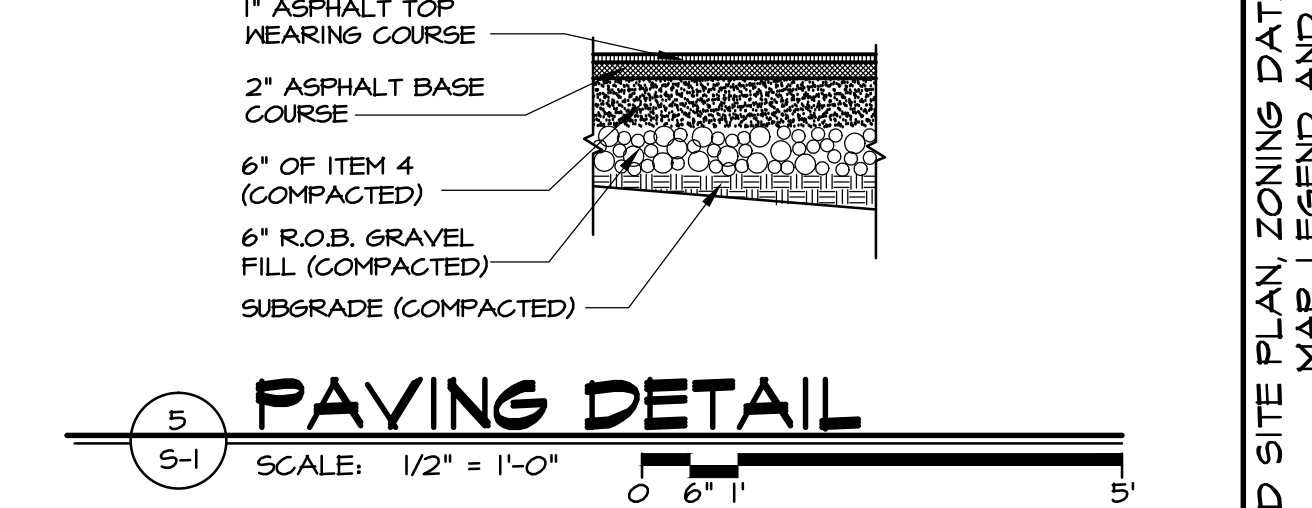
3 STONE WALL DETAIL
SCALE: 3/4" = 1'-0"



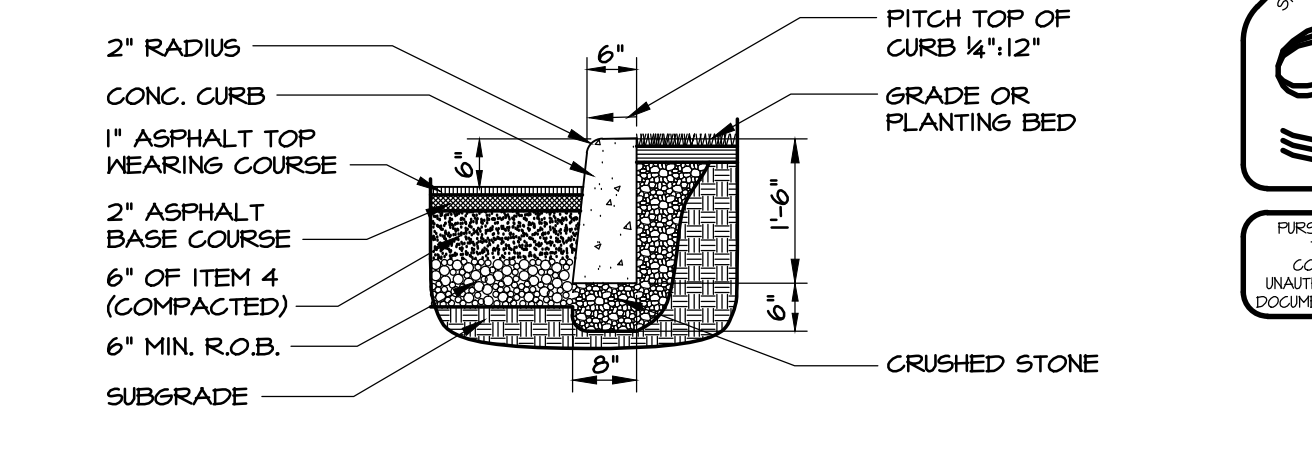
4 TAPERED CURB DETAIL
SCALE: 1/2" = 1'-0"



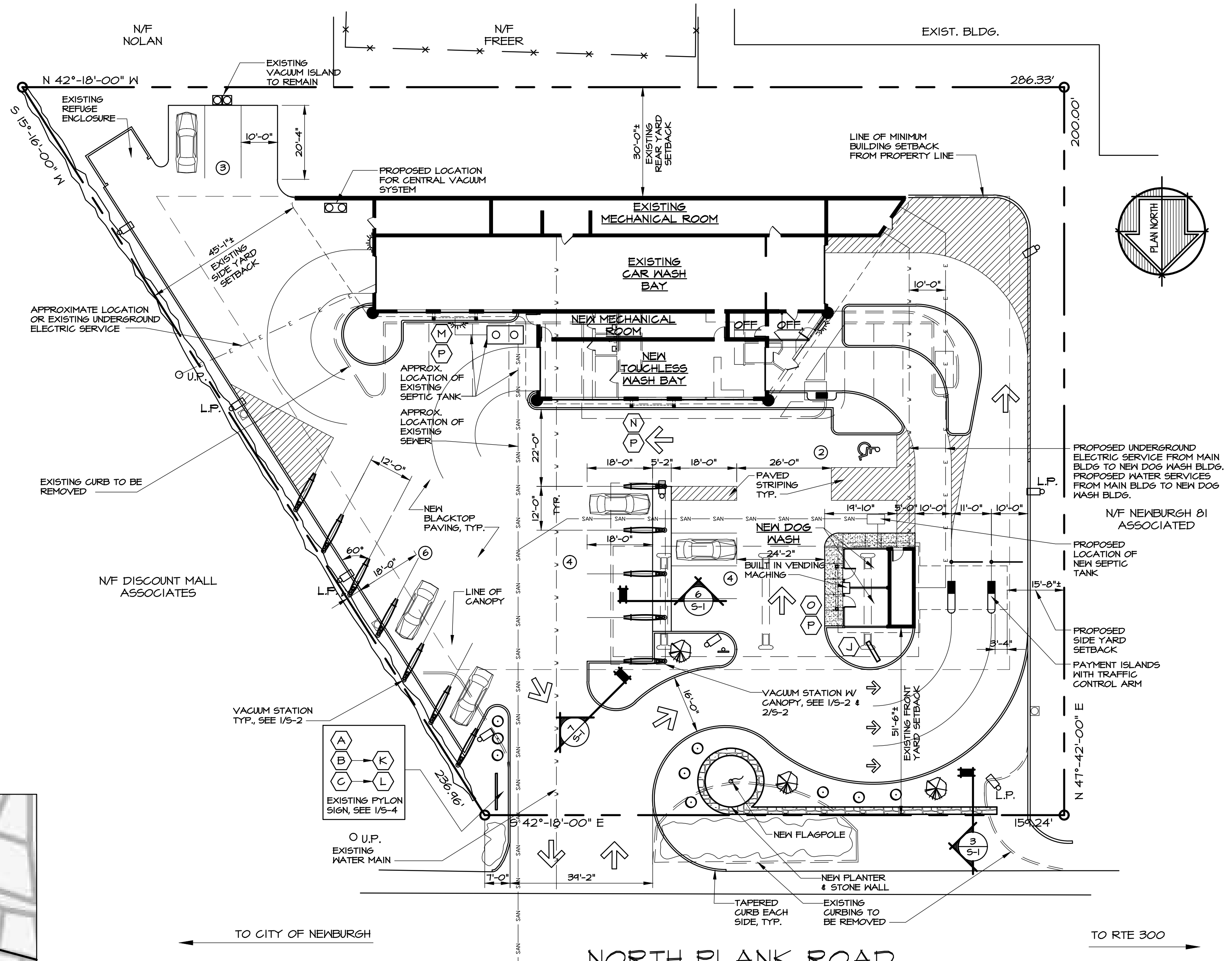
6 CURB / SIDEWALK DETAIL
SCALE: 1/2" = 1'-0"



5 PAVING DETAIL
SCALE: 1/2" = 1'-0"



7 CURB DETAIL
SCALE: 1/2" = 1'-0"



2 PROPOSED SITE PLAN
SCALE: 1" = 20'-0"

project no.	89-28
date	10 DEC 12
drawn by	JD / SM
revision	
description	
date	

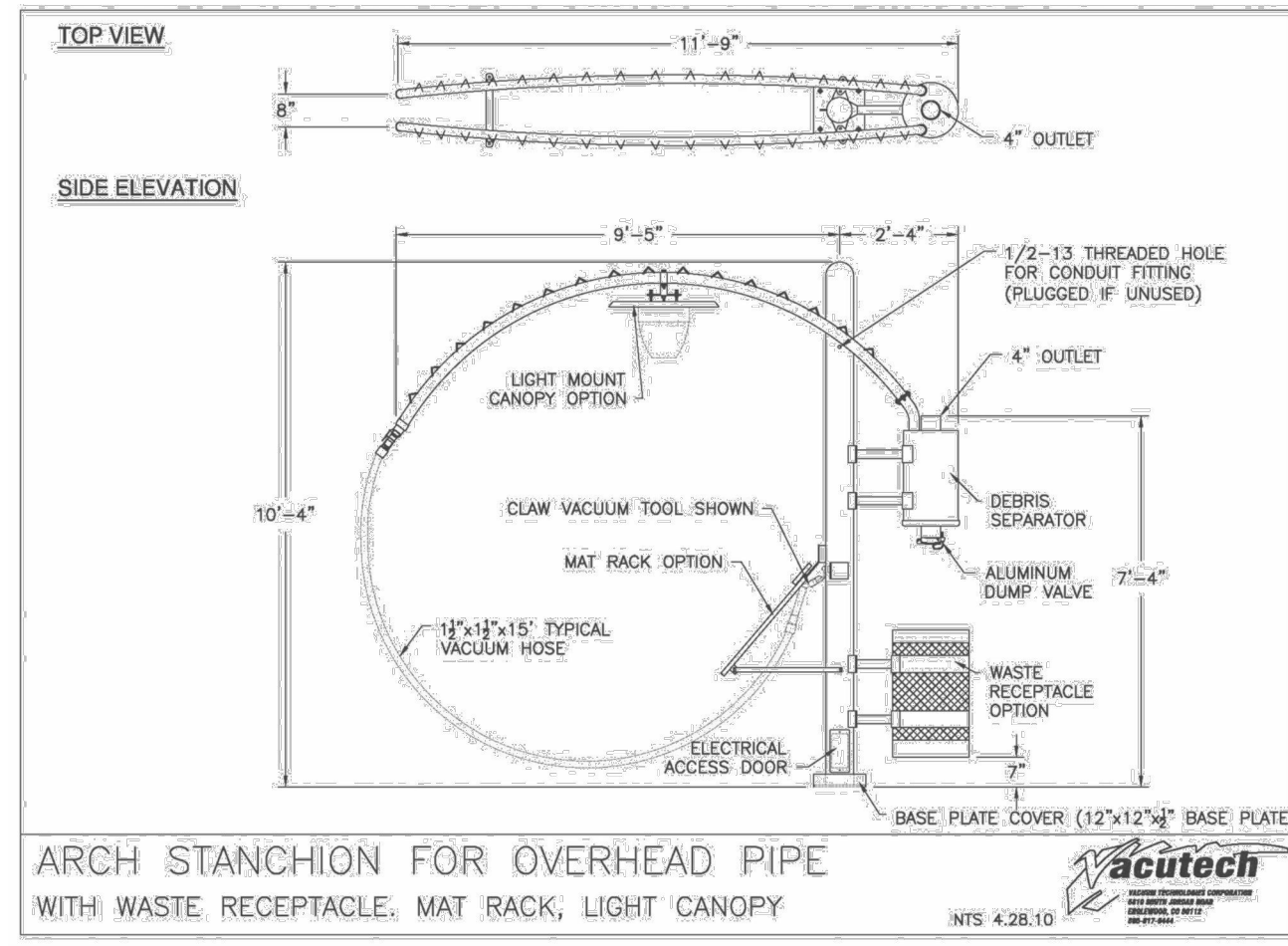
PROPOSED SITE PLAN FOR:
175 NORTH PLANK ROAD
TOWN OF NEWBURGH
NEW YORK

FOAM & WASH

PROPOSED SITE PLAN, ZONING DATA CHART, SITE LOCATION MAP, LEGEND AND DETAILS

MAURI ARCHITECTS PC
303 MILL STREET Poughkeepsie NY 12601 845-452.1030 mauri-architects.com

PERMIT TO SECTION 645 (B) OF THE REGULATION OF THE COMMISSIONER OF EDUCATION UNAUTHORIZED ALTERATIONS TO THIS DOCUMENT IS A VIOLATION OF THE LAW



Arch Vacuum Stanchion

for overhead vacuum piping system

VACUTECH
INVENTORS OF THE ARCH SYSTEM
"The Way Best"

PRODUCTS / SERVICES

- ✓ Tubing Vacuum Products
- ✓ Separators
- ✓ Vacuum Barriers
- ✓ Arch Vacuum Disinfectors
- ✓ Coin-Operated Separators & Stanchions
- ✓ Central Vacuum Systems
- ✓ Automatic Cleaning Equipment
- ✓ Accessories
- ✓ Energy Conservation
- ✓ Custom CAD Design Services
- ✓ Custom Designed Central Vacuum Systems
- ✓ Factory Installation Services
- ✓ Repair/Exchange Program
- ✓ Vacuum Distributions

"Vacutech is committed to being the leader in cutting edge vacuum technology & innovation to the commercial, industrial and vehicle care industries"

Arch vacuum stanchions create a unique look for any project. Arch stanchions distribute vacuum hoses and can act as a canopy. Stanchion arms place the vacuum hose at the parked vehicle, providing easy access for the user. Vacuum tools attach directly to stanchion, eliminating the need to roll hose. Awning faces between stanchions and provide shade over the parking area. Arch stanchions have an attached debris separator that removes large debris from entering vacuum piping system. Debris (such as keys, jewelry, pens, pencils, coins, moisture, etc.) will collect in separator and can be retrieved easily. Vacutech stocks standard arch stanchions in a variety of styles and colors, or can build custom arch stanchions to fit your specific needs.

Arches are powder coated to the color of your choice. Many color options are available for awnings, vacuum hoses, and vacuum tools.

Vacutec
The Systems People

WWW.VACUTECH.COM
800.937.9484
FAX: 303.927.7874

Vacuum Technologies Corporation
800 South Lewis Road, Cantonment, FL 32909

PLANTING SCHEDULE

KEY	QTY	BOTANICAL NAME	COMMON NAME	SIZE
BB	3	EUCONYMUS COMPACTUS	BURNING BUSH	3 GAL
CH	6	ILEX GLABRA COMPACTA	COMPACT INKBERRY HOLLY	3 GAL
NM	3	ACER CRIMSON SENTRY	CRIMSON SENTRY NORWAY MAPLE	3"-4" CAL

- PLANTING NOTES:**
- ALL PLANTING BEDS SHALL BE FILLED WITH RIVER ROCK, MINIMUM DEPTH SHALL BE 3", UNLESS NOTED OTHERWISE.
 - PLANT SIZE INDICATED SHALL BE AT TIME OF PLANTING.
 - INSTALL NEED BLOCK OR EQUAL BELOW ALL PLANTING BEDS.
 - LAWN AREAS SHALL BE SEEDED, FERTILIZED AND MULCHED WITH HAY OR STRAW.

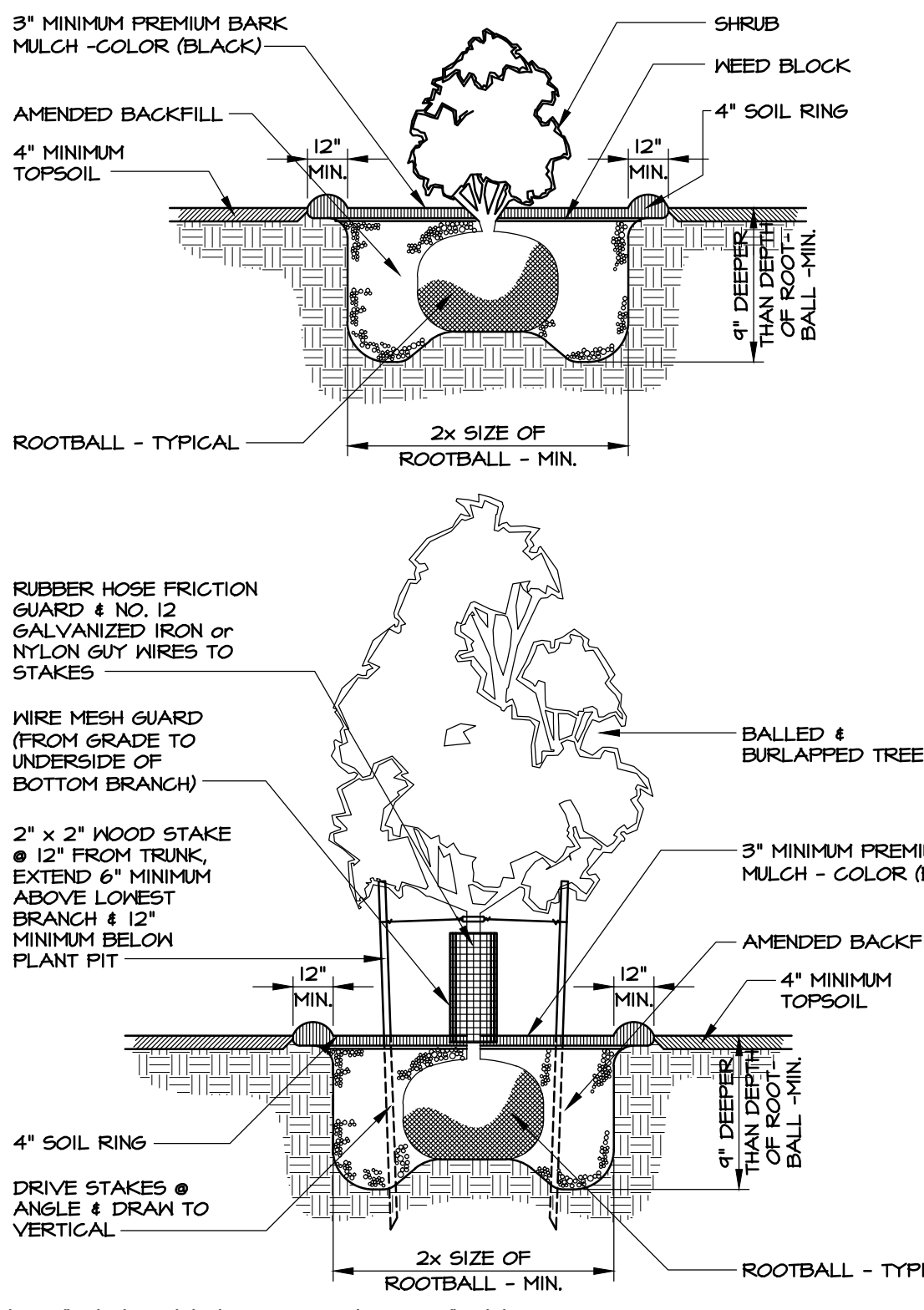
VACUUM DETAIL

SCALE: NTS



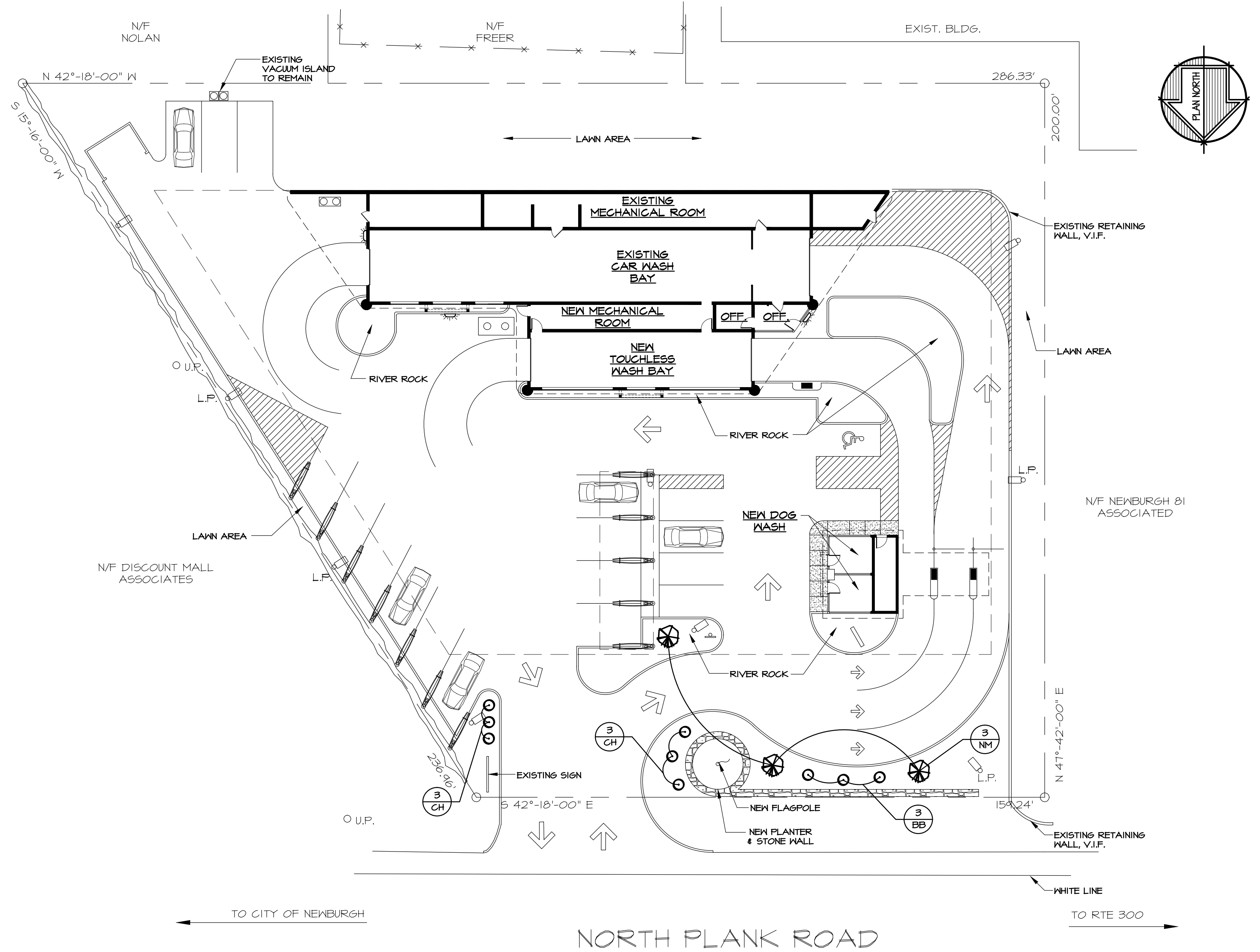
VACUUM CANOPY

SCALE: NTS



PLANTING DETAILS

SCALE: 1/4" = 1'-0"



PROPOSED LANDSCAPE PLAN

SCALE: 1" = 20'-0"

project no.
89-28

date
10 DEC 12

drawn by
JD / SM

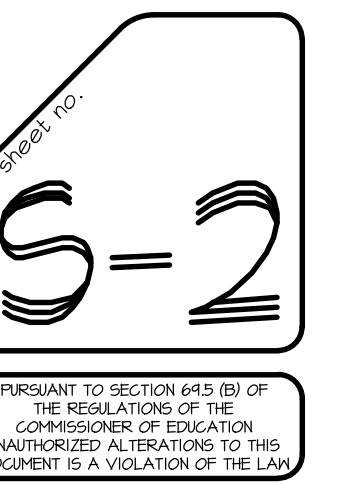
revision	date	description

PROPOSED SITE PLAN FOR:
175 NORTH PLANK ROAD
TOWN OF NEWBURGH
NEW YORK

FOAM & WASH

PROPOSED LANDSCAPE PLAN, PLANTING SCHEDULE AND DETAILS

MAURI ARCHITECTS PC
303 MILL STREET Poughkeepsie NY 12601 845.452.0930 mauri-architects.com

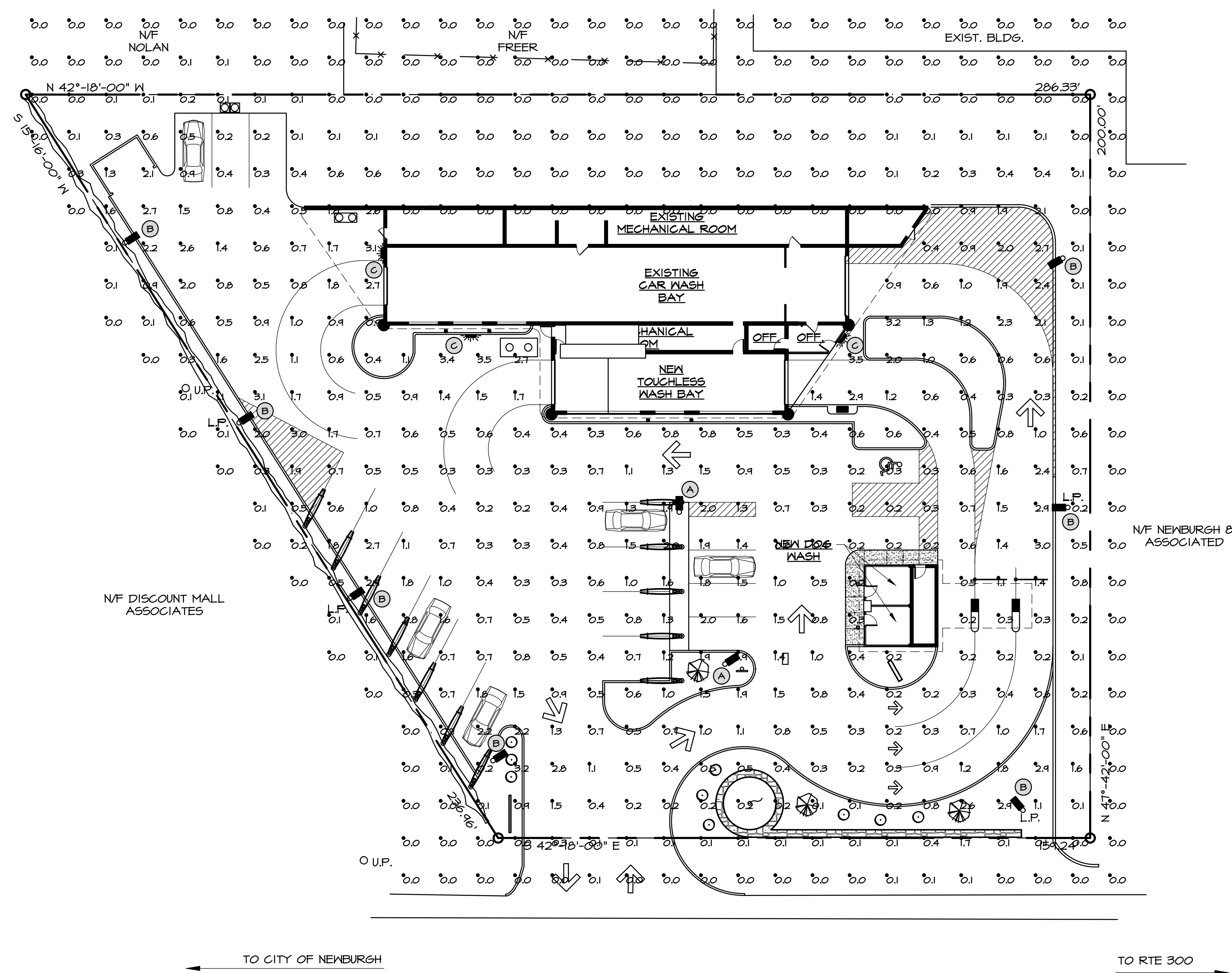
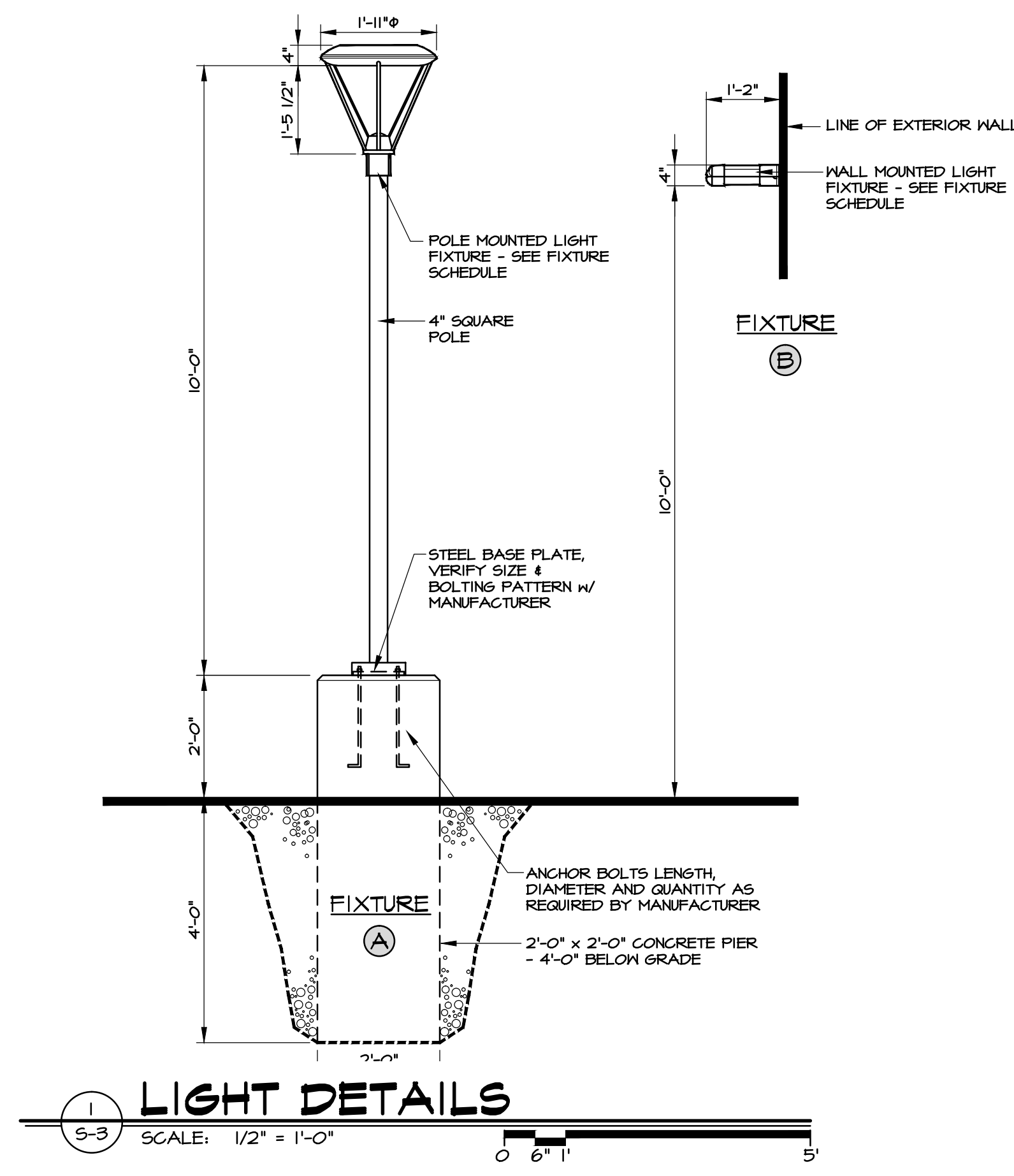
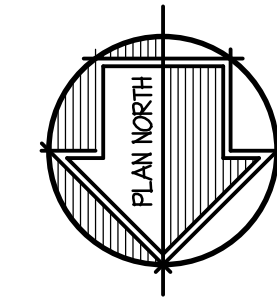


PERMIT TO SECTION 645 (8) OF THE REGULATIONS OF THE COMMISSIONER OF EDUCATION UNAUTHORIZED ALTERATIONS TO THIS DOCUMENT IS A VIOLATION OF THE LAW

project no.	89-28
date	10 DEC 12
drawn by	JD / SM
description	
revision	
date	

LIGHTING SCHEDULE				
KEY	QTY	MANUF.	TYPE	MOUNTING HGT
A	2	betaleD (ARE-EDR-5M-R4)	POLE LIGHT, TOTAL WATTS:94	12'-0" A.F.G. MAXIMUM
B	7	betaleD (SEC-EDG-4M-1M)	POLE LIGHT, TOTAL WATTS:324	12'-0" A.F.G. MAXIMUM
C	3	betaleD (ARE-EDR-4MB-R4)	WALL PACK, TOTAL WATTS:150	10'-0" A.F.G.

- LIGHTING NOTES**
1. FIXTURE MEETS INTERNATIONAL DARK SKY ASSOCIATION COMPLIANCE
 2. FIXTURE, POLE AND ACCESSORY FINISH TO BE BRONZE.
 3. ALL SITE LIGHTING SHALL BE TURNED OFF BETWEEN THE HOURS OF 12 PM AND 3:30 AM EXCLUDING NIGHT SECURITY LIGHTS (ALL TYPE B LIGHTS)



PROPOSED SITE PLAN FOR:
175 NORTH PLANK ROAD
TOWN OF NEWBURGH
NEW YORK

FOAM & WASH

PROPOSED LIGHTING PLAN, LIGHTING SCHEDULE AND DETAILS

MAURI ARCHITECTS PC
309 MILL STREET Poughkeepsie NY 12601 845.452.1030 mauri-architects.com

PERMIT NO. S-3

PERMIT TO SECTION 645 (B) OF THE REGULATIONS OF THE COMMISSIONER OF EDUCATION UNAUTHORIZED ALTERATIONS TO THIS DOCUMENT IS A VIOLATION OF THE LAW



1 PYLON SIGN

SCALE: N.T.S.



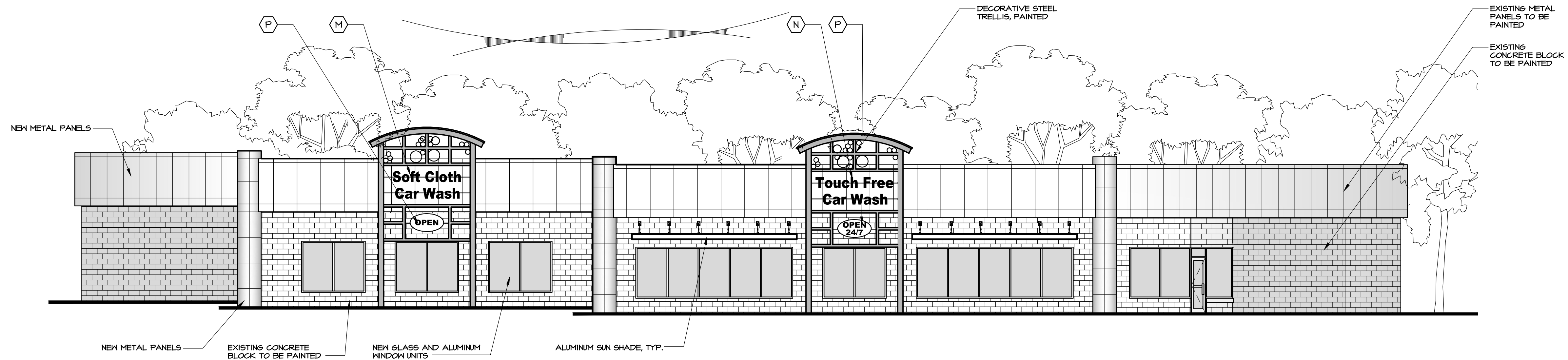
2 PROPOSED BUILDING CHANNEL LETTERS

SCALE: 1/4" = 1'-0"



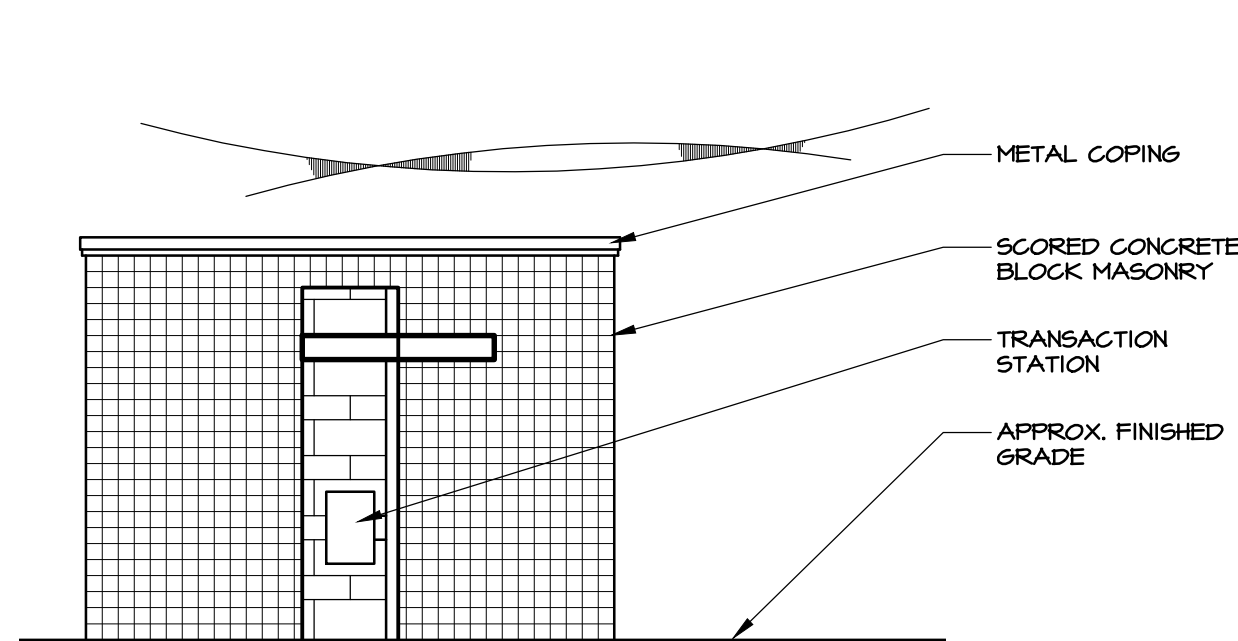
EXISTING SIGN CHART						
TYPE	#	SIGN DESCRIPTION	FT ²	FACES	TOTAL FT ²	REMARKS
A	1	FOAM & WASH PYLON SIGN	34 FT ²	2	68 FT ²	EXISTING TO REMAIN
B	1	MOBIL PYLON SIGN	30 FT ²	2	60 FT ²	TO BE REFACED, SEE SIGN 'K' DETAIL 1/5-4 ON THIS PAGE
C	1	GAS PRICES SIGN	14 FT ²	2	28 FT ²	TO BE REFACED, SEE SIGN 'L' DETAIL 1/5-4 ON THIS PAGE
D	1	MOBIL 'DRIVE ENGINE CLEAN' SIGN	15 FT ²	1	15 FT ²	TO BE REMOVED
E	1	MOBIL 'LITHIUM-ION BATTERIES' SIGN	6 FT ²	2	12 FT ²	TO BE REMOVED
F	1	MOBIL CIRCULAR PEGASUS BUILDING SIGN	14 FT ²	1	14 FT ²	TO BE REMOVED
G	1	MOBIL MART BUILDING SIGN	12 FT ²	1	12 FT ²	TO BE REMOVED
H	6	FOAM & WASH GAS PUMP MENU SIGN	5.25 FT ²	2	63 FT ²	TO BE REMOVED
I	2	MOBIL CANOPY CHANNEL LETTERS	6 FT ²	1	12 FT ²	TO BE REMOVED
J	1	FOAM & WASH MENU SIGN	50 FT ²	1	50 FT ²	EXISTING TO BE RELOCATED
GRAND TOTALS					334 FT ²	

PROPOSED SIGN CHART						
TYPE	#	SIGN DESCRIPTION	FT ²	FACES	TOTAL FT ²	REMARKS
A	1	FOAM & WASH PYLON SIGN	EXISTING	EXISTING	68 FT ²	EXISTING TO REMAIN
K	1	FOAM & WASH SOFT TOUCH PYLON SIGN	EXISTING	EXISTING	60 FT ²	REFACE, SEE DETAIL 1/5-4 ON THIS PAGE
L	1	FOAM & WASH DOG WASH PYLON SIGN	EXISTING	EXISTING	28 FT ²	REFACE, SEE DETAIL 1/5-4 ON THIS PAGE
M	1	SOFT CLOTH CAR WASH BUILDING CHANNEL LETTERS	25 FT ²	1	25 FT ²	PROPOSED
N	1	TOUCH FREE CAR WASH BUILDING CHANNEL LETTERS	21 FT ²	1	21 FT ²	PROPOSED
O	1	SELF SERVICE DOG WASH BUILDING CHANNEL LETTERS	32 FT ²	1	32 FT ²	PROPOSED
P	3	OPEN SIGN	8 FT ²	1	24 FT ²	PROPOSED
GRAND TOTALS					264 FT ²	



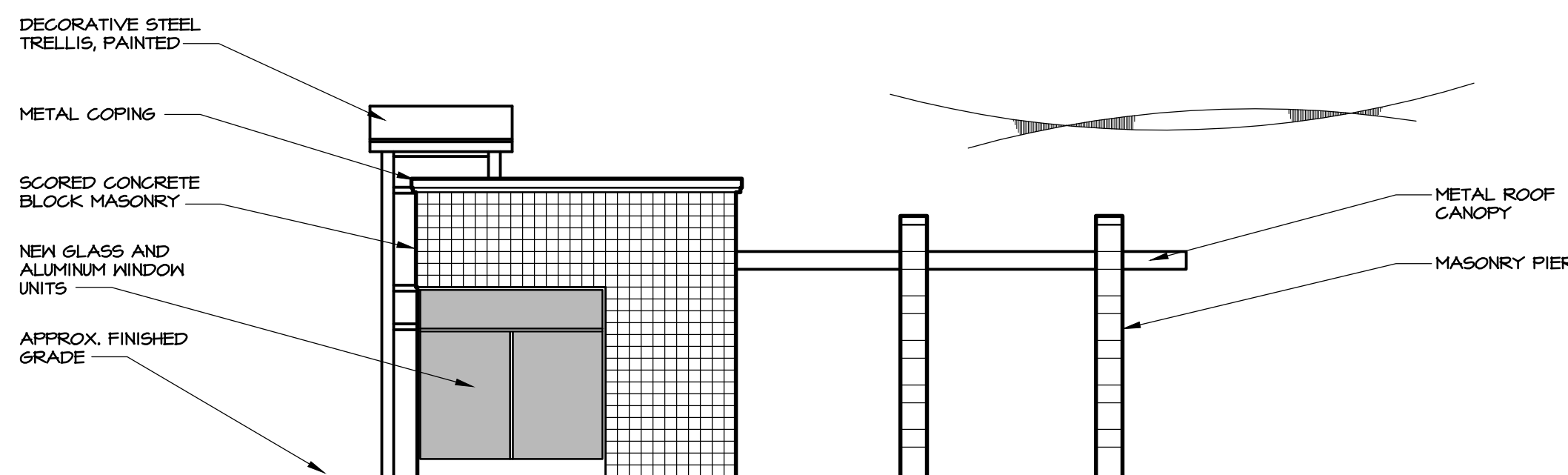
3 NORTH ELEVATION

SCALE: 1/8" = 1'-0"



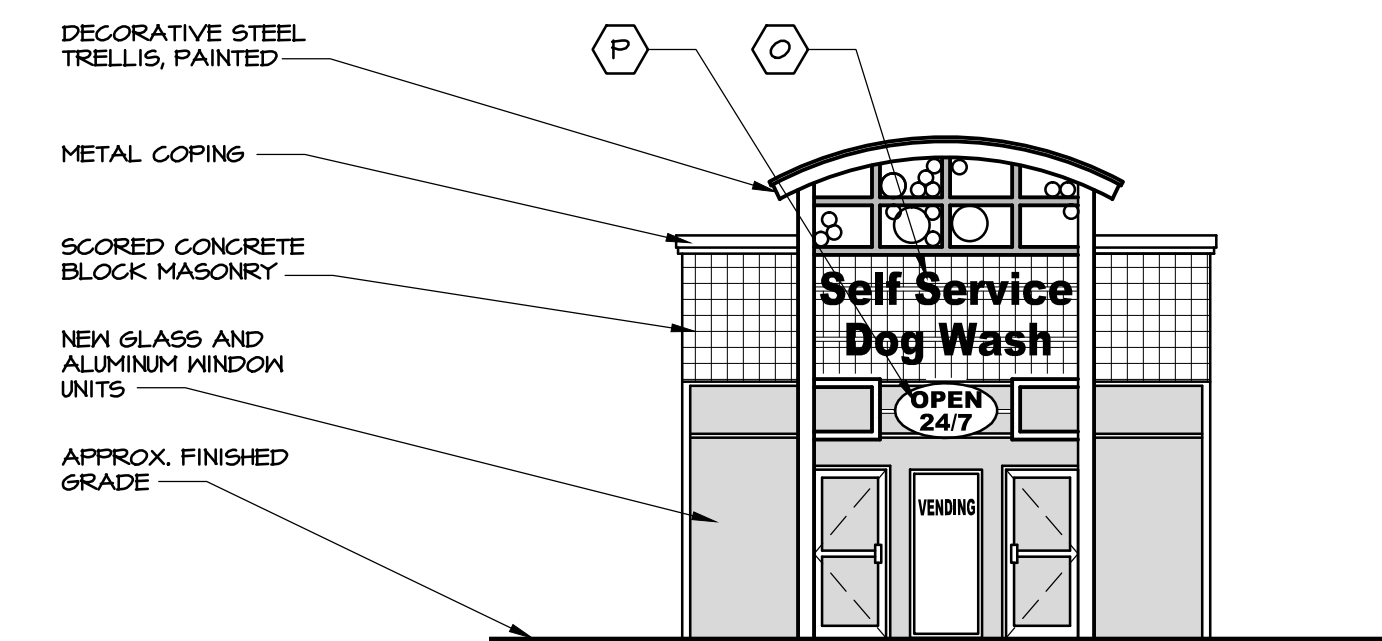
4 EAST ELEVATION (DOG WASH)

SCALE: 1/8" = 1'-0"



5 NORTH ELEVATION (DOG WASH)

SCALE: 1/8" = 1'-0"



6 WEST ELEVATION (DOG WASH)

SCALE: 1/8" = 1'-0"

project no. 89-28

date 10 DEC 12

drawn by JD / SM

revision	date	description

PROPOSED SITE PLAN FOR:
175 NORTH PLANK ROAD
TOWN OF NEWBURGH
NEW YORK

FOAM & WASH

ELEVATIONS

MAURI ARCHITECTS PC
303 MILL STREET POUGHKEEPSIE NY 12601 845.452.0330 mauri-architects.com

SCALE: 1/8" = 1'-0"

S=4

PERMIT TO SECTION 643.8(b) OF THE REGULATIONS OF THE COMMISSIONER OF EDUCATION UNAUTHORIZED ALTERATIONS TO THIS DOCUMENT IS A VIOLATION OF THE LAW