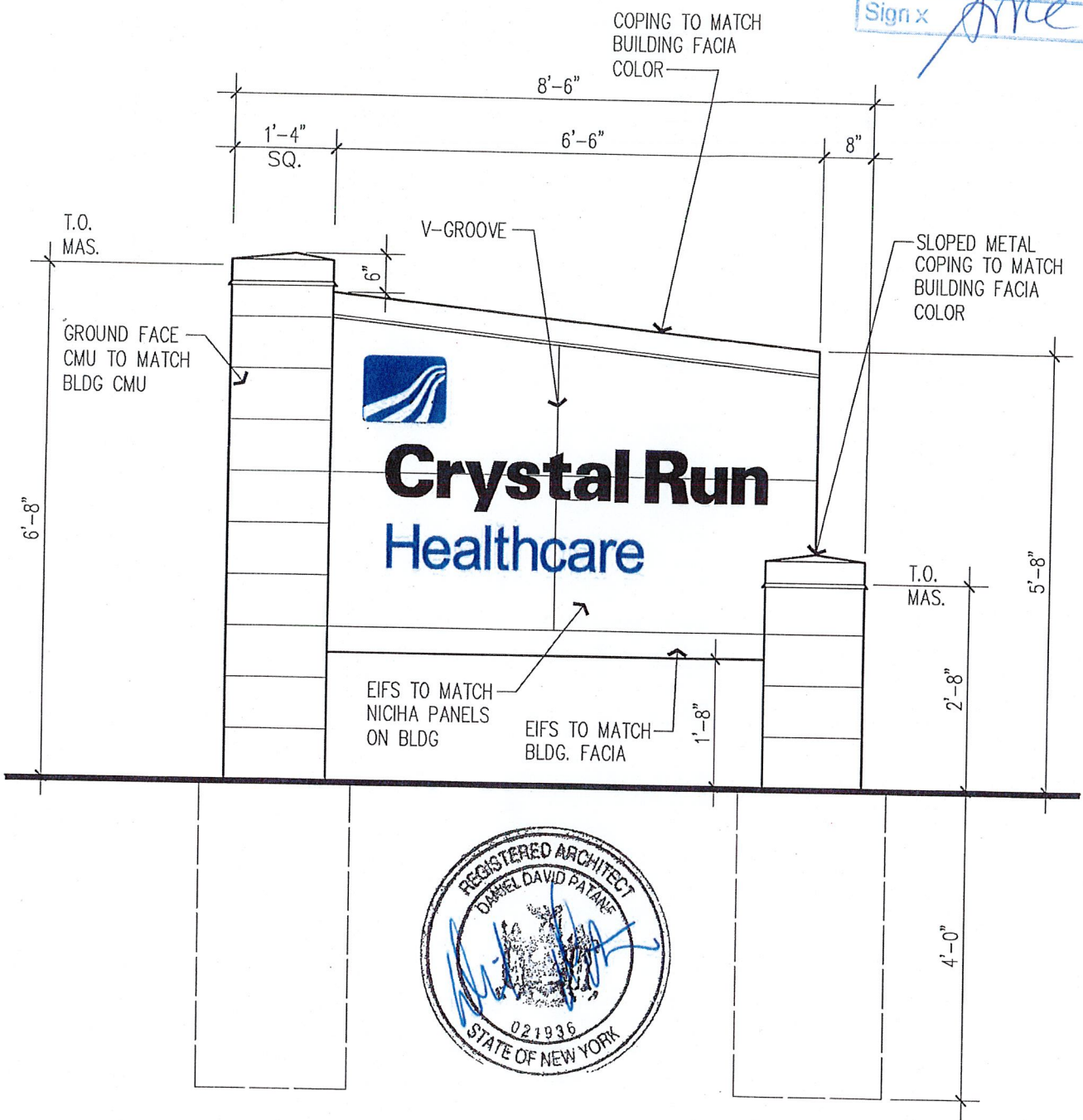


CODE COMPLIANCE DEPT.
 MAY 11 2015
 Sign x *[Signature]*



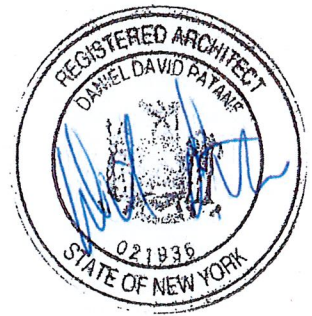
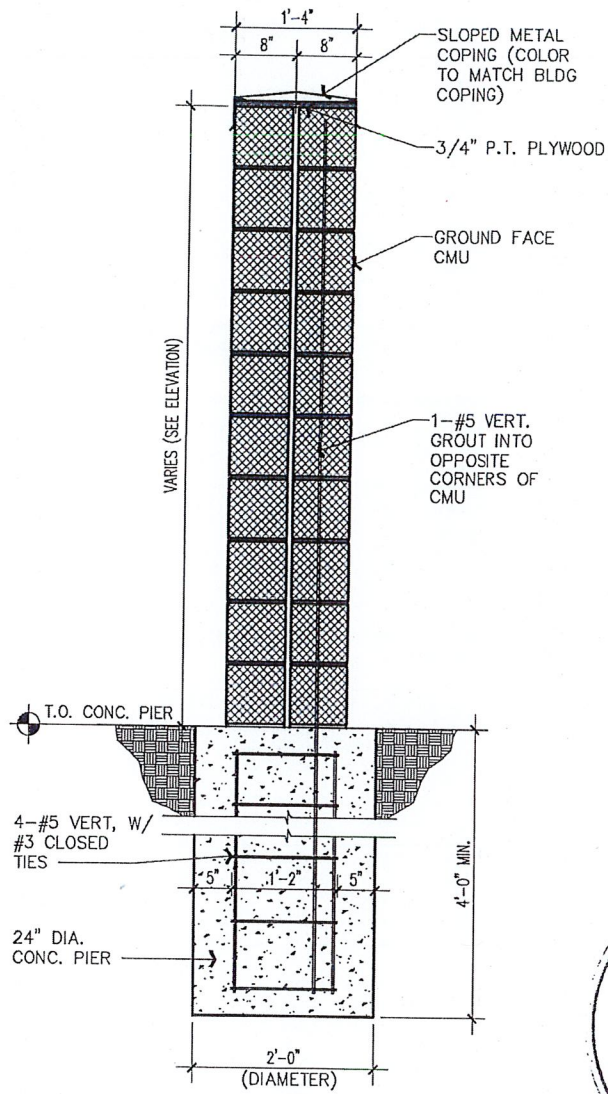
1 MONUMENT SIGN 1 - ELEVATION
 SCALE: 1/2"=1'-0"

hcp
 architects
 302 Washington Ave. Ext
 Albany, New York 12203
 P: 518-218-0614 F: 518-218-0612

NEW MEDICAL OFFICE BUILDING
CRYSTAL RUN HEALTHCARE
 NYS ROUTE 300
 NEWBURGH, NEW YORK

HCP JOB NO:
 1358-0
 SKETCH DATE:
 4/30/15

SHEET NUMBER:
 SKETCH NUMBER:
 SK-M1



1

MONUMENT SIGN 1 – SECTION

SCALE: 1/2"=1'-0"

hcp
architects

302 Washington Ave. Ext
Albany, New York 12203
P: 518-218-0614 F: 518-218-0612

NEW MEDICAL OFFICE BUILDING CRYSTAL RUN HEALTHCARE

NYS ROUTE 300

NEWBURGH, NEW YORK

HCP JOB NO:
1358-0

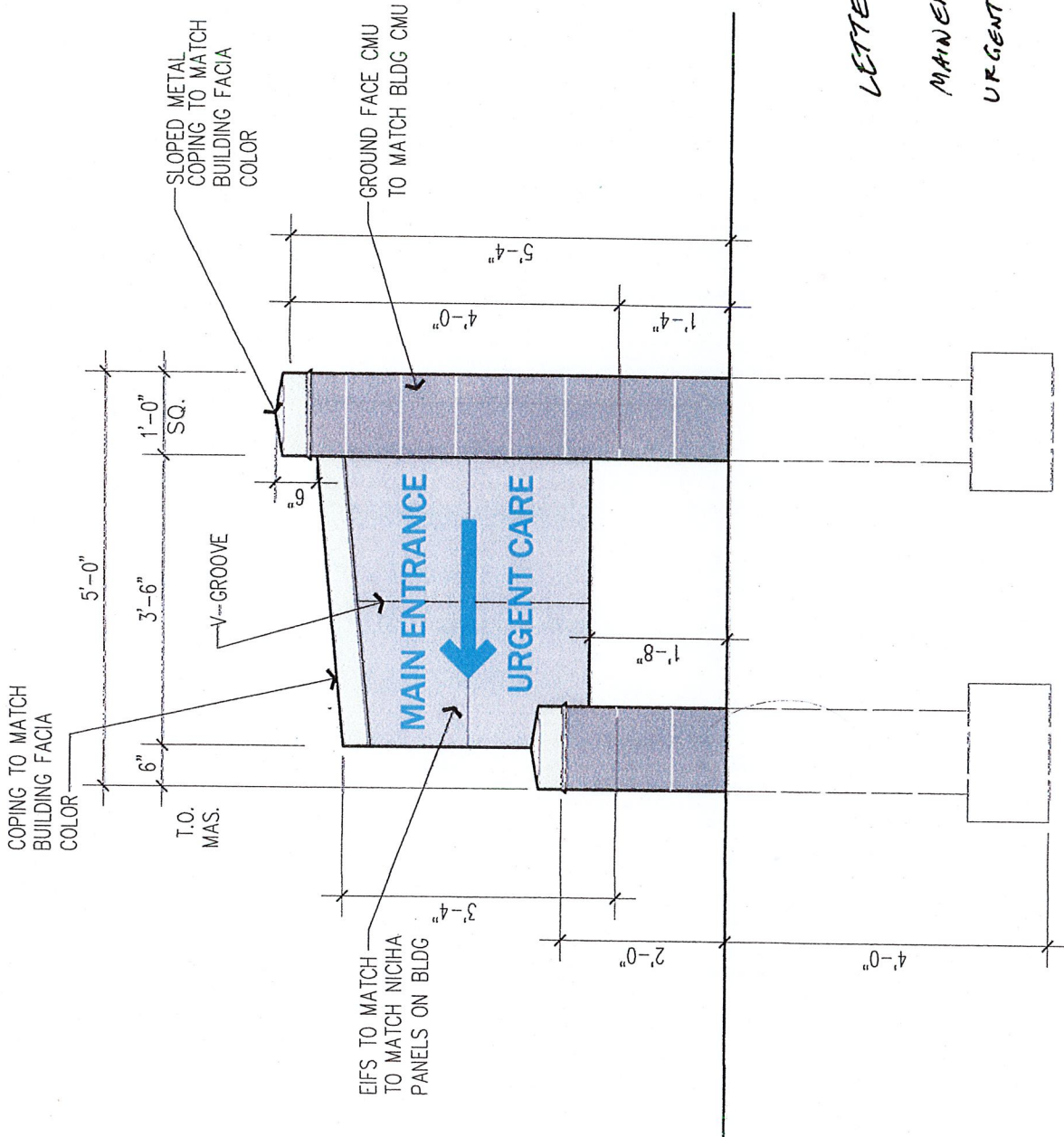
SHEET NUMBER:

SKETCH DATE:
4/30/15

SKETCH NUMBER:

SK-M2

yes D.F. as per
 Russ 4/1/15



LETTERING:

MAIN ENTRANCE .90 SQFT
 URGENT CARE .78 SQFT
 1.68 SQFT

DIRECTIONAL MONUMENT SIGN

MAIN entrance, w/pedestrian sign, D.I.F

GENERAL LANDSCAPING NOTES:

1. THE LANDSCAPE CONTRACTOR IS RESPONSIBLE TO LOCATE AND VERIFY LOCATION OF ALL PLANT MATERIALS. SITE FROM TO CONSTRUCTION OF INSTALLATION.
2. ALL PLANT MATERIALS SHALL BE DELIVERED TO THE PROJECT SITE TO THE CONTRACTOR'S RESPONSIBILITY FOR PROTECTION AND STORAGE.
3. ALL PLANT MATERIALS SHALL BE DELIVERED TO THE PROJECT SITE TO THE CONTRACTOR'S RESPONSIBILITY FOR PROTECTION AND STORAGE.
4. ALL LANDSCAPE INSTALLATIONS SHALL BE COMPLETED BY A SPECIFIC DATE FOR INSTALLATION AND TO TAKE ON AN INSTANTLY APPEARANCE (EXCEPT FOR PLANT MATERIALS) TO THE CONTRACTOR'S RESPONSIBILITY FOR PROTECTION AND STORAGE.
5. ALL PLANT MATERIALS SHALL BE DELIVERED TO THE PROJECT SITE TO THE CONTRACTOR'S RESPONSIBILITY FOR PROTECTION AND STORAGE.
6. ALL PLANT MATERIALS SHALL BE DELIVERED TO THE PROJECT SITE TO THE CONTRACTOR'S RESPONSIBILITY FOR PROTECTION AND STORAGE.
7. ALL PLANT MATERIALS SHALL BE DELIVERED TO THE PROJECT SITE TO THE CONTRACTOR'S RESPONSIBILITY FOR PROTECTION AND STORAGE.
8. ALL PLANT MATERIALS SHALL BE DELIVERED TO THE PROJECT SITE TO THE CONTRACTOR'S RESPONSIBILITY FOR PROTECTION AND STORAGE.
9. ALL PLANT MATERIALS SHALL BE DELIVERED TO THE PROJECT SITE TO THE CONTRACTOR'S RESPONSIBILITY FOR PROTECTION AND STORAGE.
10. ALL PLANT MATERIALS SHALL BE DELIVERED TO THE PROJECT SITE TO THE CONTRACTOR'S RESPONSIBILITY FOR PROTECTION AND STORAGE.
11. ALL PLANT MATERIALS SHALL BE DELIVERED TO THE PROJECT SITE TO THE CONTRACTOR'S RESPONSIBILITY FOR PROTECTION AND STORAGE.
12. ALL PLANT MATERIALS SHALL BE DELIVERED TO THE PROJECT SITE TO THE CONTRACTOR'S RESPONSIBILITY FOR PROTECTION AND STORAGE.
13. ALL PLANT MATERIALS SHALL BE DELIVERED TO THE PROJECT SITE TO THE CONTRACTOR'S RESPONSIBILITY FOR PROTECTION AND STORAGE.

LANDSCAPING SCHEDULING

SEASON	PERIOD	ACTIVITY	PERIOD	ACTIVITY	PERIOD	ACTIVITY
SPRING	APRIL - MAY	INSTALLATION OF PLANT MATERIALS	FALL	APRIL - MAY	INSTALLATION OF PLANT MATERIALS	APRIL - MAY
SUMMER	JUNE - AUGUST	MAINTENANCE OF PLANT MATERIALS	WINTER	NOVEMBER - FEBRUARY	MAINTENANCE OF PLANT MATERIALS	NOVEMBER - FEBRUARY

TEMPORARY SEEDING DISTURBED AREAS

1. ALL DISTURBED AREAS SHALL BE SEEDING WITH A MIXTURE OF 50% BENTON GRASS AND 50% PERENNIAL GRASS.

2. SEEDING SHALL BE COMPLETED WITHIN 14 DAYS OF DISTURBANCE.

3. SEEDING SHALL BE COMPLETED WITHIN 14 DAYS OF DISTURBANCE.

4. SEEDING SHALL BE COMPLETED WITHIN 14 DAYS OF DISTURBANCE.

5. SEEDING SHALL BE COMPLETED WITHIN 14 DAYS OF DISTURBANCE.

PERMANENT LAWN SEEDING AREAS

1. ALL PERMANENT LAWN AREAS SHALL BE SEEDING WITH A MIXTURE OF 50% BENTON GRASS AND 50% PERENNIAL GRASS.

2. SEEDING SHALL BE COMPLETED WITHIN 14 DAYS OF DISTURBANCE.

3. SEEDING SHALL BE COMPLETED WITHIN 14 DAYS OF DISTURBANCE.

4. SEEDING SHALL BE COMPLETED WITHIN 14 DAYS OF DISTURBANCE.

5. SEEDING SHALL BE COMPLETED WITHIN 14 DAYS OF DISTURBANCE.

STORMWATER AREA AND PERMEABLE SEEDING

1. ALL STORMWATER AREAS SHALL BE SEEDING WITH A MIXTURE OF 50% BENTON GRASS AND 50% PERENNIAL GRASS.

2. SEEDING SHALL BE COMPLETED WITHIN 14 DAYS OF DISTURBANCE.

3. SEEDING SHALL BE COMPLETED WITHIN 14 DAYS OF DISTURBANCE.

4. SEEDING SHALL BE COMPLETED WITHIN 14 DAYS OF DISTURBANCE.

5. SEEDING SHALL BE COMPLETED WITHIN 14 DAYS OF DISTURBANCE.

PLANTING SCHEDULE

PLANTING SCHEDULE	PLANTING SCHEDULE	PLANTING SCHEDULE
SPRING PLANTING	FALL PLANTING	SPRING PLANTING
APRIL - MAY	SEPTEMBER - OCTOBER	APRIL - MAY
APRIL - MAY	SEPTEMBER - OCTOBER	APRIL - MAY

CONTRACTOR SHALL MAINTAIN A RECORD OF ALL PLANTING ACTIVITIES.

CONTRACTOR SHALL MAINTAIN A RECORD OF ALL PLANTING ACTIVITIES.

CONTRACTOR SHALL MAINTAIN A RECORD OF ALL PLANTING ACTIVITIES.

CONTRACTOR SHALL MAINTAIN A RECORD OF ALL PLANTING ACTIVITIES.

CONTRACTOR SHALL MAINTAIN A RECORD OF ALL PLANTING ACTIVITIES.

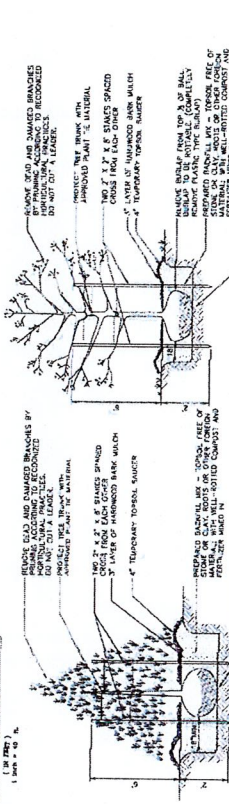
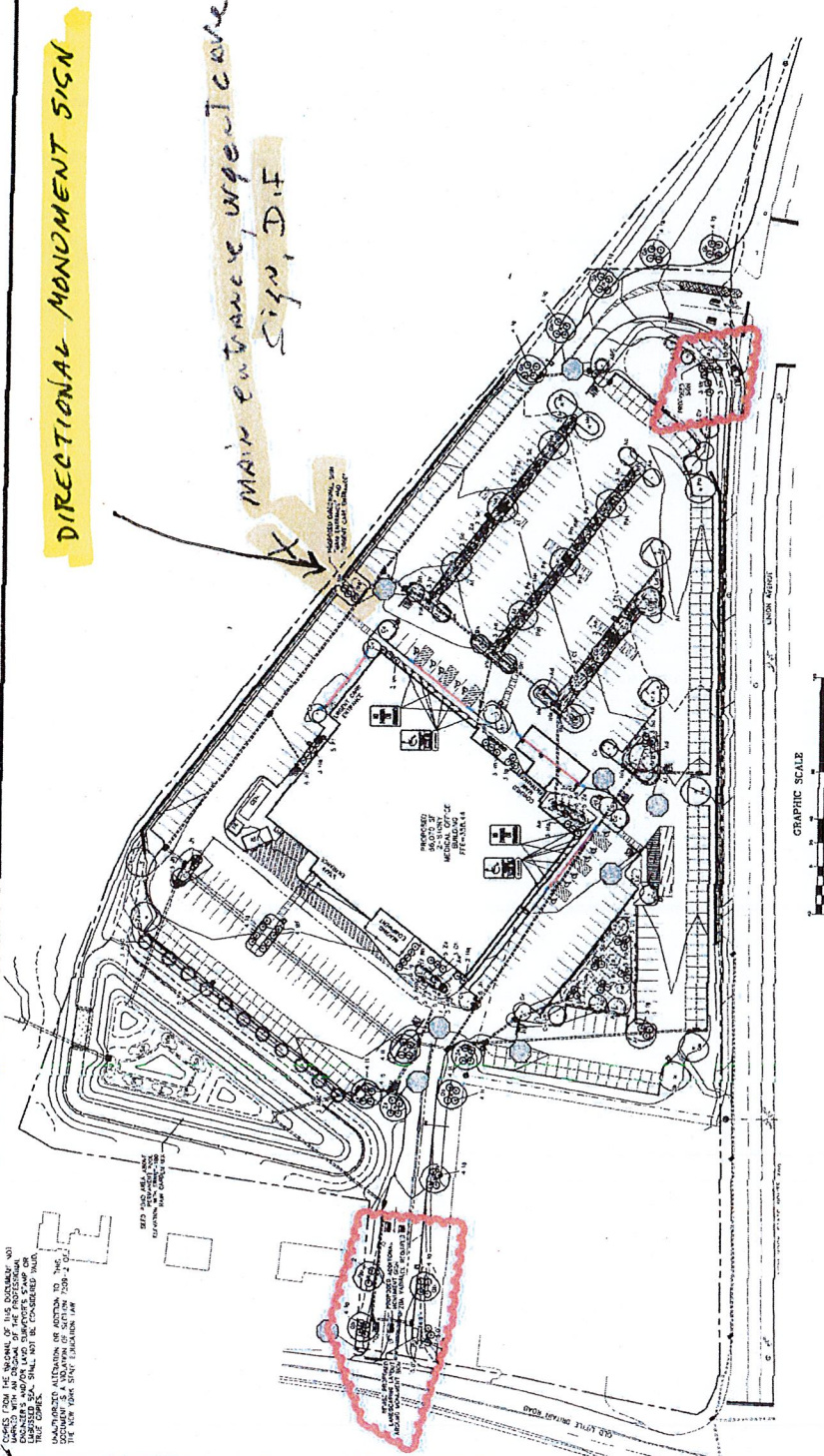
CONTRACTOR SHALL MAINTAIN A RECORD OF ALL PLANTING ACTIVITIES.

CONTRACTOR SHALL MAINTAIN A RECORD OF ALL PLANTING ACTIVITIES.

CONTRACTOR SHALL MAINTAIN A RECORD OF ALL PLANTING ACTIVITIES.

CONTRACTOR SHALL MAINTAIN A RECORD OF ALL PLANTING ACTIVITIES.

CONTRACTOR SHALL MAINTAIN A RECORD OF ALL PLANTING ACTIVITIES.



EVERGREEN TREE PLANTING DETAIL NOT TO SCALE

DECIDUOUS TREE PLANTING DETAIL NOT TO SCALE

SHRUB PLANTING DETAIL NOT TO SCALE

NO.	SYMBOL	SYMBOL NAME	QUANTITY	PLANT SPECIES	PLANT SIZE	PLANTING DATE	PLANTING LOCATION
1	(Symbol)
2	(Symbol)
3	(Symbol)
4	(Symbol)
5	(Symbol)
6	(Symbol)
7	(Symbol)
8	(Symbol)
9	(Symbol)
10	(Symbol)

GROUND COVER/PERENNIAL PLANTING DETAIL NOT TO SCALE

SITE PLANT SCHEDULE

LANC & TULLY
 LANDSCAPING AND SIGNAGE/STRIPING
 1000 W. 10TH ST. SUITE 100
 NEWBURGH, NY 10979
 TEL: 845.261.1200

CRH REALTY VIII, LLC
 1000 W. 10TH ST. SUITE 100
 NEWBURGH, NY 10979
 TEL: 845.261.1200