

- NOTES:**
1. THE OWNER/OPERATOR HAS A CURRENT NY DEC. SPDES PERMIT FOR DISCHARGES ASSOCIATED WITH CONSTRUCTION ACTIVITY (PERMIT NO. NYR10B153).
 2. THE CONTRACTOR MUST NOTIFY THE UNDERGROUND UTILITIES PROTECTIVE ORGANIZATION (1-800-982-7862) TO HAVE ANY EXISTING UTILITIES LOCATED AND MARKED AT LEAST TWO FULL BUSINESS DAYS PRIOR TO ANY EXCAVATION, BUSTING OR DRILLING. NON-MEMBER UTILITIES MUST BE CONTACTED SEPARATELY.
 3. IT IS THE OWNER/OPERATOR'S RESPONSIBILITY TO OBTAIN ANY REQUIRED PERMITS FROM FEDERAL, STATE OR LOCAL AUTHORITIES.
 4. THE DESIGN/CONSTRUCTION OF THIS EROSION CONTROL PLAN WAS SUPERVISED BY WPA ACQUISITION CORP. (DATED APRIL 14, 2010) PREPARED FOR THE APPLICANT BY SPENCER S. HALL, NYS LIC. NO. 49138.
 5. TOTAL PARCEL AREA = 10.37 ACRES +/-.
 6. OWNER/APPLICANT: WPA ACQUISITION CORP. MARLBORO NY 12542
 7. AREA TO BE GRADED = 4.0 ACRES +/-.
 8. ZONING DISTRICT: B
 9. THE UNDERGROUND UTILITY LOCATIONS AND DEPTHS WERE OBTAINED FROM GARDNER RIDGE ASSOCIATES AND WPA ACQUISITION CORP., DATED JULY 20, 1986 AND FILED IN THE ORANGE COUNTY CLERK'S OFFICE JULY 24, 1986 AS MAP NO. 142-96.

THE OWNER/OPERATOR HAS A CURRENT NY DEC. SPDES PERMIT FOR DISCHARGES ASSOCIATED WITH CONSTRUCTION ACTIVITY (PERMIT NO. NYR10B153). THE CONTRACTOR MUST NOTIFY THE UNDERGROUND UTILITIES PROTECTIVE ORGANIZATION (1-800-982-7862) TO HAVE ANY EXISTING UTILITIES LOCATED AND MARKED AT LEAST TWO FULL BUSINESS DAYS PRIOR TO ANY EXCAVATION, BUSTING OR DRILLING. NON-MEMBER UTILITIES MUST BE CONTACTED SEPARATELY. IT IS THE OWNER/OPERATOR'S RESPONSIBILITY TO OBTAIN ANY REQUIRED PERMITS FROM FEDERAL, STATE OR LOCAL AUTHORITIES. THE DESIGN/CONSTRUCTION OF THIS EROSION CONTROL PLAN WAS SUPERVISED BY WPA ACQUISITION CORP. (DATED APRIL 14, 2010) PREPARED FOR THE APPLICANT BY SPENCER S. HALL, NYS LIC. NO. 49138. TOTAL PARCEL AREA = 10.37 ACRES +/-.

OWNER/APPLICANT: WPA ACQUISITION CORP. MARLBORO NY 12542
 AREA TO BE GRADED = 4.0 ACRES +/-
 ZONING DISTRICT: B
 THE UNDERGROUND UTILITY LOCATIONS AND DEPTHS WERE OBTAINED FROM GARDNER RIDGE ASSOCIATES AND WPA ACQUISITION CORP., DATED JULY 20, 1986 AND FILED IN THE ORANGE COUNTY CLERK'S OFFICE JULY 24, 1986 AS MAP NO. 142-96.

OWNER/APPLICANT: WPA ACQUISITION CORP. MARLBORO NY 12542
 AREA TO BE GRADED = 4.0 ACRES +/-
 ZONING DISTRICT: B
 THE UNDERGROUND UTILITY LOCATIONS AND DEPTHS WERE OBTAINED FROM GARDNER RIDGE ASSOCIATES AND WPA ACQUISITION CORP., DATED JULY 20, 1986 AND FILED IN THE ORANGE COUNTY CLERK'S OFFICE JULY 24, 1986 AS MAP NO. 142-96.

OWNER/APPLICANT: WPA ACQUISITION CORP. MARLBORO NY 12542
 AREA TO BE GRADED = 4.0 ACRES +/-
 ZONING DISTRICT: B
 THE UNDERGROUND UTILITY LOCATIONS AND DEPTHS WERE OBTAINED FROM GARDNER RIDGE ASSOCIATES AND WPA ACQUISITION CORP., DATED JULY 20, 1986 AND FILED IN THE ORANGE COUNTY CLERK'S OFFICE JULY 24, 1986 AS MAP NO. 142-96.

OWNER/APPLICANT: WPA ACQUISITION CORP. MARLBORO NY 12542
 AREA TO BE GRADED = 4.0 ACRES +/-
 ZONING DISTRICT: B
 THE UNDERGROUND UTILITY LOCATIONS AND DEPTHS WERE OBTAINED FROM GARDNER RIDGE ASSOCIATES AND WPA ACQUISITION CORP., DATED JULY 20, 1986 AND FILED IN THE ORANGE COUNTY CLERK'S OFFICE JULY 24, 1986 AS MAP NO. 142-96.

OWNER/APPLICANT: WPA ACQUISITION CORP. MARLBORO NY 12542
 AREA TO BE GRADED = 4.0 ACRES +/-
 ZONING DISTRICT: B
 THE UNDERGROUND UTILITY LOCATIONS AND DEPTHS WERE OBTAINED FROM GARDNER RIDGE ASSOCIATES AND WPA ACQUISITION CORP., DATED JULY 20, 1986 AND FILED IN THE ORANGE COUNTY CLERK'S OFFICE JULY 24, 1986 AS MAP NO. 142-96.

OWNER/APPLICANT: WPA ACQUISITION CORP. MARLBORO NY 12542
 AREA TO BE GRADED = 4.0 ACRES +/-
 ZONING DISTRICT: B
 THE UNDERGROUND UTILITY LOCATIONS AND DEPTHS WERE OBTAINED FROM GARDNER RIDGE ASSOCIATES AND WPA ACQUISITION CORP., DATED JULY 20, 1986 AND FILED IN THE ORANGE COUNTY CLERK'S OFFICE JULY 24, 1986 AS MAP NO. 142-96.

OWNER/APPLICANT: WPA ACQUISITION CORP. MARLBORO NY 12542
 AREA TO BE GRADED = 4.0 ACRES +/-
 ZONING DISTRICT: B
 THE UNDERGROUND UTILITY LOCATIONS AND DEPTHS WERE OBTAINED FROM GARDNER RIDGE ASSOCIATES AND WPA ACQUISITION CORP., DATED JULY 20, 1986 AND FILED IN THE ORANGE COUNTY CLERK'S OFFICE JULY 24, 1986 AS MAP NO. 142-96.

OWNER/APPLICANT: WPA ACQUISITION CORP. MARLBORO NY 12542
 AREA TO BE GRADED = 4.0 ACRES +/-
 ZONING DISTRICT: B
 THE UNDERGROUND UTILITY LOCATIONS AND DEPTHS WERE OBTAINED FROM GARDNER RIDGE ASSOCIATES AND WPA ACQUISITION CORP., DATED JULY 20, 1986 AND FILED IN THE ORANGE COUNTY CLERK'S OFFICE JULY 24, 1986 AS MAP NO. 142-96.

OWNER/APPLICANT: WPA ACQUISITION CORP. MARLBORO NY 12542
 AREA TO BE GRADED = 4.0 ACRES +/-
 ZONING DISTRICT: B
 THE UNDERGROUND UTILITY LOCATIONS AND DEPTHS WERE OBTAINED FROM GARDNER RIDGE ASSOCIATES AND WPA ACQUISITION CORP., DATED JULY 20, 1986 AND FILED IN THE ORANGE COUNTY CLERK'S OFFICE JULY 24, 1986 AS MAP NO. 142-96.

OWNER/APPLICANT: WPA ACQUISITION CORP. MARLBORO NY 12542
 AREA TO BE GRADED = 4.0 ACRES +/-
 ZONING DISTRICT: B
 THE UNDERGROUND UTILITY LOCATIONS AND DEPTHS WERE OBTAINED FROM GARDNER RIDGE ASSOCIATES AND WPA ACQUISITION CORP., DATED JULY 20, 1986 AND FILED IN THE ORANGE COUNTY CLERK'S OFFICE JULY 24, 1986 AS MAP NO. 142-96.

OWNER/APPLICANT: WPA ACQUISITION CORP. MARLBORO NY 12542
 AREA TO BE GRADED = 4.0 ACRES +/-
 ZONING DISTRICT: B
 THE UNDERGROUND UTILITY LOCATIONS AND DEPTHS WERE OBTAINED FROM GARDNER RIDGE ASSOCIATES AND WPA ACQUISITION CORP., DATED JULY 20, 1986 AND FILED IN THE ORANGE COUNTY CLERK'S OFFICE JULY 24, 1986 AS MAP NO. 142-96.

OWNER/APPLICANT: WPA ACQUISITION CORP. MARLBORO NY 12542
 AREA TO BE GRADED = 4.0 ACRES +/-
 ZONING DISTRICT: B
 THE UNDERGROUND UTILITY LOCATIONS AND DEPTHS WERE OBTAINED FROM GARDNER RIDGE ASSOCIATES AND WPA ACQUISITION CORP., DATED JULY 20, 1986 AND FILED IN THE ORANGE COUNTY CLERK'S OFFICE JULY 24, 1986 AS MAP NO. 142-96.

OWNER/APPLICANT: WPA ACQUISITION CORP. MARLBORO NY 12542
 AREA TO BE GRADED = 4.0 ACRES +/-
 ZONING DISTRICT: B
 THE UNDERGROUND UTILITY LOCATIONS AND DEPTHS WERE OBTAINED FROM GARDNER RIDGE ASSOCIATES AND WPA ACQUISITION CORP., DATED JULY 20, 1986 AND FILED IN THE ORANGE COUNTY CLERK'S OFFICE JULY 24, 1986 AS MAP NO. 142-96.

OWNER/APPLICANT: WPA ACQUISITION CORP. MARLBORO NY 12542
 AREA TO BE GRADED = 4.0 ACRES +/-
 ZONING DISTRICT: B
 THE UNDERGROUND UTILITY LOCATIONS AND DEPTHS WERE OBTAINED FROM GARDNER RIDGE ASSOCIATES AND WPA ACQUISITION CORP., DATED JULY 20, 1986 AND FILED IN THE ORANGE COUNTY CLERK'S OFFICE JULY 24, 1986 AS MAP NO. 142-96.

OWNER/APPLICANT: WPA ACQUISITION CORP. MARLBORO NY 12542
 AREA TO BE GRADED = 4.0 ACRES +/-
 ZONING DISTRICT: B
 THE UNDERGROUND UTILITY LOCATIONS AND DEPTHS WERE OBTAINED FROM GARDNER RIDGE ASSOCIATES AND WPA ACQUISITION CORP., DATED JULY 20, 1986 AND FILED IN THE ORANGE COUNTY CLERK'S OFFICE JULY 24, 1986 AS MAP NO. 142-96.

OWNER/APPLICANT: WPA ACQUISITION CORP. MARLBORO NY 12542
 AREA TO BE GRADED = 4.0 ACRES +/-
 ZONING DISTRICT: B
 THE UNDERGROUND UTILITY LOCATIONS AND DEPTHS WERE OBTAINED FROM GARDNER RIDGE ASSOCIATES AND WPA ACQUISITION CORP., DATED JULY 20, 1986 AND FILED IN THE ORANGE COUNTY CLERK'S OFFICE JULY 24, 1986 AS MAP NO. 142-96.

OWNER/APPLICANT: WPA ACQUISITION CORP. MARLBORO NY 12542
 AREA TO BE GRADED = 4.0 ACRES +/-
 ZONING DISTRICT: B
 THE UNDERGROUND UTILITY LOCATIONS AND DEPTHS WERE OBTAINED FROM GARDNER RIDGE ASSOCIATES AND WPA ACQUISITION CORP., DATED JULY 20, 1986 AND FILED IN THE ORANGE COUNTY CLERK'S OFFICE JULY 24, 1986 AS MAP NO. 142-96.

OWNER/APPLICANT: WPA ACQUISITION CORP. MARLBORO NY 12542
 AREA TO BE GRADED = 4.0 ACRES +/-
 ZONING DISTRICT: B
 THE UNDERGROUND UTILITY LOCATIONS AND DEPTHS WERE OBTAINED FROM GARDNER RIDGE ASSOCIATES AND WPA ACQUISITION CORP., DATED JULY 20, 1986 AND FILED IN THE ORANGE COUNTY CLERK'S OFFICE JULY 24, 1986 AS MAP NO. 142-96.

OWNER/APPLICANT: WPA ACQUISITION CORP. MARLBORO NY 12542
 AREA TO BE GRADED = 4.0 ACRES +/-
 ZONING DISTRICT: B
 THE UNDERGROUND UTILITY LOCATIONS AND DEPTHS WERE OBTAINED FROM GARDNER RIDGE ASSOCIATES AND WPA ACQUISITION CORP., DATED JULY 20, 1986 AND FILED IN THE ORANGE COUNTY CLERK'S OFFICE JULY 24, 1986 AS MAP NO. 142-96.

OWNER/APPLICANT: WPA ACQUISITION CORP. MARLBORO NY 12542
 AREA TO BE GRADED = 4.0 ACRES +/-
 ZONING DISTRICT: B
 THE UNDERGROUND UTILITY LOCATIONS AND DEPTHS WERE OBTAINED FROM GARDNER RIDGE ASSOCIATES AND WPA ACQUISITION CORP., DATED JULY 20, 1986 AND FILED IN THE ORANGE COUNTY CLERK'S OFFICE JULY 24, 1986 AS MAP NO. 142-96.

OWNER/APPLICANT: WPA ACQUISITION CORP. MARLBORO NY 12542
 AREA TO BE GRADED = 4.0 ACRES +/-
 ZONING DISTRICT: B
 THE UNDERGROUND UTILITY LOCATIONS AND DEPTHS WERE OBTAINED FROM GARDNER RIDGE ASSOCIATES AND WPA ACQUISITION CORP., DATED JULY 20, 1986 AND FILED IN THE ORANGE COUNTY CLERK'S OFFICE JULY 24, 1986 AS MAP NO. 142-96.

OWNER/APPLICANT: WPA ACQUISITION CORP. MARLBORO NY 12542
 AREA TO BE GRADED = 4.0 ACRES +/-
 ZONING DISTRICT: B
 THE UNDERGROUND UTILITY LOCATIONS AND DEPTHS WERE OBTAINED FROM GARDNER RIDGE ASSOCIATES AND WPA ACQUISITION CORP., DATED JULY 20, 1986 AND FILED IN THE ORANGE COUNTY CLERK'S OFFICE JULY 24, 1986 AS MAP NO. 142-96.

OWNER/APPLICANT: WPA ACQUISITION CORP. MARLBORO NY 12542
 AREA TO BE GRADED = 4.0 ACRES +/-
 ZONING DISTRICT: B
 THE UNDERGROUND UTILITY LOCATIONS AND DEPTHS WERE OBTAINED FROM GARDNER RIDGE ASSOCIATES AND WPA ACQUISITION CORP., DATED JULY 20, 1986 AND FILED IN THE ORANGE COUNTY CLERK'S OFFICE JULY 24, 1986 AS MAP NO. 142-96.

OWNER/APPLICANT: WPA ACQUISITION CORP. MARLBORO NY 12542
 AREA TO BE GRADED = 4.0 ACRES +/-
 ZONING DISTRICT: B
 THE UNDERGROUND UTILITY LOCATIONS AND DEPTHS WERE OBTAINED FROM GARDNER RIDGE ASSOCIATES AND WPA ACQUISITION CORP., DATED JULY 20, 1986 AND FILED IN THE ORANGE COUNTY CLERK'S OFFICE JULY 24, 1986 AS MAP NO. 142-96.

OWNER/APPLICANT: WPA ACQUISITION CORP. MARLBORO NY 12542
 AREA TO BE GRADED = 4.0 ACRES +/-
 ZONING DISTRICT: B
 THE UNDERGROUND UTILITY LOCATIONS AND DEPTHS WERE OBTAINED FROM GARDNER RIDGE ASSOCIATES AND WPA ACQUISITION CORP., DATED JULY 20, 1986 AND FILED IN THE ORANGE COUNTY CLERK'S OFFICE JULY 24, 1986 AS MAP NO. 142-96.

OWNER/APPLICANT: WPA ACQUISITION CORP. MARLBORO NY 12542
 AREA TO BE GRADED = 4.0 ACRES +/-
 ZONING DISTRICT: B
 THE UNDERGROUND UTILITY LOCATIONS AND DEPTHS WERE OBTAINED FROM GARDNER RIDGE ASSOCIATES AND WPA ACQUISITION CORP., DATED JULY 20, 1986 AND FILED IN THE ORANGE COUNTY CLERK'S OFFICE JULY 24, 1986 AS MAP NO. 142-96.

OWNER/APPLICANT: WPA ACQUISITION CORP. MARLBORO NY 12542
 AREA TO BE GRADED = 4.0 ACRES +/-
 ZONING DISTRICT: B
 THE UNDERGROUND UTILITY LOCATIONS AND DEPTHS WERE OBTAINED FROM GARDNER RIDGE ASSOCIATES AND WPA ACQUISITION CORP., DATED JULY 20, 1986 AND FILED IN THE ORANGE COUNTY CLERK'S OFFICE JULY 24, 1986 AS MAP NO. 142-96.

OWNER/APPLICANT: WPA ACQUISITION CORP. MARLBORO NY 12542
 AREA TO BE GRADED = 4.0 ACRES +/-
 ZONING DISTRICT: B
 THE UNDERGROUND UTILITY LOCATIONS AND DEPTHS WERE OBTAINED FROM GARDNER RIDGE ASSOCIATES AND WPA ACQUISITION CORP., DATED JULY 20, 1986 AND FILED IN THE ORANGE COUNTY CLERK'S OFFICE JULY 24, 1986 AS MAP NO. 142-96.

OWNER/APPLICANT: WPA ACQUISITION CORP. MARLBORO NY 12542
 AREA TO BE GRADED = 4.0 ACRES +/-
 ZONING DISTRICT: B
 THE UNDERGROUND UTILITY LOCATIONS AND DEPTHS WERE OBTAINED FROM GARDNER RIDGE ASSOCIATES AND WPA ACQUISITION CORP., DATED JULY 20, 1986 AND FILED IN THE ORANGE COUNTY CLERK'S OFFICE JULY 24, 1986 AS MAP NO. 142-96.

OWNER/APPLICANT: WPA ACQUISITION CORP. MARLBORO NY 12542
 AREA TO BE GRADED = 4.0 ACRES +/-
 ZONING DISTRICT: B
 THE UNDERGROUND UTILITY LOCATIONS AND DEPTHS WERE OBTAINED FROM GARDNER RIDGE ASSOCIATES AND WPA ACQUISITION CORP., DATED JULY 20, 1986 AND FILED IN THE ORANGE COUNTY CLERK'S OFFICE JULY 24, 1986 AS MAP NO. 142-96.

OWNER/APPLICANT: WPA ACQUISITION CORP. MARLBORO NY 12542
 AREA TO BE GRADED = 4.0 ACRES +/-
 ZONING DISTRICT: B
 THE UNDERGROUND UTILITY LOCATIONS AND DEPTHS WERE OBTAINED FROM GARDNER RIDGE ASSOCIATES AND WPA ACQUISITION CORP., DATED JULY 20, 1986 AND FILED IN THE ORANGE COUNTY CLERK'S OFFICE JULY 24, 1986 AS MAP NO. 142-96.

OWNER/APPLICANT: WPA ACQUISITION CORP. MARLBORO NY 12542
 AREA TO BE GRADED = 4.0 ACRES +/-
 ZONING DISTRICT: B
 THE UNDERGROUND UTILITY LOCATIONS AND DEPTHS WERE OBTAINED FROM GARDNER RIDGE ASSOCIATES AND WPA ACQUISITION CORP., DATED JULY 20, 1986 AND FILED IN THE ORANGE COUNTY CLERK'S OFFICE JULY 24, 1986 AS MAP NO. 142-96.

OWNER/APPLICANT: WPA ACQUISITION CORP. MARLBORO NY 12542
 AREA TO BE GRADED = 4.0 ACRES +/-
 ZONING DISTRICT: B
 THE UNDERGROUND UTILITY LOCATIONS AND DEPTHS WERE OBTAINED FROM GARDNER RIDGE ASSOCIATES AND WPA ACQUISITION CORP., DATED JULY 20, 1986 AND FILED IN THE ORANGE COUNTY CLERK'S OFFICE JULY 24, 1986 AS MAP NO. 142-96.

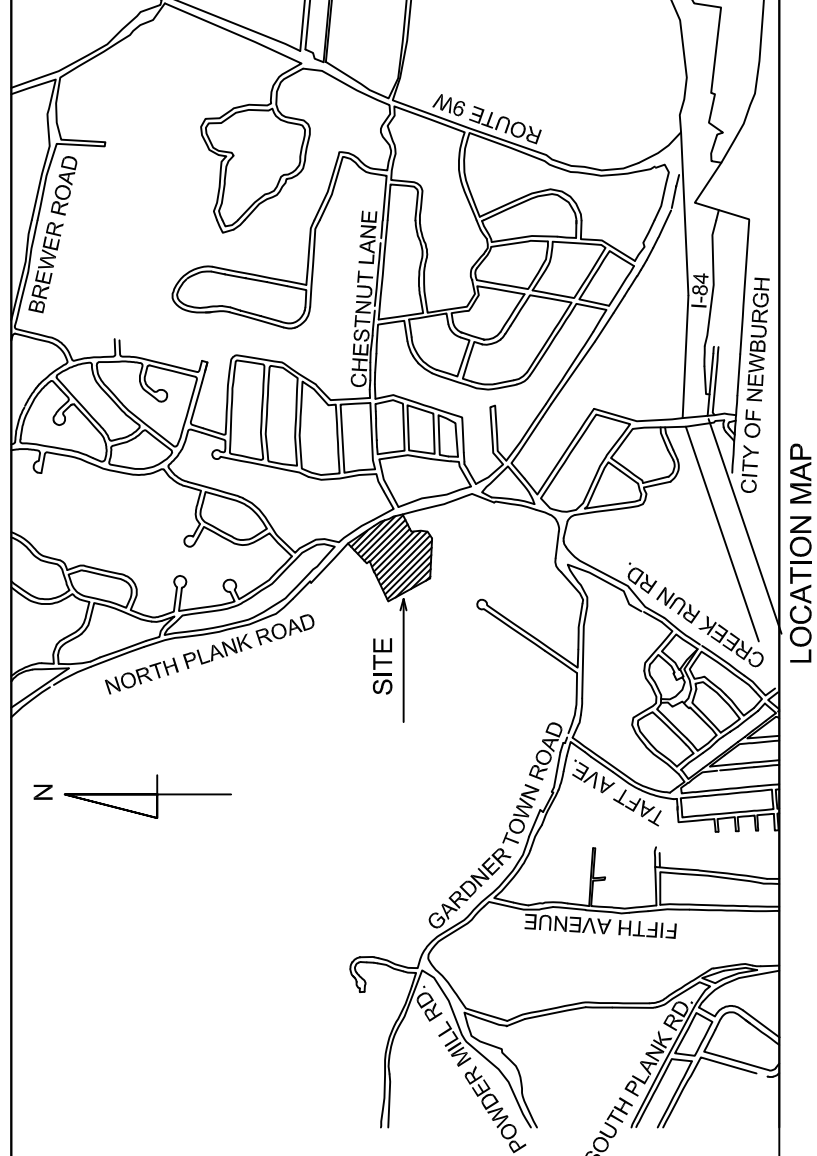
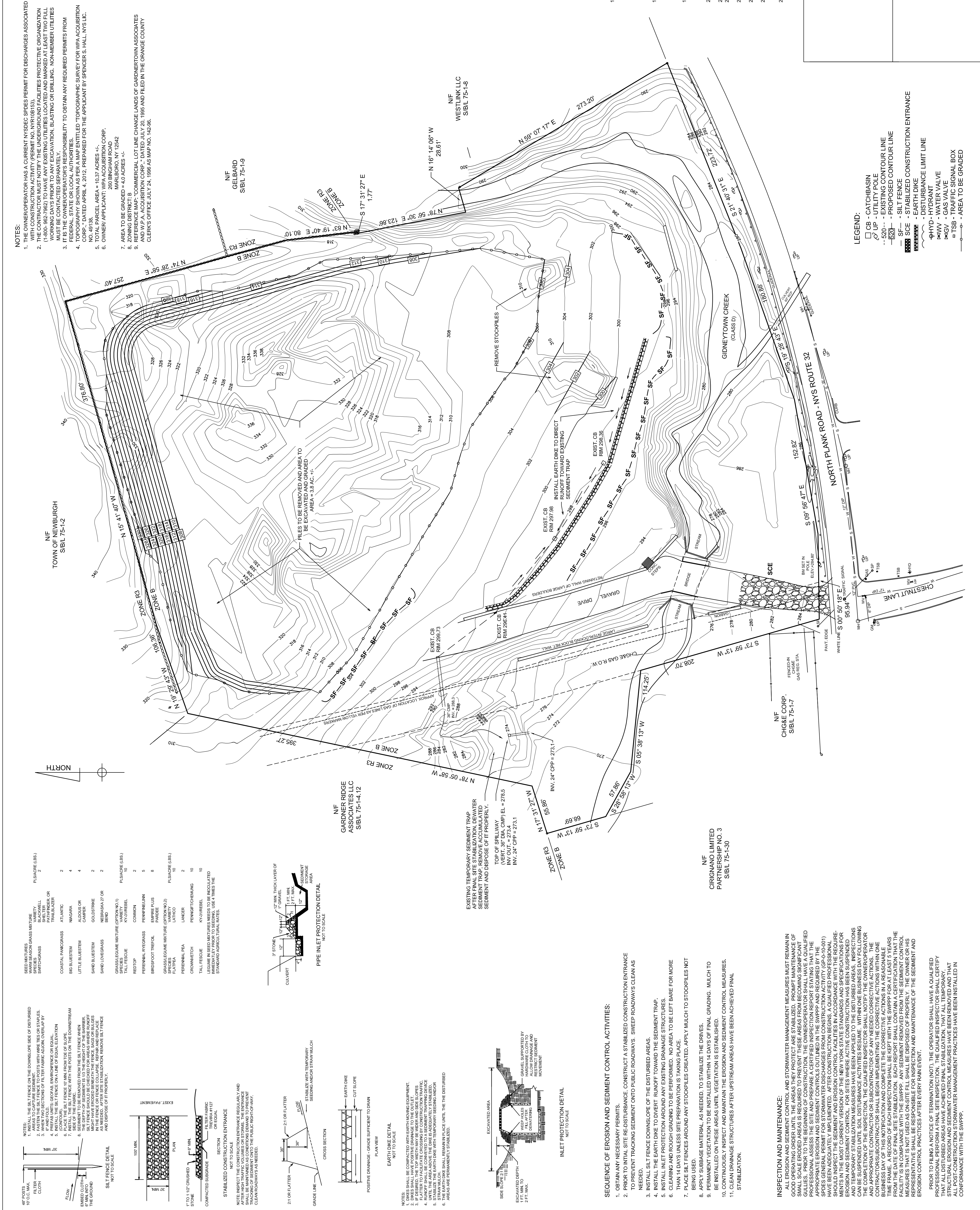
OWNER/APPLICANT: WPA ACQUISITION CORP. MARLBORO NY 12542
 AREA TO BE GRADED = 4.0 ACRES +/-
 ZONING DISTRICT: B
 THE UNDERGROUND UTILITY LOCATIONS AND DEPTHS WERE OBTAINED FROM GARDNER RIDGE ASSOCIATES AND WPA ACQUISITION CORP., DATED JULY 20, 1986 AND FILED IN THE ORANGE COUNTY CLERK'S OFFICE JULY 24, 1986 AS MAP NO. 142-96.

OWNER/APPLICANT: WPA ACQUISITION CORP. MARLBORO NY 12542
 AREA TO BE GRADED = 4.0 ACRES +/-
 ZONING DISTRICT: B
 THE UNDERGROUND UTILITY LOCATIONS AND DEPTHS WERE OBTAINED FROM GARDNER RIDGE ASSOCIATES AND WPA ACQUISITION CORP., DATED JULY 20, 1986 AND FILED IN THE ORANGE COUNTY CLERK'S OFFICE JULY 24, 1986 AS MAP NO. 142-96.

OWNER/APPLICANT: WPA ACQUISITION CORP. MARLBORO NY 12542
 AREA TO BE GRADED = 4.0 ACRES +/-
 ZONING DISTRICT: B
 THE UNDERGROUND UTILITY LOCATIONS AND DEPTHS WERE OBTAINED FROM GARDNER RIDGE ASSOCIATES AND WPA ACQUISITION CORP., DATED JULY 20, 1986 AND FILED IN THE ORANGE COUNTY CLERK'S OFFICE JULY 24, 1986 AS MAP NO. 142-96.

OWNER/APPLICANT: WPA ACQUISITION CORP. MARLBORO NY 12542
 AREA TO BE GRADED = 4.0 ACRES +/-
 ZONING DISTRICT: B
 THE UNDERGROUND UTILITY LOCATIONS AND DEPTHS WERE OBTAINED FROM GARDNER RIDGE ASSOCIATES AND WPA ACQUISITION CORP., DATED JULY 20, 1986 AND FILED IN THE ORANGE COUNTY CLERK'S OFFICE JULY 24, 1986 AS MAP NO. 142-96.

OWNER/APPLICANT: WPA ACQUISITION CORP. MARLBORO NY 12542
 AREA TO BE GRADED = 4.0 ACRES +/-
 ZONING DISTRICT: B
 THE UNDERGROUND UTILITY LOCATIONS AND DEPTHS WERE OBTAINED FROM GARDNER RIDGE ASSOCIATES AND WPA ACQUISITION CORP., DATED JULY 20, 1986 AND FILED IN THE ORANGE COUNTY CLERK'S OFFICE JULY 24, 1986 AS MAP NO. 142-96.



SOIL EROSION AND SEDIMENT CONTROL NOTES:

1. ALL WORK TO BE DONE IN ACCORDANCE WITH STANDARDS SET FORTH IN NEW YORK STATE STANDARDS AND SPECIFICATIONS FOR EROSION AND SEDIMENT CONTROL, LATEST EDITION, PREPARED BY THE USDA SOIL CONSERVATION SERVICE.
2. SOIL EXPOSURE SHALL BE LIMITED TO A MAXIMUM OF FIVE ACRES AT ANY ONE TIME. PRIOR TO PROGRESSING FROM ONE AREA TO ANOTHER, THE PREVIOUSLY EXPOSED AREA SHALL BE STABILIZED BEFORE THE FOLLOWING AREA'S SOIL EXPOSURE.
3. ALL SOIL EROSION AND SEDIMENT CONTROL PRACTICES ARE TO BE INSTALLED PRIOR TO ANY MAJOR SOIL DISTURBANCE, OR IN THEIR PROPER SEQUENCE, AND MAINTAINED UNTIL PERMANENT PROTECTION IS ESTABLISHED.
4. NO DISTURBED AREA SHALL BE LEFT BARE FOR MORE THAN 14 DAYS UNLESS SITE PREPARATION IS TAKING PLACE.
5. DISTURBED AREAS LEFT BARE FOR MORE THAN 14 DAYS AND NOT SUBJECT TO SITE PREPARATION ACTIVITIES SHALL RECEIVE A TEMPORARY SEEDING. IF THE SEASON PREVENTS THE ESTABLISHMENT OF TEMPORARY VEGETATION, THE DISTURBED AREA SHOULD BE MULCHED WITH STRAW, AT A RATE OF TWO (2) TONS PER ACRE (100-120 BALES/ACRE).
6. PERMANENT VEGETATION SHALL BE INSTALLED ON ALL EXPOSED AREAS WITHIN 14 DAYS AFTER FINAL GRADING. MULCH SHALL BE USED AS NECESSARY FOR PROTECTION UNTIL PERMANENT VEGETATION IS ESTABLISHED.
7. PRIOR TO SITE RESTORATION, A STABILIZED CONSTRUCTION ENTRANCE MUST BE INSTALLED AT THE CONVEYANCE POINTS TO PREVENT TRACKING OF SEDIMENT ONTO PUBLIC ROADS. PUBLIC ROADS ARE TO BE SWEEPED CLEAN IMMEDIATELY AFTER TRACKING OF SEDIMENT ONTO PUBLIC ROADS.
8. DUST SHALL BE CONTROLLED ON A CONSTANT BASIS BY WETTING THE SURFACE.
9. ANY CRITICAL AREAS (I.E. STEEP SLOPES) SHALL BE STABILIZED IMMEDIATELY UPON THEIR CREATION. PERMANENT VEGETATION SHALL BE INSTALLED IMMEDIATELY UPON THEIR CREATION.
10. ANY CRITICAL AREAS (I.E. STEEP SLOPES) SHALL BE STABILIZED IMMEDIATELY UPON THEIR CREATION.
11. ANY CRITICAL AREAS (I.E. STEEP SLOPES) SHALL BE STABILIZED IMMEDIATELY UPON THEIR CREATION.
12. CATCHBASINS AND CULVERTS SHALL BE PROTECTED WITH HAY BALE OR GRAVEL FILTERS TO PREVENT SEDIMENT FROM ENTERING THE STREAM CORRIDOR.
13. SUBBASE COURSE TO BE APPLIED FOLLOWING ROUGH GRADING TO STABILIZED DRIVES AND ROADWAYS.
14. HEAVY EQUIPMENT SHALL NOT ENTER THE STREAM CORRIDOR.
15. MATERIAL WHICH WILL NOT BE USED AS FILL MATERIAL SHALL BE HAULED OFF THE SITE AND DISPOSED OF PROPERLY.
16. SEEDING SPECIFICATIONS:
 - A. LINE AND FERTILIZE AS NEEDED.
 - B. SEEDING TO CONSIST OF RYEGRASS (ANNUAL OR PERENNIAL) APPLIED UNIFORMLY AT A RATE OF 30 LBS./AC. (0.7 LBS./1000 SQ. FT.) OR IF SEEDING IN OCTOBER/NOVEMBER, CERTIFIED ARCTICSTOCK 30 LBS./AC. (0.7 LBS./1000 SQ. FT.)
 - C. PERMANENT SEEDING SHALL BE IN ACCORDANCE WITH THE STANDARDS AND SPECIFICATIONS FOR VEGETATING SAND AND GRAVEL AREAS AS PER NEW YORK STATE STANDARDS AND SPECIFICATIONS FOR EROSION AND SEDIMENT CONTROL, LATEST REVISION.
 - D. SEED MIXTURES SHALL BE BASED ON THE PERCENT OF FINES IN THE SOIL AND THE TIME OF PLANTING.
 - A. IF LESS THAN 15% FINES USE A WARM SEASON GRASS MIX. IF FALL PLANTING IS NECESSARY, TERN MIXTURES SHALL BE USED.
 - B. IF GREATER THAN 15% FINES USE A WARM SEASON GRASS MIX. OLD HAY SHALL NOT BE USED.
 - C. OPTIMUM TIMES FOR SEEDING ARE AS FOLLOWS:
 1. WARM SEASON GRASSES - VERY EARLY SPRING (MARCH/APRIL) IS BEST. SEEDING MUST BE DONE BEFORE THE END OF APRIL.
 2. GRASS LEGUME MIX. MAY BE SEEDER FROM EARLY SPRINGS THROUGH JUNE 15TH, OR AFTER AUGUST 15TH UNTIL THE GROUND FREEZES.
 - D. THE SEED MIX MUST BE UNIFORMLY BROADCAST UTILIZING A HYDROSEEDER. THE SEED CAN BE SPREAD BY TRACKING THE AREA WITH A DOZER HAVING CLEATS A MINIMUM OF 1 INCH IN DEPTH. THE OPERATION OF THE DOZER SHALL BE PERPENDICULAR TO THE CONTOURS.
 - E. MULCH SHALL BE APPLIED TO ALL EXPOSED AREAS AS FOLLOWS:
 - A. (DO NOT USE GRASS HAY).
 - B. FOR A WARM SEASON GRASS MIX, MULCH SHALL BE APPLIED AT A RATE OF 4000 LBS./AC. (100-120 BALES/AC).
 - C. ANCHOR THE MULCH BY "TRACKING" WITH A BULLDOZER.
 - F. ALL EROSION AND SEDIMENT CONTROL MEASURES ARE TO BE PERIODICALLY INSPECTED, MAINTAINED AND REPAIRED AS NEEDED. INSPECTIONS SHALL BE CONDUCTED AT LEAST ONCE A WEEK DURING PERIODS OF RAIN OR WITHIN 24 HOURS OF A STORM PRODUCING 0.5 INCHES OF RAIN OR GREATER, AND OR IN ACCORDANCE WITH THE REQUIREMENTS IN NEW YORK STATE STANDARDS AND SPECIFICATIONS FOR EROSION AND SEDIMENT CONTROL.
 - G. SEDIMENT TO BE REMOVED FROM THE SILT FENCE WHEN THE DEPTH OF SEDIMENT IS 10 THE HEIGHT OF THE FENCE. SIGNS IN THE FENCE OR FENCE COLLAPSE. REPAIR AND REPLACE AS NEEDED. AFTER SITE STABILIZATION, REMOVE MULCH FROM AREAS WHERE THE MULCH HAS BEEN LOOSENED OR REMOVED, AND REPLACE MULCH AS NEEDED. REMOVE ANY ANCHORING WHEN IT IS NO LONGER NEEDED AND DISPOSE OF IT PROPERLY.
 - H. INSPECT PROTECTION BEARS, REMOVE SEDIMENT FROM PROTECTION BEARS, AFTER SITE STABILIZATION, REMOVE THE MATERIALS AND SEDIMENT AND DISPOSE OF THEM PROPERLY.
 - I. INSPECT THE CONSTRUCTION ENTRANCE REGULARLY AND AFTER HIGH TRAFFIC VOLUMES OR STORMS. APPLY MULCH TO THE CONSTRUCTION ENTRANCE AS NEEDED TO RESTORE TO ITS ORIGINAL DIMENSIONS WHEN SEDIMENT HAS ACCUMULATED TO 1/2 OF THE TRAP'S DESIGN DEPTH.
 - J. ALL WASTE MATERIAL (I.E. CONSTRUCTION DEBRIS AND TRASH) SHALL BE WAIVED TO AN APPROVED LANDFILL. WASTE MATERIAL SHALL BE COLLECTED TO PREVENT TRACKING OF SEDIMENT ONTO PUBLIC ROADS.
 - K. ONCE THE AREA HAS BECOME PERMANENTLY STABILIZED DURING STORM EVENTS, ALL TEMPORARY EROSION AND SEDIMENT CONTROL MEASURES SHALL BE REMOVED AND DISPOSED OF PROPERLY.

LOCATION MAP
SCALE: 1 IN. = 2000 FT.

SOIL EROSION AND SEDIMENT CONTROL NOTES:

1. ALL WORK TO BE DONE IN ACCORDANCE WITH STANDARDS SET FORTH IN NEW YORK STATE STANDARDS AND SPECIFICATIONS FOR EROSION AND SEDIMENT CONTROL, LATEST EDITION, PREPARED BY THE USDA SOIL CONSERVATION SERVICE.

2. SOIL EXPOSURE SHALL BE LIMITED TO A MAXIMUM OF FIVE ACRES AT ANY ONE TIME. PRIOR TO PROGRESSING FROM ONE AREA TO ANOTHER, THE PREVIOUSLY EXPOSED AREA SHALL BE STABILIZED BEFORE THE FOLLOWING AREA'S SOIL EXPOSURE.

3. ALL SOIL EROSION AND SEDIMENT CONTROL PRACTICES ARE TO BE INSTALLED PRIOR TO ANY MAJOR SOIL DISTURBANCE, OR IN THEIR PROPER SEQUENCE, AND MAINTAINED UNTIL PERMANENT PROTECTION IS ESTABLISHED.

4. NO DISTURBED AREA SHALL BE LEFT BARE FOR MORE THAN 14 DAYS UNLESS SITE PREPARATION IS TAKING PLACE.

5. DISTURBED AREAS LEFT BARE FOR MORE THAN 14 DAYS AND NOT SUBJECT TO SITE PREPARATION ACTIVITIES SHALL RECEIVE A TEMPORARY SEEDING. IF THE SEASON PREVENTS THE ESTABLISHMENT OF TEMPORARY VEGETATION, THE DISTURBED AREA SHOULD BE MULCHED WITH STRAW, AT A RATE OF TWO (2) TONS PER ACRE (100-120 BALES/ACRE).

6. PERMANENT VEGETATION SHALL BE INSTALLED ON ALL EXPOSED AREAS WITHIN 14 DAYS AFTER FINAL GRADING. MULCH SHALL BE USED AS NECESSARY FOR PROTECTION UNTIL PERMANENT VEGETATION IS ESTABLISHED.

7. PRIOR TO SITE RESTORATION, A STABILIZED CONSTRUCTION ENTRANCE MUST BE INSTALLED AT THE CONVEYANCE POINTS TO PREVENT TRACKING OF SEDIMENT ONTO PUBLIC ROADS. PUBLIC ROADS ARE TO BE SWEEPED CLEAN IMMEDIATELY AFTER TRACKING OF SEDIMENT ONTO PUBLIC ROADS.

8. DUST SHALL BE CONTROLLED ON A CONSTANT BASIS BY WETTING THE SURFACE.

9. ANY CRITICAL AREAS (I.E. STEEP SLOPES) SHALL BE STABILIZED IMMEDIATELY UPON THEIR CREATION. PERMANENT VEGETATION SHALL BE INSTALLED IMMEDIATELY UPON THEIR CREATION.

10. ANY CRITICAL AREAS (I.E. STEEP SLOPES) SHALL BE STABILIZED IMMEDIATELY UPON THEIR CREATION.

11. ANY CRITICAL AREAS (I.E. STEEP SLOPES) SHALL BE STABILIZED IMMEDIATELY UPON THEIR CREATION.

12. CATCHBASINS AND CULVERTS SHALL BE PROTECTED WITH HAY BALE OR GRAVEL FILTERS TO PREVENT SEDIMENT FROM ENTERING THE STREAM CORRIDOR.

13. SUBBASE COURSE TO BE APPLIED FOLLOWING ROUGH GRADING TO STABILIZED DRIVES AND ROADWAYS.

14. HEAVY EQUIPMENT SHALL NOT ENTER THE STREAM CORRIDOR.

15. MATERIAL WHICH WILL NOT BE USED AS FILL MATERIAL SHALL BE HAULED OFF THE SITE AND DISPOSED OF PROPERLY.

16. SEEDING SPECIFICATIONS:

A. LINE AND FERTILIZE AS NEEDED.

B. SEEDING TO CONSIST OF RYEGRASS (ANNUAL OR PERENNIAL) APPLIED UNIFORMLY AT A RATE OF 30 LBS./AC. (0.7 LBS./1000 SQ. FT.) OR IF SEEDING IN OCTOBER/NOVEMBER, CERTIFIED ARCTICSTOCK 30 LBS./AC. (0.7 LBS./1000 SQ. FT.)

C. PERMANENT SEEDING SHALL BE IN ACCORDANCE WITH THE STANDARDS AND SPECIFICATIONS FOR VEGETATING SAND AND GRAVEL AREAS AS PER NEW YORK STATE STANDARDS AND SPECIFICATIONS FOR EROSION AND SEDIMENT CONTROL, LATEST REVISION.

D. SEED MIXTURES SHALL BE BASED ON THE PERCENT OF FINES IN THE SOIL AND THE TIME OF PLANTING.

E. IF LESS THAN 15% FINES USE A WARM SEASON GRASS MIX. IF FALL PLANTING IS NECESSARY, TERN MIXTURES SHALL BE USED.

F. IF GREATER THAN 15% FINES USE A WARM SEASON GRASS MIX. OLD HAY SHALL NOT BE USED.

G. OPTIMUM TIMES FOR SEEDING ARE AS FOLLOWS:

1. WARM SEASON GRASSES - VERY EARLY SPRING (MARCH/APRIL) IS BEST. SEEDING MUST BE DONE BEFORE THE END OF APRIL.

2. GRASS LEGUME MIX. MAY BE SEEDER FROM EARLY SPRINGS THROUGH JUNE 15TH, OR AFTER AUGUST 15TH UNTIL THE GROUND FREEZES.

H. THE SEED MIX MUST BE UNIFORMLY BROADCAST UTILIZING A HYDROSEEDER. THE SEED CAN BE SPREAD BY TRACKING THE AREA WITH A DOZER HAVING CLEATS A MINIMUM OF 1 INCH IN DEPTH. THE OPERATION OF THE DOZER SHALL BE PERPENDICULAR TO THE CONTOURS.

I. MULCH SHALL BE APPLIED TO ALL EXPOSED AREAS AS FOLLOWS: