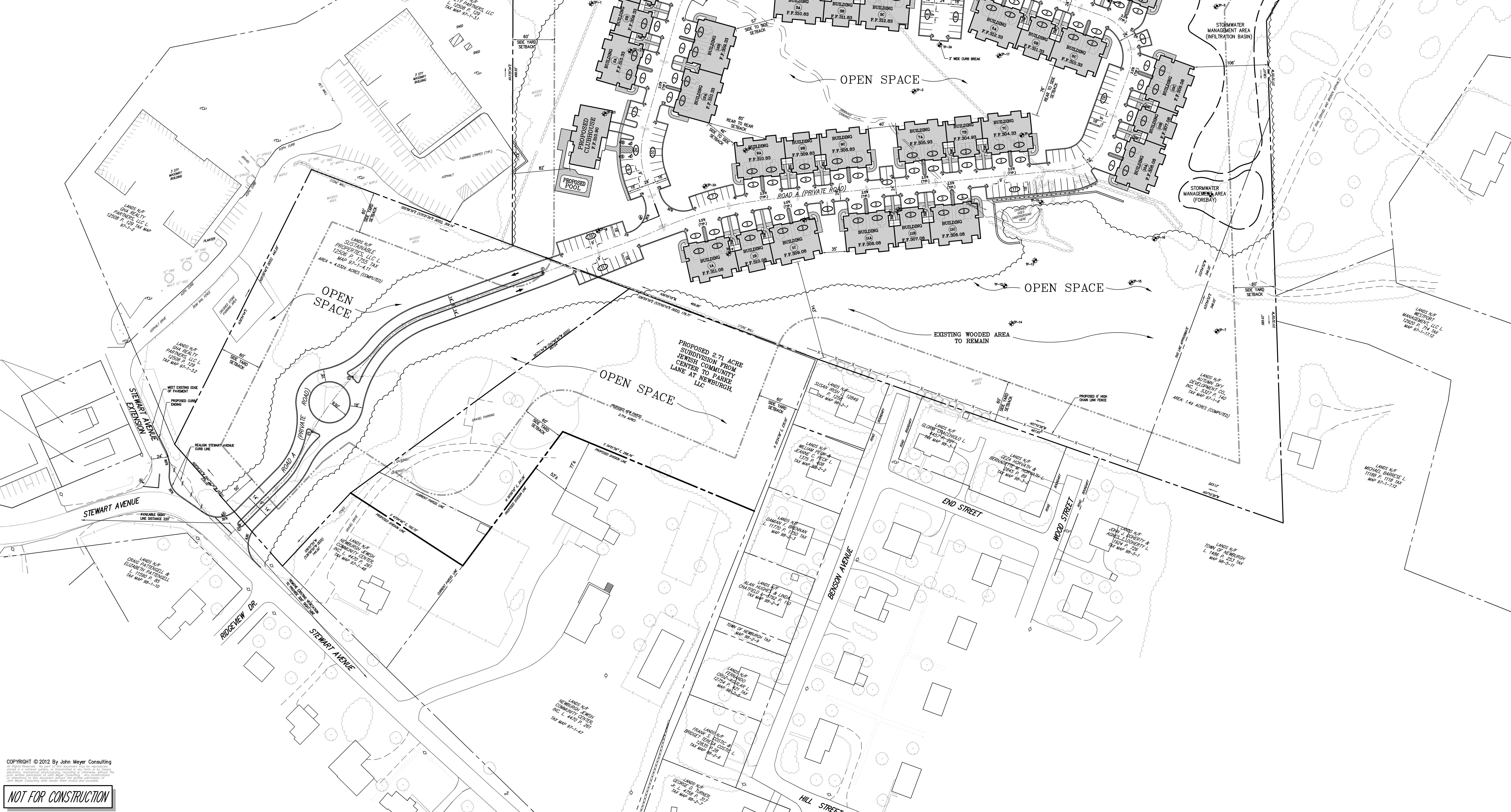


ACCOMMODATION NUMBER	SYMBOL	SIZE	DESCRIPTION	MOUNTING TYPE	MOUNTING HEIGHT	REGULATORY REFERENCE
A	STOP	30"x30"	WHITE ON RED	STEEL CHANNEL	7'-0"	R1-1 X
B	YIELD	12"x18"	GREEN & BLUE ON WHITE	STEEL CHANNEL	7'-0"	R7-8 X
C	TURN	24"x30"	BLACK ON WHITE	STEEL CHANNEL	7'-0"	R4-7 X

- LEGEND**
- EXISTING PROPERTY LINE
 - ADJACENT PROPERTY LINE
 - EXISTING SETBACK LINE
 - EXISTING WATERCOURSE
 - EXISTING BUILDING LINE
 - EXISTING PAVEMENT EDGE
 - EXISTING CURB LINE
 - EXISTING STONE WALL
 - EXISTING RETAINING WALL
 - EXISTING GUIDE RAIL
 - EXISTING FENCE
 - EXISTING TREE AND DESIGNATION
 - EXISTING TREE LINE
 - EXISTING DIRECTIONAL ARROWS
 - EXISTING PAINT
 - EXISTING PARKING WITH NUMBER OF SPACES
 - EXISTING PEDESTRIAN CROSSING
 - EXISTING UTILITY POLE
 - EXISTING LIGHT POLE
 - EXISTING SIGN

- NOTES**
- EXISTING CONDITIONS SHOWN ON THIS PLAN HAVE BEEN TAKEN FROM SURVEY DATED, "UPDATED OF AN ALTA FACIN LAND TITLE SURVEY" SURVEY UPDATED BY WINNIE SURVEYING PLLC (A SUCCESSOR TO WINNIE ENGINEERING & SURVEYING PLLC NOVEMBER 2011 AND MARCH/AUGUST 2012.
 - GEOTECHNICAL BORING/TEST LOCATIONS SHOWN ON THIS PLAN WERE TAKEN FROM THE GEOTECHNICAL REPORT ENTITLED, "SOILS AND FOUNDATION INVESTIGATION REPORT" DATED, JUNE, 26/2012, PREPARED BY MUECK-TOLLY AND ASSOCIATES, P.C.

ACCOMMODATION NUMBER	SYMBOL	SIZE	DESCRIPTION	MOUNTING TYPE	MOUNTING HEIGHT	REGULATORY REFERENCE
A	STOP	30"x30"	WHITE ON RED	STEEL CHANNEL	7'-0"	R1-1 X
B	YIELD	12"x18"	GREEN & BLUE ON WHITE	STEEL CHANNEL	7'-0"	R7-8 X
C	TURN	24"x30"	BLACK ON WHITE	STEEL CHANNEL	7'-0"	R4-7 X



COPYRIGHT © 2012 By John Meyer Consulting
 NOT FOR CONSTRUCTION

DATE	BY

PARKE LANE AT NEWBURGH, LLC
 54 HORSE HILL ROAD, SUITE 201
 CEDAR KNOLLS, NJ 07927
 THOMAS J. BRENNAN, ARCHITECTS
 4011 PLAN PARKWAY - SUITE 100
 PLANO, TEXAS

120 Bedford Road
 Armonk, NY 10504
 voice 914.273.5225 • fax 914.273.2102
 www.johnmeyerconsulting.com

LAYOUT PLAN
 (PRELIMINARY SITE PLAN/SUBDIVISION REVIEW)
 PARKE LANE AT NEWBURGH
 STEWART AVENUE
 TOWN OF NEWBURGH, NEW YORK

DATE	BY	APPROVED	JS
07/12/2012			
10146-SITE	SITE PLAN	LAYOUT PLAN	