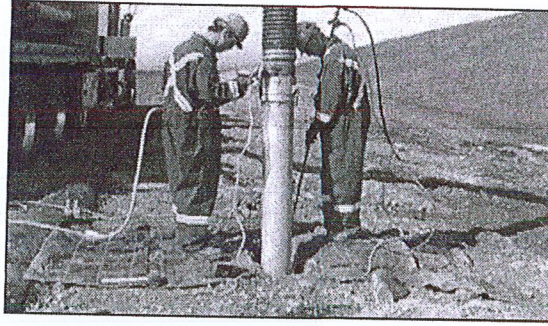


Water Use Calculation

If we use 1500 Gallons as average per truck, 4 Trucks filling up 5 days week by 52 weeks year.



Hydro based digging is faster in a wide variety of soil conditions and more can be held in the vacuum tank than in air excavation. Wet soil cannot be returned until it is dried, though, comparatively, air excavated soil can be used as fill. Air excavation does not dig as well as hydro excavation.

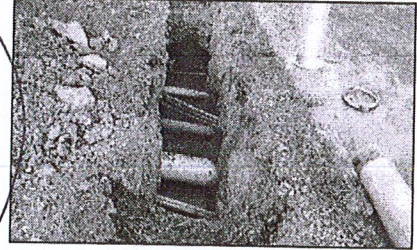
1,560,000 gallons year on the well.

* Large Hydravacs can carry 1,000-2,000 Gallons based on size.

Average home uses 300 gallons per day or 109,500 per year.

Hydro excavation trucks can be used for:

- Debris removal and general cleanups
- Slot trenching and excavating
- Directional drilling test holes
- Potholing or Daylighting
- Service and splice pits
- Pipeline and utility crossings
- Waterline repair
- Sign and pole installation
- Valve box cleaning



Hydro Excavation Daylighting

NOTHING MENTIONS TANK LINING AS A USE.

$$\frac{1,560,000}{109,500}$$

Industry Applications:

- Pipelines
- Storm Drains
- Public Works
- Refineries
- Road Construction
- Telecommunications
- Utility Engineering
- Power Plants
- Commercial Construction
- Municipal Utilities
- Electrical Utilities



Hydro Excavation in the Oil Industry

14.25 houses is equivalent water usage.

So that is like having 14 houses on that 6 acres.

HUGE IMPACT

Hydro excavation is gaining recognition as best practices for exposing underground utilities in frozen and or congested grounds. Governments are enacting laws that will drive contractors to use hydro excavation as a best practice method to prevent damage to underground infrastructure.

AdChoices

EQUIPMENT USED

HYDRO VACUUM EXCAVATION

EXCAVATION ROCK

Vacuum Truck Exchange > Vacuum Excavation > Hydro Excavation