

Full Size Site Plans

are available for viewing at the

**Zoning Board of Appeals**

Office located at

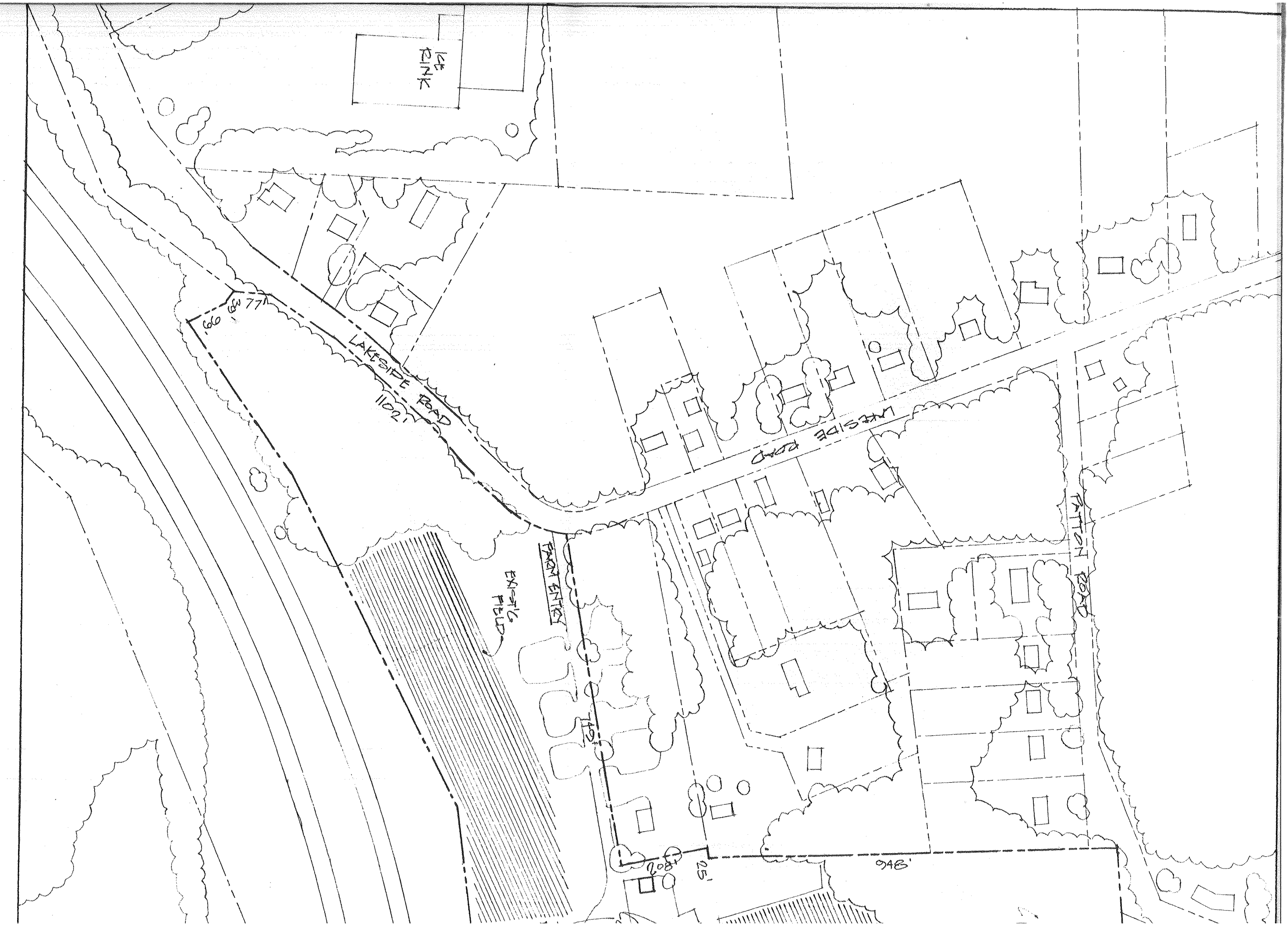
**308 Gardnertown Road**

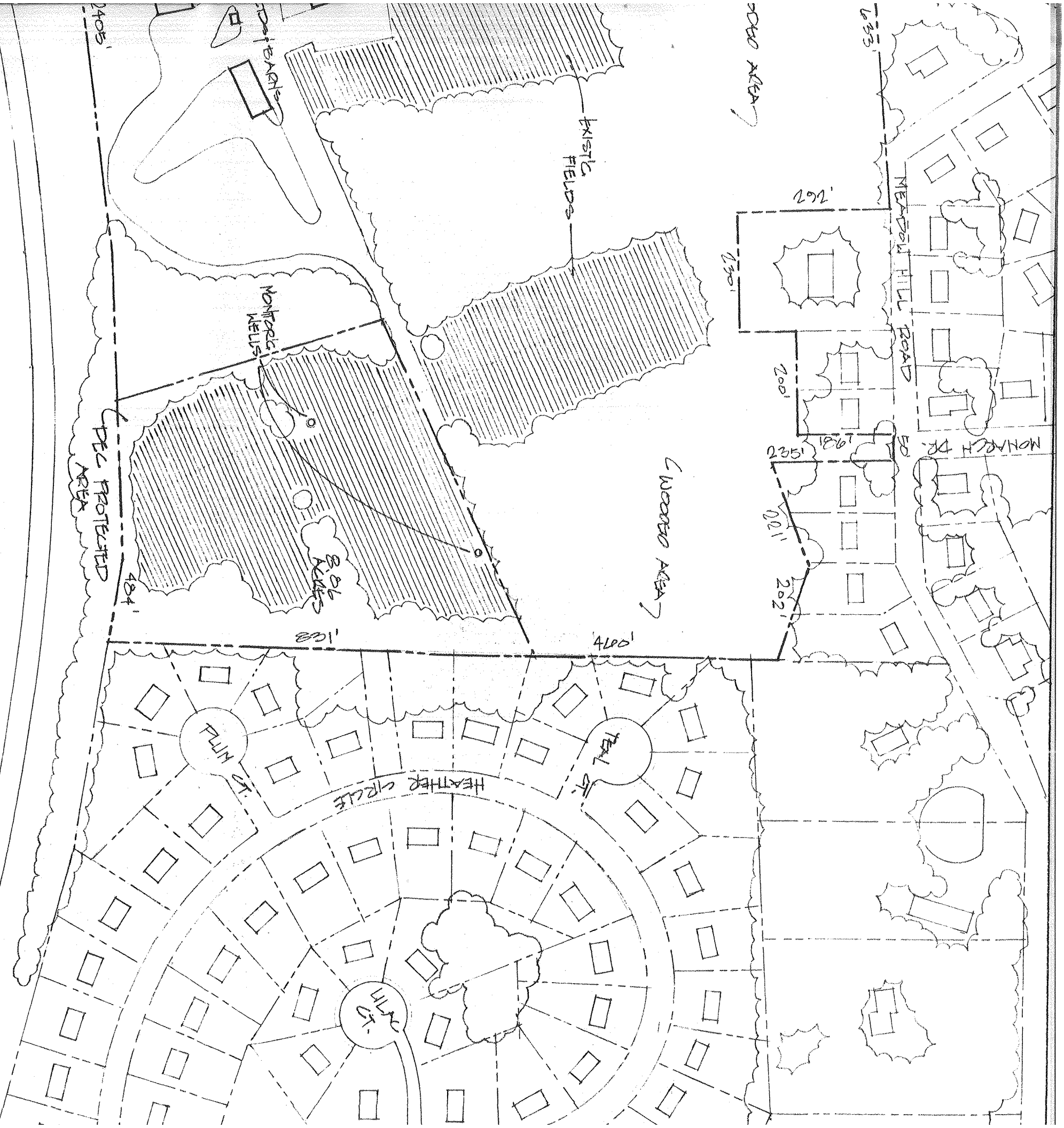
Newburgh, NY

845-566-4901

JEFFREY LEASE  
ARCHITECT  
5200 RT 9W, NEWBURGH, NY 12550

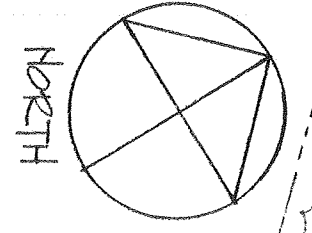
DARREN GO SOLLAR FARK  
84 LAKESIDE ROAD, NEWBURGH, NY  
981-86-1-96





INTERSTATE 84

NOTES  
 ENTIRE FARM IS 89.8 ACRES TOTAL  
 P.C. PROTECTED SITE IS 8.86 ACRES



REVISIONS	DATE	NO.	DESCRIPTION

2550

EXISTING FARM  
 AND NEIGHBORING PROPERTY  
 SCALE: 1" = 200' D.

SITE-  
 8 JAN '11

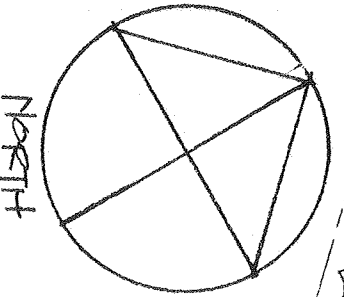
STREET LEASE  
ARCHITECT (845.542.0345)  
20 FT SUNBURGH NY 12550

PARCEL SOLAR FARM  
84 LAKE SIDE ROAD, NEWBURGH, NY  
931-871-1-91





Notes  
ENTIRE FARM IS 59.8 ACRES TOTAL  
DEC PROTECTED SITE IS 8.81 ACRES  
SOLAR DEVELOPMENT IS APPROX. 40 ACRES  
SOLAR PANEL HEIGHT NOT TO EXCEED 91.0'  
SOLAR PANELS ARE 100' FROM PROPERTY  
LINE WITH A 50' LAND SCAPED BUFFER



REVISIONS

DATE	NO	DESCRIPTION

SOLAR FARM

SHOWN ON INTERIOR FIELDS

SCALE: 1" = 200'

SITE-1

2 JAN 11

1550